

MABERLEY ROAD, LONDON, SE19  
**£1,650 PER MONTH PART FURNISHED**

## A NEWLY REFURBISHED TWO-BEDROOM FLAT ON ONE OF CRYSTAL PALACE'S PREMIER ROADS

Crystal Palace | 02038693222 | [crystalpalace@winkworth.co.uk](mailto:crystalpalace@winkworth.co.uk)

Tenant Fees Apply: Details of fees for tenant referencing, tenancy agreement admin fees and renewal fees are available on the Winkworth website and the link can be found with the displayed rent for the property. Tenants should ensure they are fully conversant with these upfront fees and other costs that are involved at the outset of the tenancy before making an offer to rent and your local Winkworth office will provide written details upon request.

[winkworth.co.uk](http://winkworth.co.uk)

**Winkworth**

for every step...



### **DESCRIPTION:**

Situated on the first floor of an imposing Victorian, semi-detached house. The property comprises; two double bedrooms, reception room, kitchen and shower room. The property, which has recently been refurbished, is a fantastic opportunity for a professional couple or sharers alike.

The flat is in close proximity to 'South Norwood Lake', a hugely popular park for exercising and recreation. The location is a short walk away from the vibrant shops, entertainment and transport links close to Crystal Palace Triangle.

Council Tax Band - C

Holding Deposit - £403.84 (1 Week's Rent)

Security Deposit - £1,903.80 (5 Week's Rent)

**Winkworth**

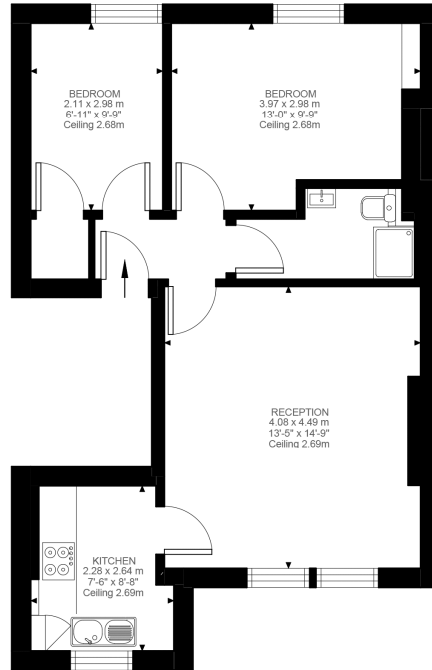
for every step...





**Winkworth**

for every step...

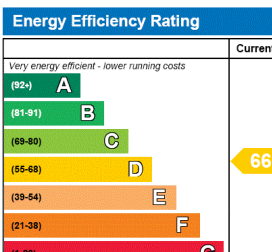


First Floor  
539 ft<sup>2</sup>

Maberley Road, SE19  
Approximate Gross Internal Area  
50.09 SQ.M / 539 SQ.FT

Illustration for identification purposes only. Not to scale.  
Floor Plan Drawn According To RICS Guidelines.

This floorplan is for illustration purposes only and is not to scale. The position and size of doors, windows, appliances and other features are approximate.



Crystal Palace | 02038693222 | crystalpalace@winkworth.co.uk



for every step...

winkworth.co.uk

Winkworth wishes to inform prospective buyers and tenants that these particulars are a guide and act as information only. All our details are given in good faith and believed to be correct at the time of printing but they don't form part of an offer or contract. No Winkworth employee has authority to make or give any representation or warranty in relation to this property. All fixtures and fittings, whether fitted or not are deemed removable by the vendor unless stated otherwise and room sizes are measured between internal wall surfaces, including furnishings.