



**UNDERCLIFF, BLACKHEATH HILL, GREENWICH, LONDON, SE10
£375,000 SHARE OF FREEHOLD**

**WE ARE PLEASED TO OFFER THIS THREE
BEDROOM, SPLIT LEVEL, FLAT THAT MEASURES
CIRCA 871 SQ FT. FEATURING OFF STREET
PARKING, COMMUNAL GROUNDS AND LOCATED
JUST MOMENT FROM THE OPEN HEATH!**

Greenwich | 02030533033 | greenwich@winkworth.co.uk

Winkworth

winkworth.co.uk

See things differently



DESCRIPTION:

We are pleased to offer this three bedroom, split level, flat that measures circa 871 sq ft. Featuring off street parking, communal grounds and located just moment from the open heath!

It's worth mentioning that the property will require a full refurbishment. Found on the 2nd and 3rd floors, and accessed to the rear of the block, the property comprises a 12ft kitchen breakfast room and a 17ft reception room that leads onto a small balcony. Upstairs there are three bedrooms, a family bathroom and a separate WC. The parking is accessed through a security gate, just off Maidenstone Hill.

Undercliff is a popular block positioned on the corner of Blackheath Hill and Maidenstone Hill. As mentioned, it is just a few minutes walk to the heath, but also close to the gates of The Royal Park. Greenwich town centre is also nearby, which offers a great selection of shops and restaurants, along with mainline rail, DLR and riverboat service. No chain!

AT A GLANCE

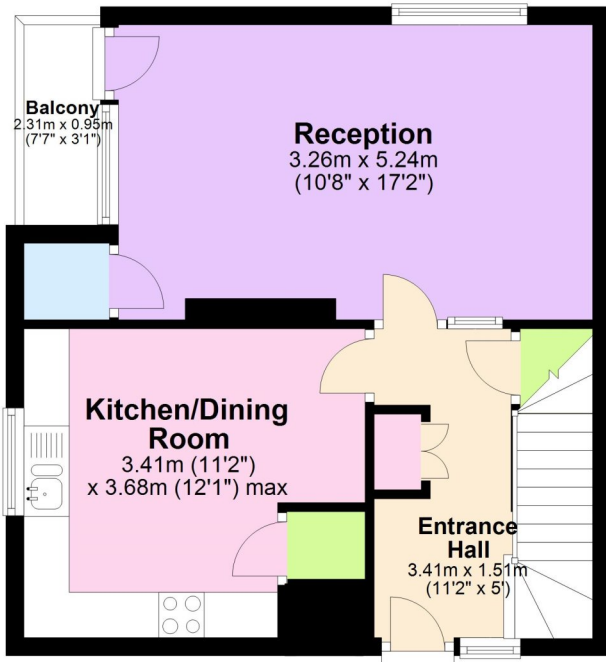
- split level flat
- 2nd and 3rd floors
- three bedrooms
- requires updating
- off street parking
- communal grounds
- circa 871 sq ft
- 17ft reception with balcony
- kitchen breakfast room
- moment from open heath





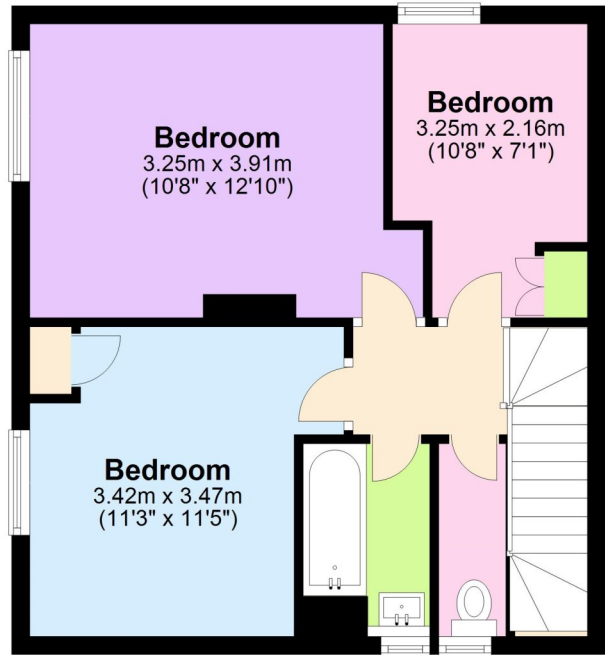
Second Floor

Approx. 39.3 sq. metres (422.8 sq. feet)



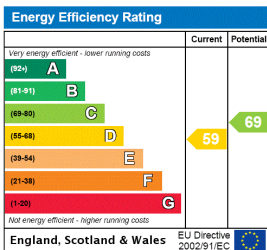
Third Floor

Approx. 41.7 sq. metres (449.3 sq. feet)



Total area: approx. 81.0 sq. metres (872.1 sq. feet)

This floorplan is for illustration purposes only and is not to scale. The position and size of doors, windows, appliances and other features are approximate.



Greenwich | 02030533033 | greenwich@winkworth.co.uk

Winkworth

winkworth.co.uk

See things differently

Winkworth wishes to inform prospective buyers and tenants that these particulars are a guide and act as information only. All our details are given in good faith and believed to be correct at the time of printing but they don't form part of an offer or contract. No Winkworth employee has authority to make or give any representation or warranty in relation to this property. All fixtures and fittings, whether fitted or not are deemed removable by the vendor unless stated otherwise and room sizes are measured between internal wall surfaces, including furnishings.