



Crown Heights

Basingstoke RG21 7TR

Description

This two double bedroom apartment has a balcony and one parking space and is ideally situated close to Basingstoke's mainline railway station and the Festival Place shopping and leisure centre.

Situated on the third floor the property offers an open plan kitchen/living area with a door to the balcony.

There are two double bedrooms, one of which has an en-suite.

There is also one allocated underground parking space.



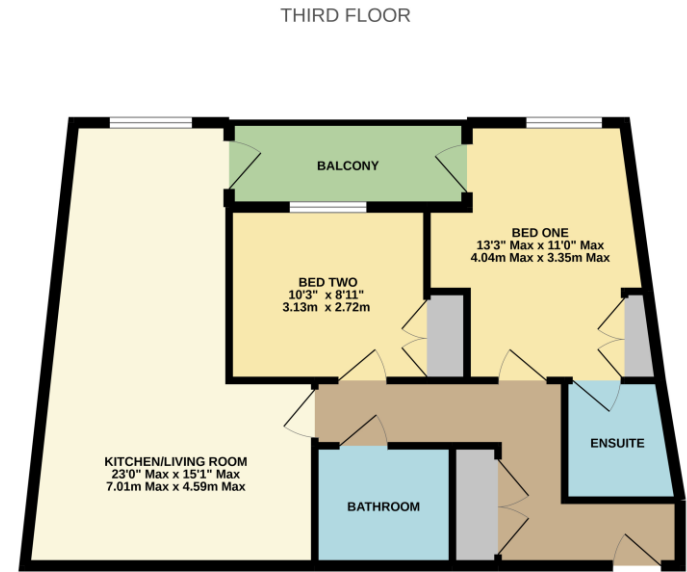
Winkworth

Accommodation

Hallway
 Kitchen/living area
 Two bedrooms
 En-suite
 Family bathroom
 Balcony
 One allocated parking space
 Unfurnished

Under the Property Misdescriptions Act 1991, these Particulars are a guide and act as information only. All details are given in good faith and are believed to be correct at time of printing. Winkworth give no representation as to their accuracy and potential purchasers or tenants must satisfy themselves by inspection or otherwise as to their correctness. No employee of Winkworth has authority to make or give any representation or warranty in relation to this property.

Energy Efficiency Rating		Current	Potential
Very energy efficient - lower running costs			
(92-100) A			
(81-91) B			
(69-80) C			
(55-68) D			
(39-54) E			
(21-38) F			
(1-20) G			
Not energy efficient - higher running costs			
England, Scotland & Wales		EU Directive 2002/91/EC	



Winkworth Energy Rating has been made to ensure the accuracy of the Register (national base, measurements of doors, windows, rooms and any other items are appropriate and no responsibility is taken for any error, omission or mis-statement. The data is for guidance purposes only and should be used as such by any prospective purchaser. The services, systems and appliances shown have not been tested and no guarantee as to their operability or efficiency can be given. Made with Aaregon 10/2022



Basingstoke Office

10B Church Street, Basingstoke, Hampshire, RG21 7QE
 01256 811730 | basingstoke@winkworth.co.uk
winkworth.co.uk/Basingstoke



See things differently.