



## Netherwood Road, London, W14

£500,000 Share of Freehold

A superb two bedroom flat on the raised ground floor of a mid-terrace Victorian house.

Reception room | Kitchen | 2 Bedrooms | Bathroom | 482 Sq Ft / 44.8 Sq M | Council Tax Band D | EPC Rating Band D

**Winkworth**

*winkworth.co.uk*

for every step...





## LOCATION

The property is situated midway along Netherwood Road, ideal for the numerous amenities on offer in Brook Green, which include some superb pubs and restaurants. A further range are available at Westfield London, Kensington High Street and Hammersmith, all being within easy reach. The closest Underground stations are located at Hammersmith and Shepherds Bush, where London Overground services are also on offer.

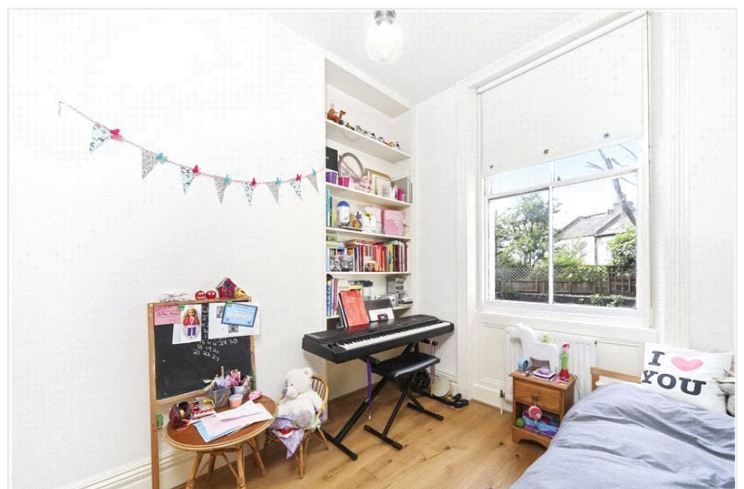
## DESCRIPTION

Well presented throughout, the property offers accommodation comprising of entrance hall, reception room with open plan kitchen, two bedrooms and shower room.

Share of Freehold with an underlying lease of 999 years from 1 July 2003

Service Charge:- £2,400 p.a

Ground Rent:- N/A

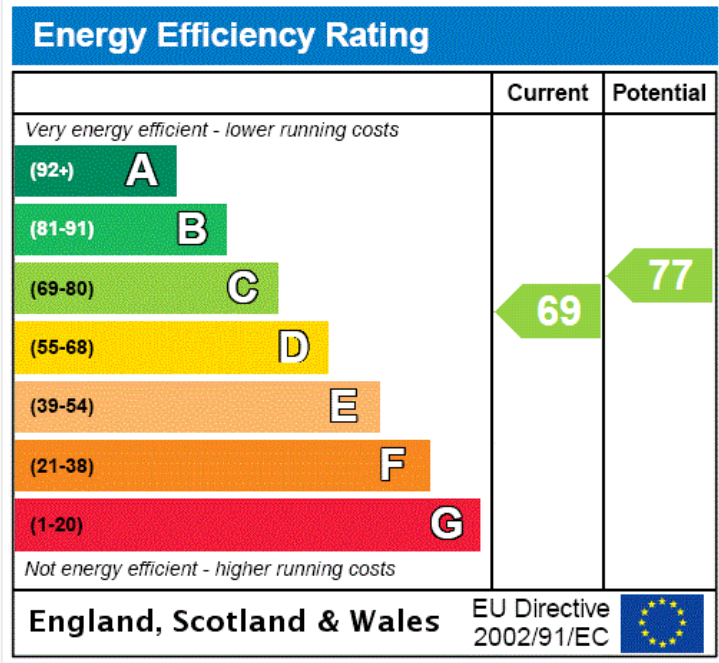




**LOCAL AUTHORITY**  
Hammersmith & Fulham

**TENURE**  
Share of Freehold 976 years 10 months.

**PRICE:** £500,000 Share of Freehold

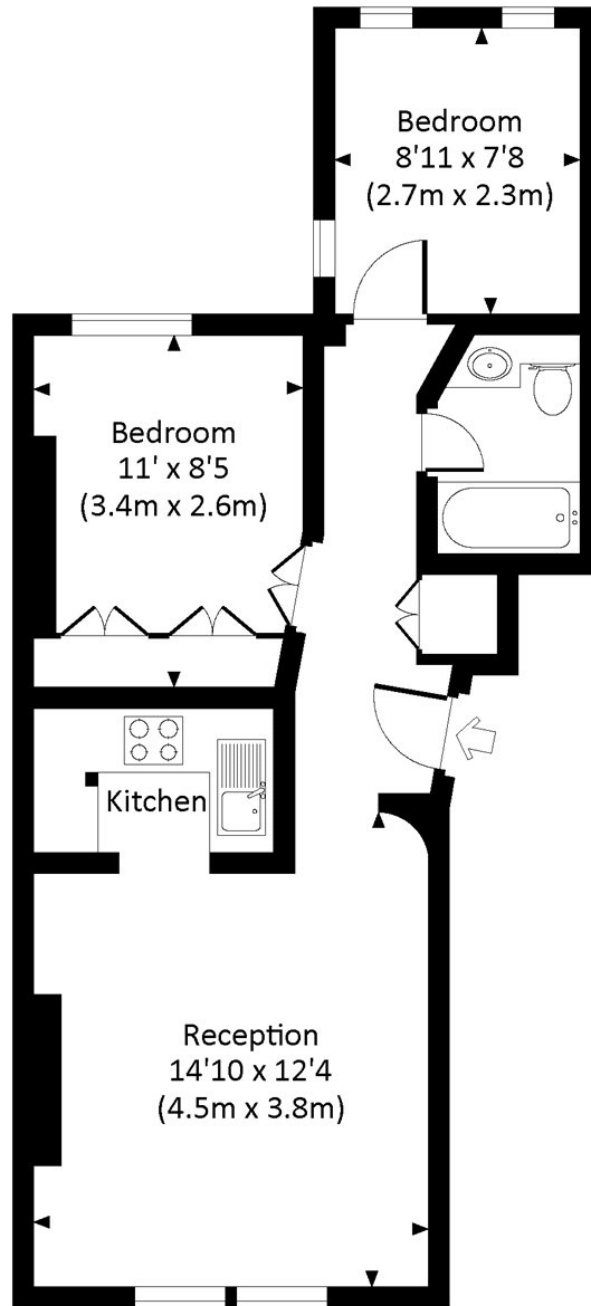




## NETHERWOOD ROAD, W14

Approx. gross internal area

482 Sq Ft. / 44.8 Sq M.



### RAISED GROUND FLOOR



All measurements have been made in accordance with RICS Code of Measuring Practice which are approximate only and only for illustrative purposes. For the avoidance of doubt, Dowling Jones Design shall not be liable for any reliance on these measurements. © 2017 www.dowlingjones.com 020 7610 9933

The displayed square footage is taken from the floor plans with measurements created using the Royal Institute of Chartered Surveyors' Code of Practice for Measuring. These measurements are approximate and included for illustrative purposes only. Winkworth does not make any representation as to the accuracy of these measurements and you should seek to verify them for yourself. Winkworth accept no liability for any loss you may suffer if you rely on these measurements.

Hammersmith | 0207 371 4466 | [hammersmith@winkworth.co.uk](mailto:hammersmith@winkworth.co.uk)

# Winkworth

for every step...

Under the Property Misdescriptions Act 1991, these Particulars are a guide and act as information only. All details are given in good faith and are believed to be correct at time of printing. Winkworth give no representation as to their accuracy and potential purchasers or tenants must satisfy themselves by inspection or otherwise as to their correctness. No employee of Winkworth has authority to make or give any representation or warranty in relation to this property.