

BELSIZE SQUARE, NW3 £2,500 PER MONTH UNFURNISHED

A beautifully presented bright and contemporary one bedroom apartment set on the first floor of this traditional white stucco fronted building in the heart of Belsize Park. Offering a large open plan kitchen living room with wood flooring and, double bedroom with built in storage, bathroom.

Belsize Square is ideally located for both the Northern line at Belsize Park and Jubilee line service from Swiss Cottage.

Double Bedroom with Build in Storage | Large Open Plan Kitchen / Reception | Bathroom

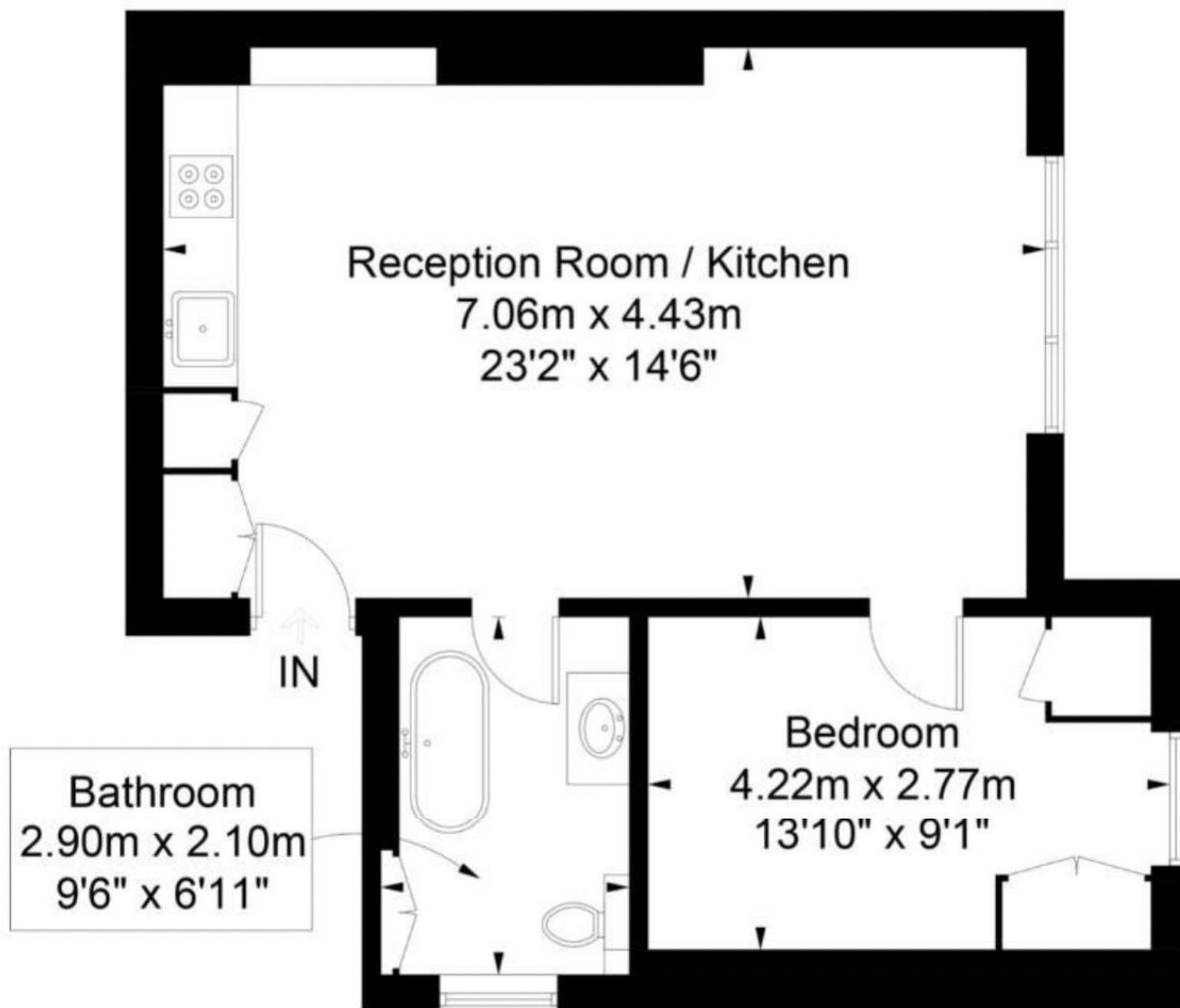
Winkworth

for every step...



Belsize Square

Approximate Gross Internal Area = 49.7 sq m / 529 sq ft



First Floor

Illustration for identification purposes only, measurements are approximate,
not to scale. FloorplansUsketch.com © 2017 (ID397286)
ELLIE CLAIRE PHOTOGRAPHY LTD

Score	Energy rating	Current	Potential
92+	A		
81-91	B		
69-80	C	71 C	79 C
55-68	D		
39-54	E		
21-38	F		
1-20	G		

Tenancy Deposit: £2,884.62

Holding Deposit: 1 weeks rent where the rent is up to £100,000 per annum, 2 weeks rent where the rent is over £100,000 per annum

Council Tax Band: E

Where no figures are shown, we have been unable to ascertain the information. All figures that are shown were correct at the time of printing.

Where no figures are shown, we have been unable to ascertain the information. All figures that are shown were correct at the time of printing.

These particulars are not an offer or contract, nor part of one. You should not rely on statements by Winkworth in the particulars or by word of mouth or in writing "information" as being factually accurate about the property, its condition or its value. Winkworth does not have any authority to make any representations about the property, and accordingly any information given is entirely without responsibility on the part of the agents, seller(s) or lessor(s). These particulars are prepared on the basis of the information supplied by our client and are a rough guide for information only. The photographs show only certain parts of the property. We are not able to check all of the information and therefore are unable to guarantee accuracy. All interested parties are therefore advised to undertake all necessary inspections and checks that they deem appropriate. Where displayed, the square footage is taken from the floor plans, which are created by an independent supplier. These measurements are approximate and included for illustrative purposes only. The measurements may vary. Winkworth does not make any representation as to the accuracy of these measurements and you should seek to verify them for yourself. Winkworth accept no liability for any loss you may suffer if you rely on these measurements. All fixtures and fittings, whether fitted or not are deemed removable by the vendor unless stated. Any reference to alterations to, or use of, any part of the property does not mean that any necessary planning, building regulations or other consent has been obtained. Amenities and appliances have not been tested

Belsize Park | 161 Haverstock Hill, London, NW3 4QT | I

Winkworth

for every step...