



WINDERMERE ROAD, LONDON, W5
£575,000 LEASEHOLD

EPC: Band C
Council Tax: Band D

Ealing & Acton | 0208 896 0123 | ealing@winkworth.co.uk

Winkworth

for every step...

winkworth.co.uk



DESCRIPTION:

Immaculately presented two bedroom apartment set within a lovely converted period house. The property offers approximately 649 sq ft of accommodation and comprises two bedrooms, modern family bathroom and an open-plan reception room with fully-equipped kitchen. It is offered in very good condition throughout and further benefits from a secluded private garden. Backing onto the popular Lammas Park, the property is located on a quiet residential road, but is also just moments away from the numerous amenities along Northfield Avenue as well as Northfields and South Ealing underground stations.



Winkworth

for every step...



Winkworth

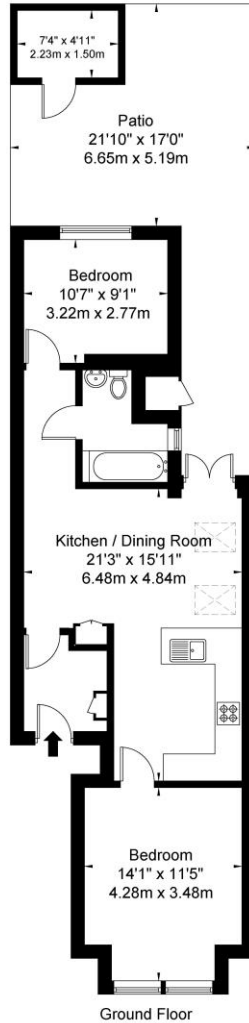
for every step...

Windermere Road W5 4TD

Approx Gross Internal Area = 60.3 sq m / 649 sq ft

Outbuilding = 3.4 sq m / 36 sq ft

Total = 63.7 sq m / 685 sq ft



Ground Floor

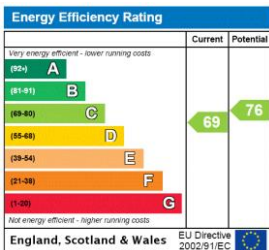
Ref

Copyright

**BLEU
PLAN**

The Floor plan is not to scale and measurements and areas shown are approximate and therefore should be used for illustrative purposes only. The plan has been prepared in accordance with the RICS code of Measuring Practice and whilst we have confidence in the information produced it must not be relied on. If there is any aspect of particular importance, you should carry out or commission your own inspection of the property.
Copyright @ BLEUPLAN

This floorplan is for illustration purposes only and is not to scale. The position and size of doors, windows, appliances and other features are approximate.



Ealing & Acton | 0208 896 0123 | ealing@winkworth.co.uk



for every step...

winkworth.co.uk

Winkworth wishes to inform prospective buyers and tenants that these particulars are a guide and act as information only. All our details are given in good faith and believed to be correct at the time of printing but they don't form part of an offer or contract. No Winkworth employee has authority to make or give any representation or warranty in relation to this property. All fixtures and fittings, whether fitted or not are deemed removable by the vendor unless stated otherwise and room sizes are measured between internal wall surfaces, including furnishings.