



Golf Links Road

Ferndown, BH22 8BT

Guide Price £1,650,000

Winkworth



GUIDE PRICE £1,650,000 FREEHOLD

This imposing four/five double bedroom, three reception room, three bathroom detached house is approached via gates and sits proudly on a secluded and rarely available plot with direct access onto Ferndown Championship Golf Course.

Positioned on arguably Ferndown's most sought-after road, this much loved 3300 sq ft home is immaculate throughout with incredible views from the garden across the course and a versatile layout that will suit a range of buyers needs.

The property has been very well maintained throughout and further benefits from a double garage with electric door and off road parking for multiple vehicles.

Four/Five Double Bedrooms
Gated Driveway For Several Vehicles
Three Bathrooms
Heated Conservatory
Direct Access Onto Ferndown Golf Course
Sought After Location
Double Garage
En-suite Bedroom
Versatile Layout
Lots Of Reception Space
Stunning Garden

EPC C | Council Tax Band G

01202 434365
ferndown@winkworth.co.uk





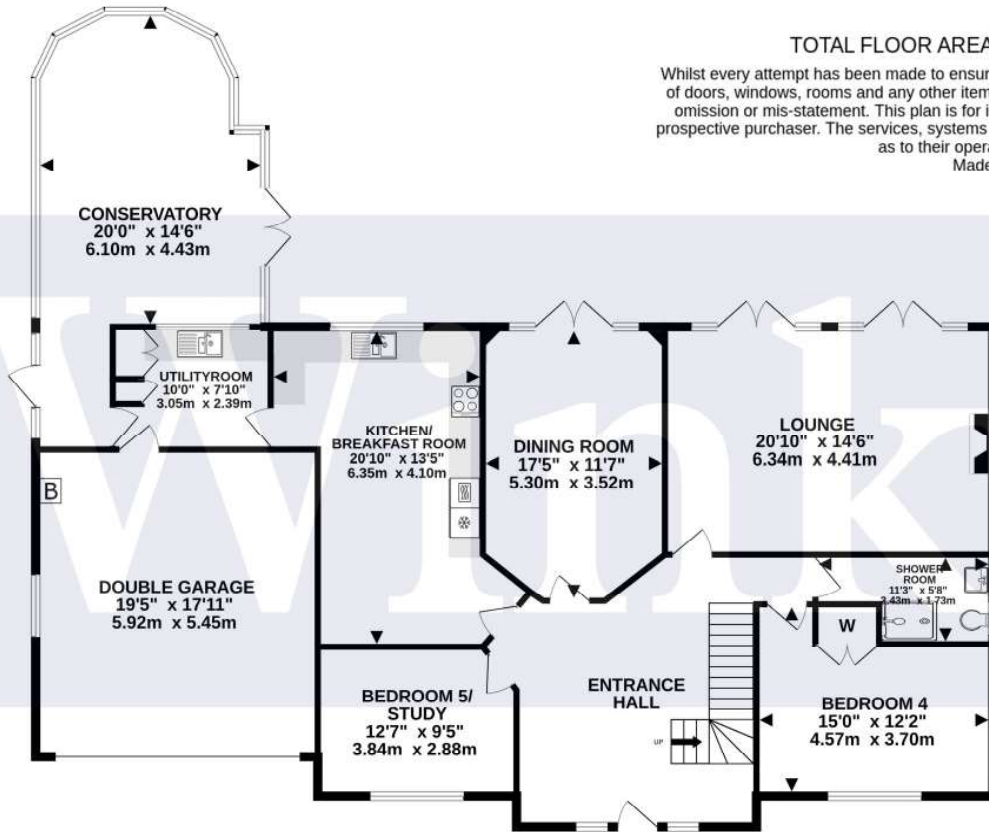




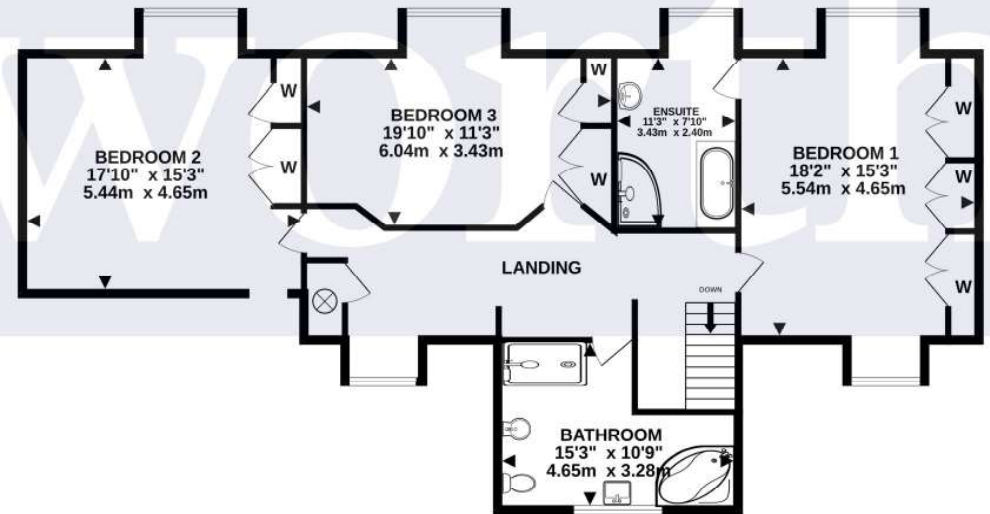
TOTAL FLOOR AREA : 3352 sq.ft. (311.4 sq.m.) approx.

Whilst every attempt has been made to ensure the accuracy of the floorplan contained here, measurements of doors, windows, rooms and any other items are approximate and no responsibility is taken for any error, omission or mis-statement. This plan is for illustrative purposes only and should be used as such by any prospective purchaser. The services, systems and appliances shown have not been tested and no guarantee as to their operability or efficiency can be given.

Made with Metropix ©2024



GROUND FLOOR
2049 sq.ft. (190.3 sq.m.) approx.



1ST FLOOR
1304 sq.ft. (121.1 sq.m.) approx.



LOCATION

Golf Links Road is a particularly sought after location, conveniently close to Ferndown town centre which has a range of amenities including an M&S Foodhall, independent Cafés, and restaurants. Within catchment for Ferndown Schools and walking distance of Ferndown Championship Golf Course which is located approx 500 metres away. There are bus routes within a short walk giving you easy access to Bournemouth, Wimborne and Poole, all of which have an excellent range of shops, bars, restaurants and leisure facilities. Award winning sandy beaches are just twenty minutes away and the A31 provides quick access to the New Forest, Southampton, London and beyond.

Winkworth Ferndown

406 Ringwood Road, Ferndown, Dorset, BH22 9AU

01202 434365 | ferndown@winkworth.co.uk

winkworth.co.uk/ferndown

Winkworth