



AMERLAND ROAD, SW18
£1,450,000 FREEHOLD

Winkworth



Situated on a peaceful, tree-lined residential street that is highly sought after by young families, this substantial six-bedroom terraced house offers 1,841 sq ft of living space and charming period character throughout.

The property features a generous double reception room with traditional fireplaces, original wood flooring, timeless ceiling cornicing, and high ceilings throughout- All contributing to its classic appeal. The accommodation is further complemented by an eat-in kitchen, two bathrooms, a sunny private garden, and a large cellar offering excellent storage.

Located a short walk from East Putney Station (District Line), the home enjoys convenient access to Southside Shopping Centre, King George's Park, and a variety of local cafés, shops, and amenities.

Additional benefits include residents' parking and freehold tenure, making this an exceptional opportunity for those seeking a characterful and well-connected family home in South West London.



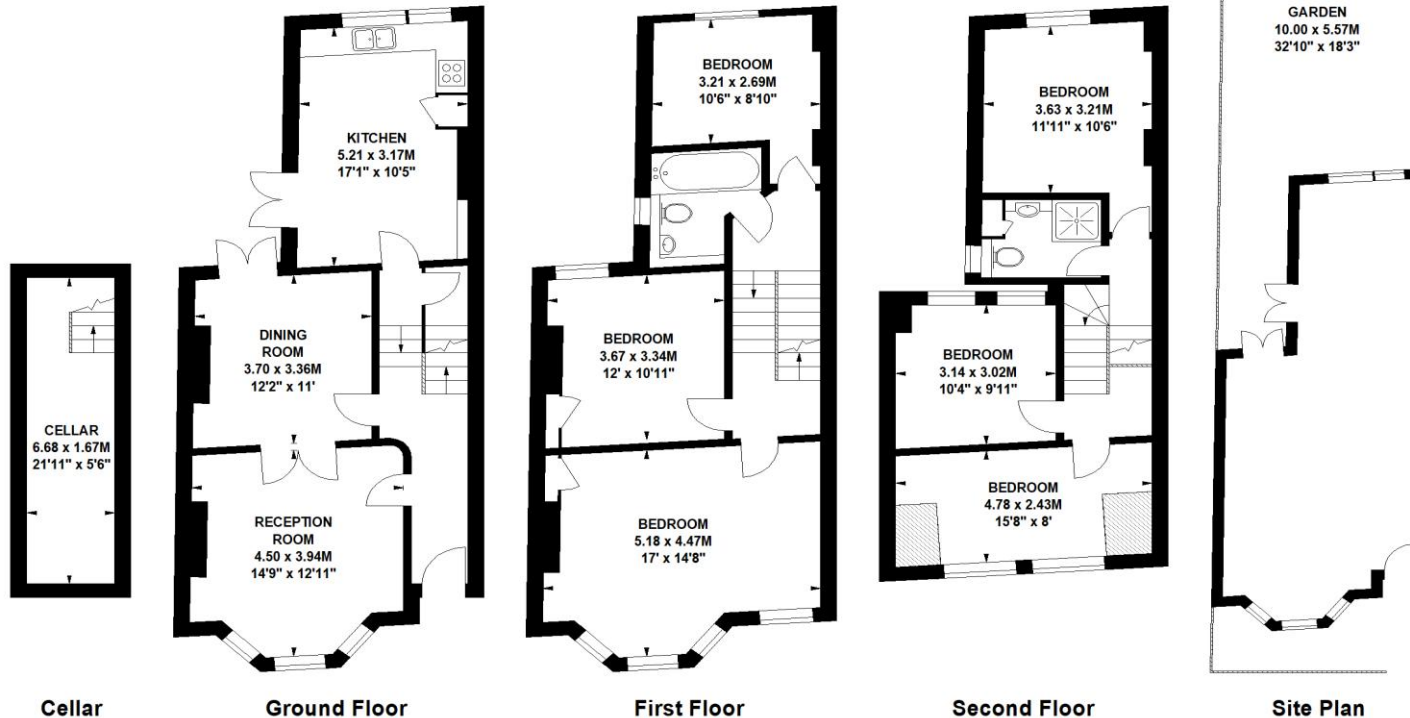




Amerland Road, SW18

Approximate Gross Internal Area 171 sq.m / 1841 sq. ft

 Under 1.5m head height



Winkworth
020 8788 9295

Floor Plan produced by Mays Floorplans©
Illustration for identification purposes only, not to scale
All measurements are maximum, and include wardrobes and window bays where applicable

Southfields | 020 8877 1000 | southfields@winkworth.co.uk

winkworth.co.uk

Winkworth wishes to inform prospective buyers and tenants that these particulars are a guide and act as information only. All our details are given in good faith and believed to be correct at the time of printing but they don't form part of an offer or contract. No Winkworth employee has authority to make or give any representation or warranty in relation to this property. All fixtures and fittings, whether fitted or not are deemed removable by the vendor unless stated otherwise and room sizes are measured between internal wall surfaces, including furnishings.

Winkworth