



Elm Park Gardens, West Chelsea, London, SW10

£807.69 per week* / £3,500 per month – Unfurnished

A charming two double bedroom flat located on the second floor (with lift) of this period building.

2 Bedrooms | 1 Reception Room | 1 Bathroom | Second Floor Flat | Lift | Access to Communal Gardens (by separate arrangement) | 839 Approx sq ft | EPC: D

APPLICANT FEES MAY BE APPLICABLE
DEPOSIT OF 5 WEEKS' RENT
HOLDING DEPOSIT OF 1 WEEK'S RENT

Winkworth

winkworth.co.uk

for every step...



DESCRIPTION

A charming two double bedroom flat located on the second floor (with lift) of this period building. The flat comprises an open-plan kitchen/reception room, eat-in kitchen, large bathroom with separate washer/dryer, guest loo, and two good sized double bedrooms with good storage. The property is available now on an unfurnished basis. Heating is also included in the rent.



ACCOMMODATION

2 Bedrooms, 1 Reception Room,
1 Bathroom, Second Floor Flat, Lift,
Access to Communal Garden (by
separate arrangement), Unfurnished,
839 Approx Sq ft

COUNCIL TAX BAND

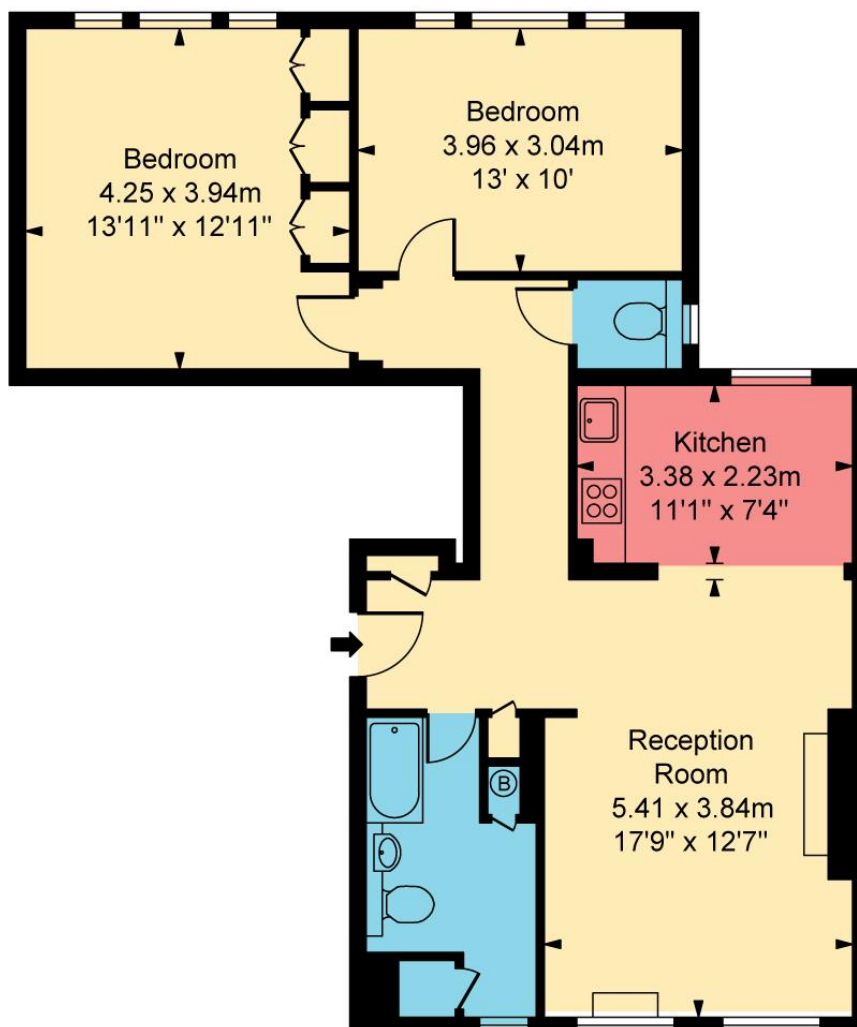
Band G



Energy Efficiency Rating		
	Current	Potential
Very energy efficient - lower running costs		
(92+) A		
(81-91) B		
(69-80) C		80
(55-68) D	59	
(39-54) E		
(21-38) F		
(1-20) G		
Not energy efficient - higher running costs		
England, Scotland & Wales	EU Directive 2002/91/EC	



Elm Park Gardens, SW7
Approximate Gross Internal Area
77.91 sq m / 839 sq ft



Second
Floor

ILLUSTRATION FOR IDENTIFICATION PURPOSES ONLY

ALL MEASUREMENTS ARE MAXIMUM, AND INCLUDE WINDOW BAYS AND WARDROBES WHERE APPLICABLE
THIS PLAN MUST NOT BE REPRODUCED BY ANY OTHER PERSON WITHOUT PERMISSION.

This floorplan is for illustration purposes only and is not to scale. The position and size of doors, windows, appliances and other features are approximate.

**Please note, the rent cannot be paid on a weekly basis*

South Kensington Lettings | 020 7370 6767 | lettings.southken@winkworth.co.uk

winkworth.co.uk

Winkworth

for every step...

Winkworth wishes to inform prospective buyers and tenants that these particulars are a guide and act as information only. All our details are given in good faith and believed to be correct at the time of printing but they don't form part of an offer or contract. No Winkworth employee has authority to make or give any representation or warranty in relation to this property. All fixtures and fittings, whether fitted or not are deemed removable by the vendor unless stated otherwise and room sizes are measured between internal wall surfaces, including furnishings.