



WOOD CLOSE, KINGSBURY, LONDON, NW9
£575,000 FREEHOLD

LOVELY THREE BEDROOM END OF TERRACE HOUSE

Kingsbury | 020 8204 0000 | kingsbury@winkworth.co.uk

Winkworth

for every step...

winkworth.co.uk



Welcome to this charming three-bedroom end of terrace house, perfect for families and those seeking a comfortable and convenient lifestyle. This delightful home offers an inviting reception room, ideal for relaxation and entertaining guests. The well-appointed kitchen/dining area is designed with both functionality and style in mind, providing ample space for family meals and culinary adventures. The ground floor also features a convenient W/C, adding to the practicality of this lovely home. Upstairs, you will find three well-proportioned bedrooms, each offering a peaceful retreat for rest and rejuvenation. The family bathroom ensures comfort and convenience for all family members. One of the standout features of this property is the gorgeous, well-maintained garden. Perfect for outdoor activities, gardening enthusiasts, or simply unwinding in a tranquil setting, this garden is sure to impress. Additionally, this property offers great scope to extend, (STPP), providing an exciting opportunity to customize and expand your living space to suit your needs. Situated in a prime location, this home is close to reputable schools, shops, and a variety of amenities, ensuring all your daily needs are met with ease. Excellent transport links nearby make commuting and traveling a breeze. Don't miss out on the chance to make this wonderful house your new home.

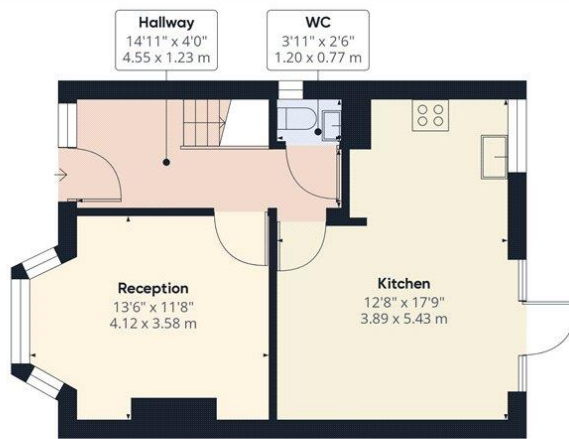


Winkworth

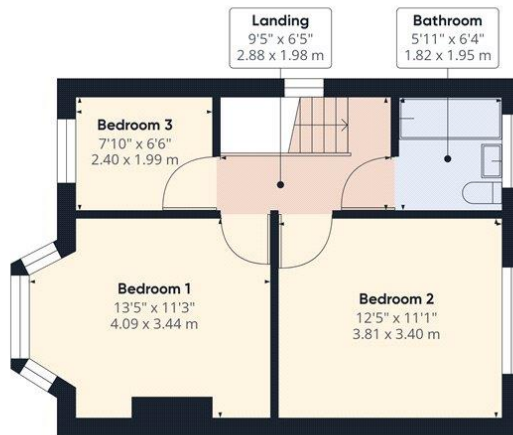
for every step...



Winkworth
for every step...



Ground Floor



Floor 1

Winkworth

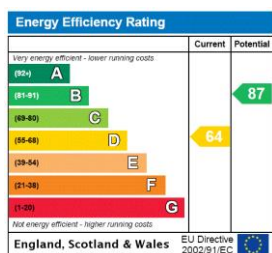
Approximate total area⁽¹⁾
846.95 ft²
78.68 m²

(1) Excluding balconies and terraces

While every attempt has been made to ensure accuracy, all measurements are approximate, not to scale. This floor plan is for illustrative purposes only.

GIRAFFE 360

This floorplan is for illustration purposes only and is not to scale. The position and size of doors, windows, appliances and other features are approximate.



Tenure: Freehold

Council Tax Band: D

Where no figures are shown, we have been unable to ascertain the information. All figures that are shown were correct at the time of printing.

Kingsbury | 020 8204 0000 | kingsbury@winkworth.co.uk

Winkworth

for every step...

winkworth.co.uk

Winkworth wishes to inform prospective buyers and tenants that these particulars are a guide and act as information only. All our details are given in good faith and believed to be correct at the time of printing but they don't form part of an offer or contract. No Winkworth employee has authority to make or give any representation or warranty in relation to this property. All fixtures and fittings, whether fitted or not are deemed removable by the vendor unless stated otherwise and room sizes are measured between internal wall surfaces, including furnishings.