



Bridstow Place, W2

£525 per week (£2,275.00 PCM) *Part Furnished*

1  1  1 

A VERY CHARMING AND SPACIOUS ONE BEDROOM FLAT IN THIS CONVERTED COTTAGE TUCKED AWAY ON A PRETTY COBBLED MEWS JUST BEHIND WESTBOURNE GROVE.



Notting Hill Lettings

0207 727 3227 | nottinghill@winkworth.co.uk

Winkworth

for every step...



The property comprises: Living room, semi open plan fully fitted kitchen with window, double bedroom and bathroom. The Property is offered part furnished.

Bristow Place is a charming cobbled mews just off Chepstow Road and tucked behind Westbourne Grove.

Utilities:

Electricity – Mains

Water – Mains

Sewerage – Mains

Heating – Gas

Broadband <https://checker.ofcom.org.uk/en-gb/broadband-coverage>

Mobile Coverage <https://checker.ofcom.org.uk/en-gb/mobile-coverage>

MATERIAL INFO

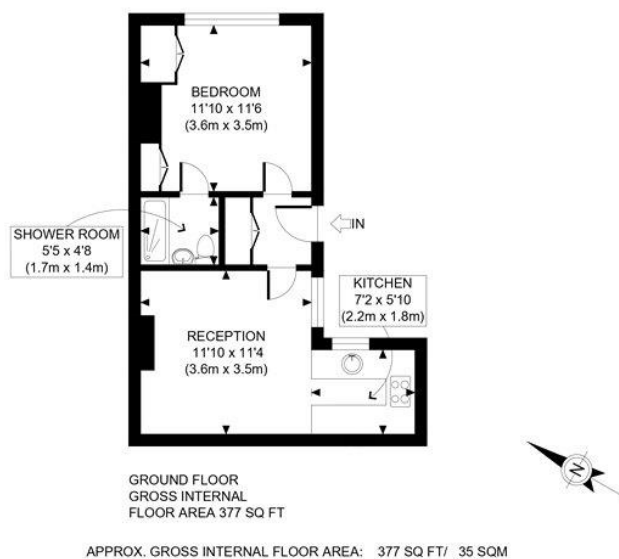
Deposit: £2,625

Holding Deposit: £525

Council Tax Band: C (Westminster)



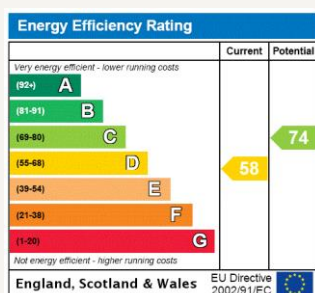




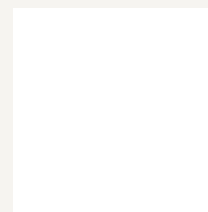
Winkworth

This plan is for illustrative purposes only and should be used as such by any prospective client. Whilst every attempt has been made to ensure the accuracy of the Floor Plan contained here, measurements of the doors, windows, rooms and any other items are approximate and no responsibility is taken for any errors, omissions, or misstatement. The services, systems and appliances shown have not been tested and no guarantee as to the operability or efficiency can be given.

PROPERTY PHOTO PLANS



For more information, scan the QR code or visit the link below



<https://www.winkworth.co.uk/rent/property/NHL130067>

Where no figures are shown, we have been unable to ascertain the information. All figures that are shown were correct at the time of printing.

Notting Hill Lettings

0207 727 3227 | nottinghill@winkworth.co.uk

Winkworth

for every step...

Winkworth wishes to inform prospective buyers and tenants that these particulars are a guide and act as information only. All our details are given in good faith and believed to be correct at the time of printing but they don't form part of an offer or contract. No Winkworth employee has authority to make or give any representation or warranty in relation to this property. All fixtures and fittings, whether fitted or not are deemed removable by the vendor unless stated otherwise and room sizes are measured between internal wall surfaces, including furnishings.