



## 7 Ingledew Close, Heckington, Lincolnshire, NG34 9UN

£159,950 Freehold

**\*NO CHAIN\*** This Two Bedroom Semi-detached home is situated in the popular village of Heckington. The property boasts ample off street parking, a westerly aspected and non overlooked rear garden. The accommodation comprises of Lounge, Kitchen/Diner, Two Bedrooms and a Family Bathroom.

OFF STREET PARKING | WELL PRESENTED THROUGHOUT | KITCHEN/DINER | POPULAR LOCATION | VILLAGE WITH AMENITIES |  
UPVC DOUBLE GLAZING | GAS CENTRAL HEATING



ACCOMMODATION

Lounge - 14'7" x 10'11" (4.45m x 3.33m)

Kitchen/ Diner - 11'1" x 8'1" (3.38m x 2.46m)

Bedroom One - 9'1" x 8'3" (2.77m x 2.51m)

Bedroom Two - 8'3" x 6'2" (2.51m x 1.88m)

Bathroom - 8'3" x 4'11" (2.51m x 1.5m)

LOCAL AUTHORITY

North Kesteven District Council

TENURE

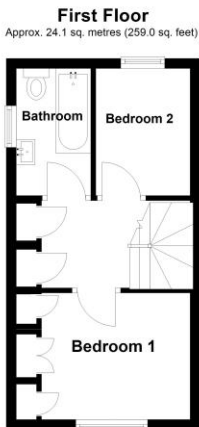
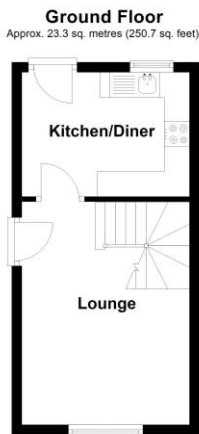
Freehold

COUNCIL TAX BAND

A



Score	Energy rating	Current	Potential
92+	A		
81-91	B		
69-80	C		
55-68	D	65 D	74 C
39-54	E		
21-38	F		
1-20	G		



Total area: approx. 47.4 sq. metres (509.7 sq. feet)

