



GREYSTOKE GARDENS, LONDON, W5
£399,950 SHARE OF FREEHOLD

EPC: Band D
Council Tax: Band D

Ealing & Acton | 0208 896 0123 | ealing@winkworth.co.uk

Winkworth

for every step...

winkworth.co.uk



DESCRIPTION:

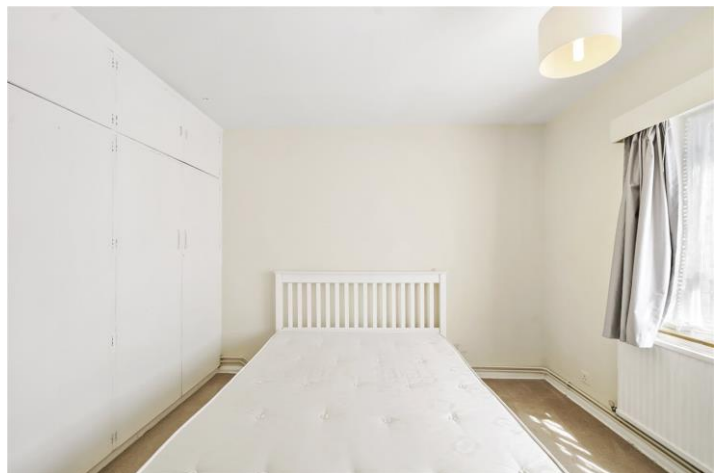
Winkworth are proud to offer this ground floor two bedroom flat in a superb location. The flat comprises of a large bright and airy reception room and separate kitchen, with adjoining utility area. Two well proportioned, dual-aspect double bedrooms are accompanied by an adjacent family bathroom. The property benefits from excellent storage and barrier-controlled off-street parking as well as a private garage and access to communal gardens. Offered with no onward chain.

Greystoke Gardens is ideally located for transport links into London, being just a short walk from both the Central Line station of Hanger Lane and the Piccadilly Line at Park Royal whilst also being perfectly positioned for the North Circular and the A40. The open green space of Hanger Hill Park is also close by.



Winkworth

for every step...

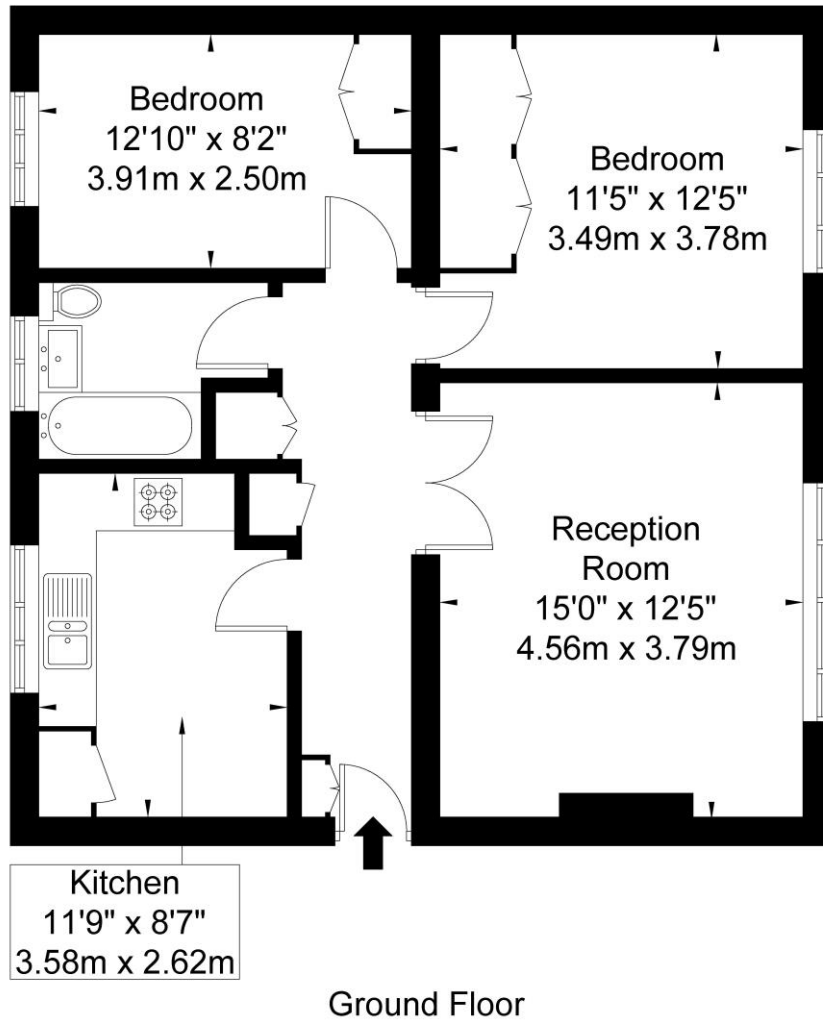
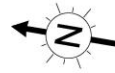


Winkworth

for every step...

Greystoke Gardens W5 1EP

Approx Gross Internal Area = 65.6 sq m / 706 sq ft

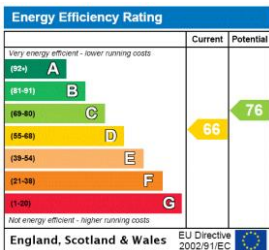


Ref

Copyright **BLEUPLAN**

The Floor plan is not to scale and measurements and areas shown are approximate and therefore should be used for illustrative purposes only. The plan has been prepared in accordance with the RICS code of Measuring Practice and whilst we have confidence in the information produced it must not be relied on. If there is any aspect of particular importance, you should carry out or commission your own inspection of the property.
Copyright @ BLEUPLAN

This floorplan is for illustration purposes only and is not to scale. The position and size of doors, windows, appliances and other features are approximate.



Ealing & Acton | 0208 896 0123 | ealing@winkworth.co.uk



for every step...

winkworth.co.uk

Winkworth wishes to inform prospective buyers and tenants that these particulars are a guide and act as information only. All our details are given in good faith and believed to be correct at the time of printing but they don't form part of an offer or contract. No Winkworth employee has authority to make or give any representation or warranty in relation to this property. All fixtures and fittings, whether fitted or not are deemed removable by the vendor unless stated otherwise and room sizes are measured between internal wall surfaces, including furnishings.