

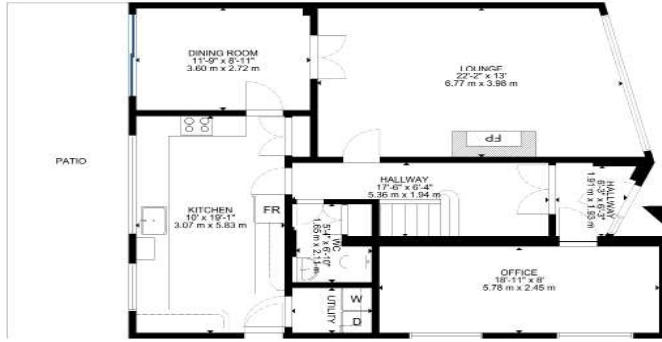


83 Wollaton Road
Ferndown, BH22 8QS
GUIDE PRICE £475,000

Winkworth



83 Wollaton Road



FLOOR 1



FLOOR 2

TOTAL

GROSS INTERNAL AREA
 FLOOR 1 : 95m², 1023 sq.ft. FLOOR 2: 62m², 667 sq.ft.
 EXCLUDED AREAS: PATIO 22m², 238 sq.ft.

TOTAL : 157M², 1689 SQ.FT.
 SIZE AND DIMENSIONS ARE APPROXIMATE, ACTUAL MAY VARY





GUIDE PRICE £475,000

01202 434365 | ferndown@winkworth.co.uk

A WONDERFUL FOUR BEDROOM DETACHED FAMILY HOME POSITIONED ON A SOUTH FACING PLOT IN A QUIET CUL-DE-SAC CLOSE TO LOCAL AMENITIES.

- Driveway For Two/Three Vehicles
- Detached
- Four Bedrooms
- Extended Kitchen With Integrated Dishwasher & Freezer
- Quiet Cul-de-Sac
- Immaculate Throughout
- Spacious Office
- South Facing Garden
- Excellent Extension Potential
- Close To Amenities





LOCATION

Ferndown town centre is easily accessible and has a range of shops, cafes and amenities including an M&S Food Hall. The nearby holmwood nature reserve is perfect for dog walks and exploring the outdoors, the river stour and longham lakes are also close by. There are bus routes nearby giving you easy access to Bournemouth & Poole, both of which have an excellent range of shops and leisure facilities as well as award winning sandy beaches. The nearby A31 provides quick access to the New Forest, Southampton and beyond for the commuter by car.

Winkworth Ferndown

406 Ringwood Road, Ferndown, Dorset, BH22 9AU

01202 434365 | ferndown@winkworth.co.uk

winkworth.co.uk/ferndown

Winkworth