



BURGOS GROVE, GREENWICH, LONDON, SE10
GUIDE PRICE £675,000 - £700,000 FREEHOLD

**WE ARE DELIGHTED TO OFFER THIS SUPERB TWO
 BEDROOM VICTORIAN HOUSE, WHICH MEASURES
 CIRCA 990 SQUARE FOOT AND IS QUIETLY LOCATED
 ON THE ASHBURNHAM TRIANGLE IN WEST**

Greenwich | 02030533033 | greenwich@winkworth.co.uk



DESCRIPTION:

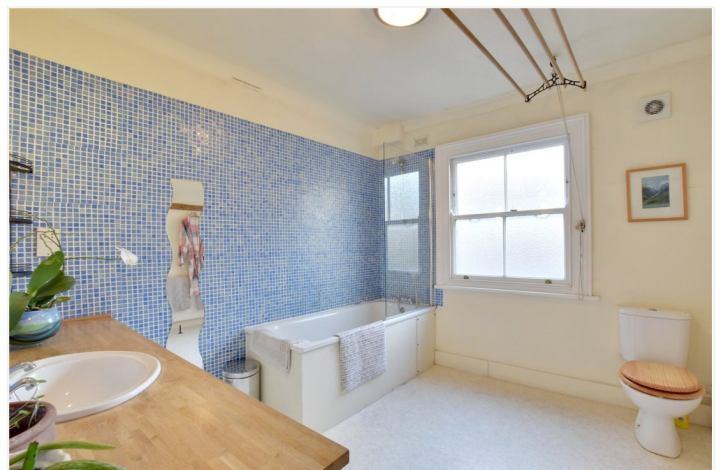
GUIDE PRICE £675,000 - £700,000 We are delighted to offer this superb two bedroom Victorian house, which measures circa 990 square foot and is quietly located on the Ashburnham Triangle in West Greenwich.

Set over three floors the property comprises of a 15ft kitchen breakfast room on the lower ground floor, that leads onto a rear reception. The raised ground floor has a bedroom and further reception. On the first floor is a master bedroom and a large bathroom. To the rear is a south westerly facing paved garden. Whilst we would consider the property to be in good condition, it's certainly worth mentioning that it would benefit from an update.

Burgos Grove is perfectly located just off Greenwich High Road and is just a few moments from mainline rail and DLR. The town centre is also just a short away, which offers a fabulous array of shops and restaurants, along with the Royal Park with its Observatory.

AT A GLANCE

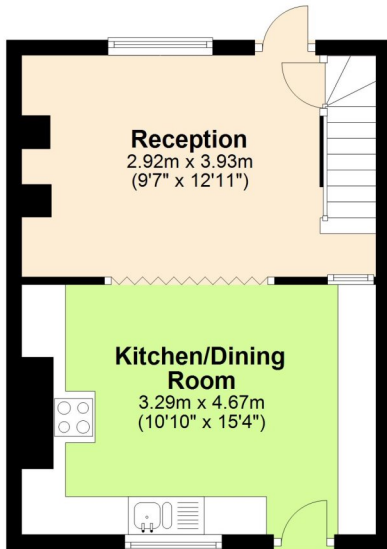
- Victorian house
- two bedroom
- two reception
- three storey
- circa 990 sq ft
- good condition
- south westerly paved garden
- Ashburnham Triangle
- West Greenwich





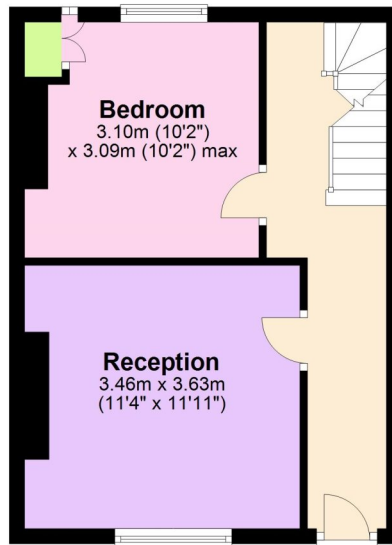
Basement

Approx. 29.5 sq. metres (317.1 sq. feet)



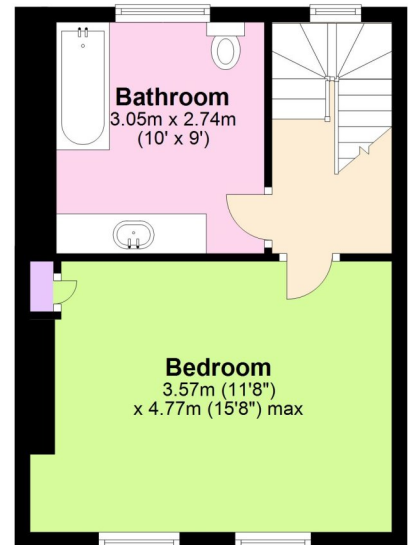
Ground Floor

Approx. 31.8 sq. metres (342.1 sq. feet)



First Floor

Approx. 30.8 sq. metres (331.7 sq. feet)



Total area: approx. 92.1 sq. metres (990.9 sq. feet)

This floorplan is for illustration purposes only and is not to scale. The position and size of doors, windows, appliances and other features are approximate.

