



Lambarde Square, Greenwich, London, SE10

£2,300 per month

2  1  2 

A beautiful two bedroom apartment that is presented in immaculate order throughout, and perfectly located in East Greenwich, just a short walk from Maze Hill mainline Rail and The Royal Park. Offered unfurnished and available immediately, your earliest viewing is highly advised.

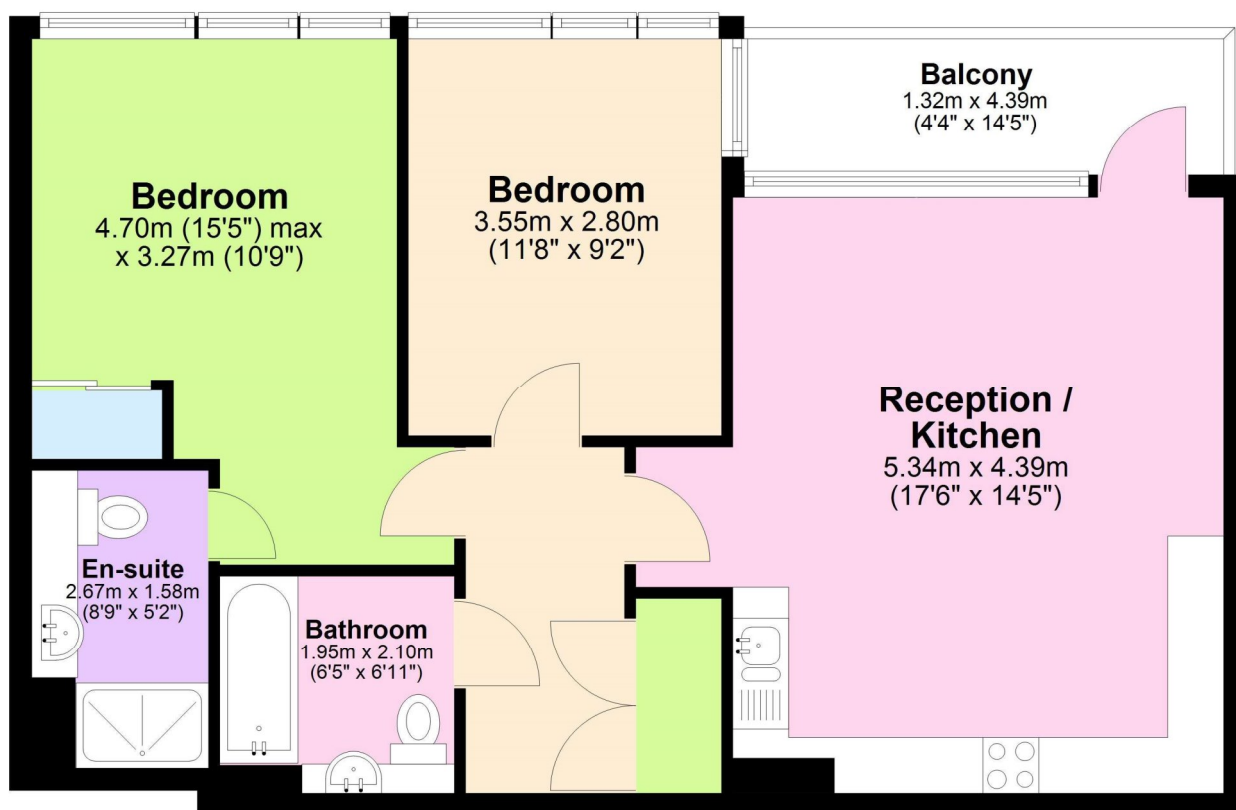


Blackheath

0208 8520999 | blackheath@winkworth.co.uk

First Floor

Approx. 65.2 sq. metres (701.9 sq. feet)

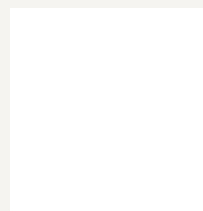


Total area: approx. 65.2 sq. metres (701.9 sq. feet)

MATERIAL INFO

For more information, scan the QR code or visit the link below

Deposit: £2,653.85
Holding Deposit:
Council Tax Band: C
EPC rating: B



<https://www.winkworth.co.uk/rent/property/BLA260031>

Where no figures are shown, we have been unable to ascertain the information. All figures that are shown were correct at the time of printing.

Blackheath

0208 8520999 | blackheath@winkworth.co.uk