



BOURNE ESTATE, LONDON, EC1
£525,000 LEASEHOLD

Winkworth



BOURNE ESTATE, LONDON, EC1N

A good sized two-bedroom first floor flat in a superb Grade II listed Edwardian estate.

This quiet apartment comprises of a separate modern eat-in kitchen, a fully fitted family bathroom, two double bedrooms one with a small ensuite and a large reception room.

The location offers easy access to the city and the West End with local transport links including Farringdon Station, Chancery Lane underground station and numerous bus links.

Tenure: Leasehold

Lease Length: 203 years and 11 months

Service charge: Approximately £1,500 pa

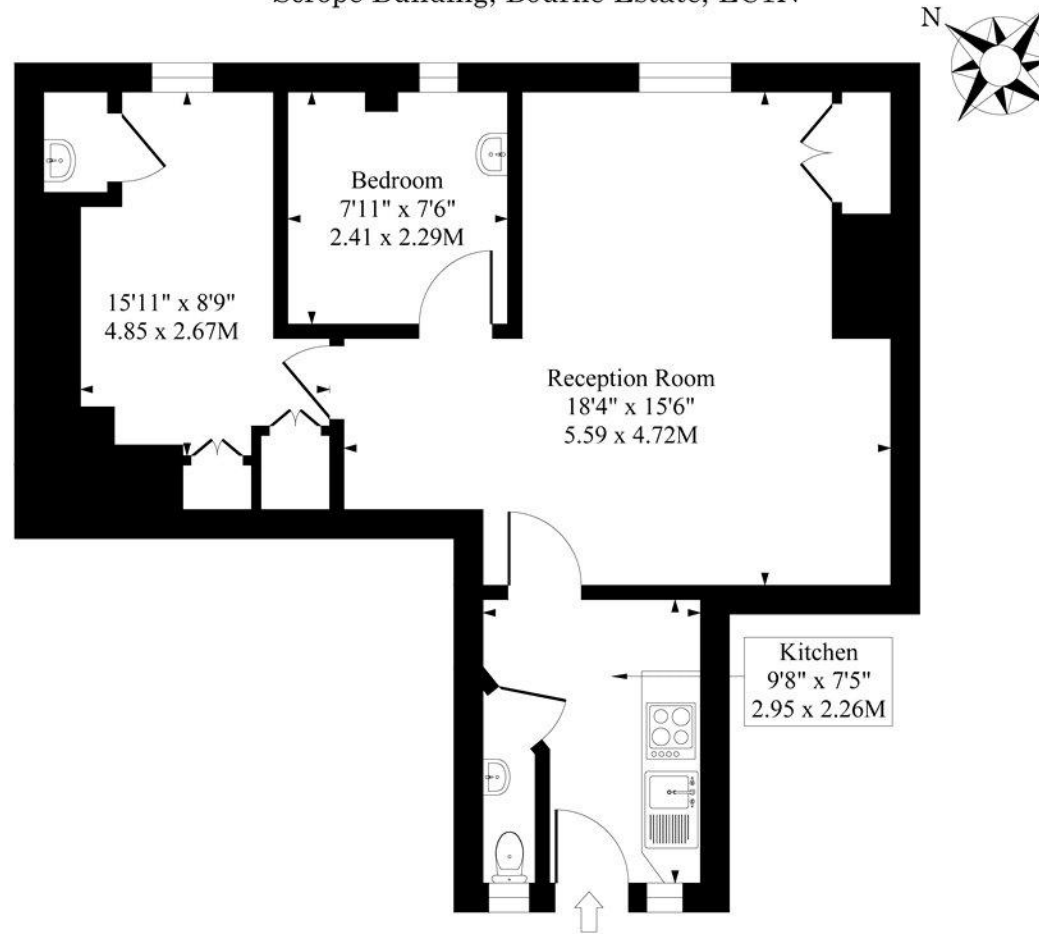
Ground rent: Approximately £10 pa

Council Tax: Band D – Approximately £1,900 pa





Scrope Building, Bourne Estate, EC1N



First Floor

Approximate Gross Internal Area 523 Sq Ft - 48.58 Sq M

Measured in according with RICS guidelines. Every attempt is made to ensure accuracy
However all measurements are approximate.
The floor plan is illustrative purposes only and is not to scale

Score	Energy rating	Current	Potential
92+	A		
81-91	B		
69-80	C	73 C	81 B
55-68	D		
39-54	E		
21-38	F		
1-20	G		

Clerkenwell and City | 020 7405 1288 | clerkenwell@winkworth.co.uk

winkworth.co.uk

Winkworth wishes to inform prospective buyers and tenants that these particulars are a guide and act as information only. All our details are given in good faith and believed to be correct at the time of printing but they don't form part of an offer or contract. No Winkworth employee has authority to make or give any representation or warranty in relation to this property. All fixtures and fittings, whether fitted or not are deemed removable by the vendor unless stated otherwise and room sizes are measured between internal wall surfaces, including furnishings.

Winkworth