



NORFOLK PLACE, HYDE PARK ESTATE, W2  
GUIDE PRICE **£975,000** LEASEHOLD

**SITUATED WITHIN THE PRESTIGIOUS HYDE PARK ESTATE  
AND WITHIN CLOSE PROXIMITY TO THE GREEN SPACES  
OF HYDE PARK AND KENSINGTON GARDENS.**

Paddington | 020 7467 5770 | paddington@winkworth.co.uk

**Winkworth**

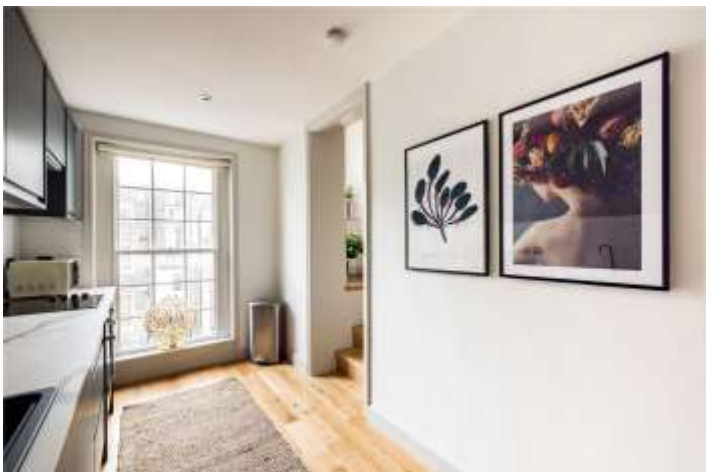
for every step...

*winkworth.co.uk*



### DESCRIPTION:

A beautifully presented and recently modernised to an exacting standard, three-bedroom, two bathroom apartment. Set within an attractive Grade II brown brick and part stucco fronted period building. Norfolk Place is well placed for local shops and restaurants at the ever-popular Connaught Village, together with close proximity to one of the most illustrious medical institutions - St Mary's Hospital. The apartment is conveniently located for Paddington mainline Station, which includes the new £19bn Elizabeth Line connecting to the City of London and Canary Wharf.



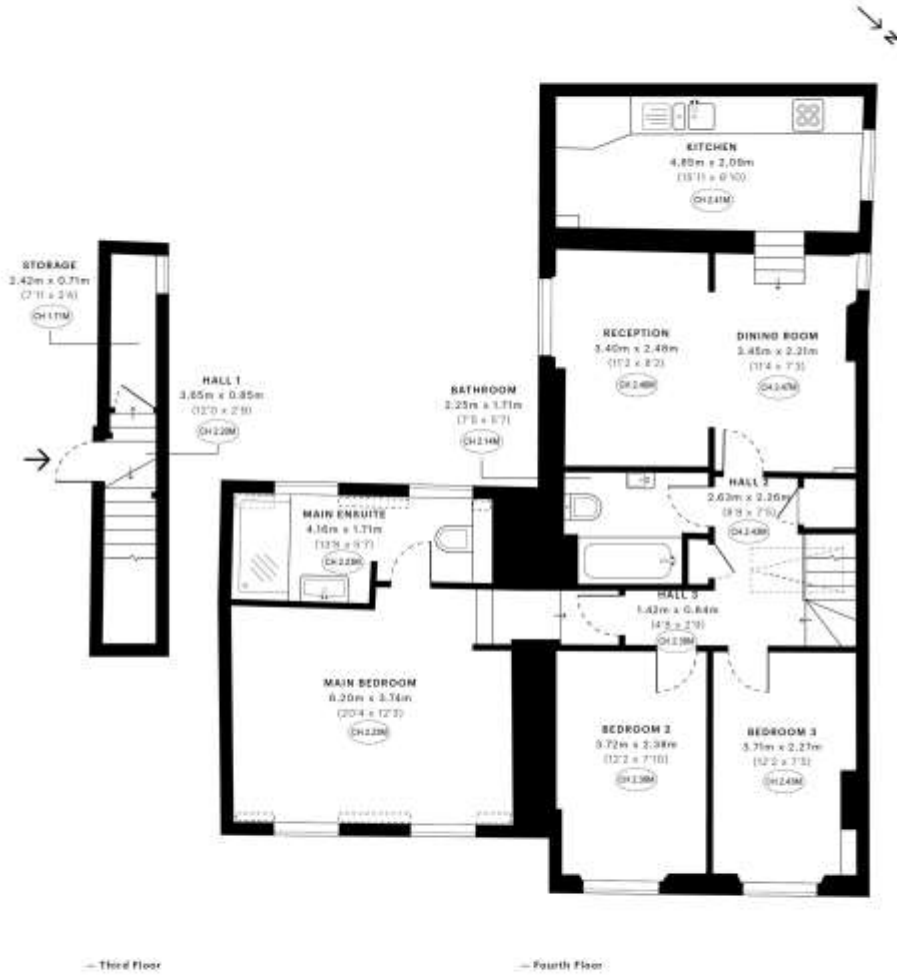
**Winkworth**

for every step...



**Winkworth**

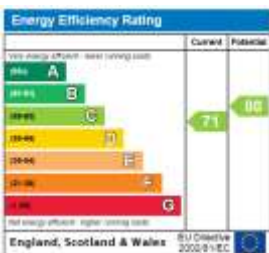
for every step...



This is a floor plan for illustration purposes only. It is not to scale. The position and size of doors, windows, appliances and other features are approximate. All measurements are taken between internal wall surfaces, including furnishings.

www.flyp.co.uk

This floorplan is for illustration purposes only and is not to scale. The position and size of doors, windows, appliances and other features are approximate.



Paddington | 020 7467 5770 | paddington@winkworth.co.uk



for every step...

winkworth.co.uk

Winkworth wishes to inform prospective buyers and tenants that these particulars are a guide and act as information only. All our details are given in good faith and believed to be correct at the time of printing but they don't form part of an offer or contract. No Winkworth employee has authority to make or give any representation or warranty in relation to this property. All fixtures and fittings, whether fitted or not are deemed removable by the vendor unless stated otherwise and room sizes are measured between internal wall surfaces, including furnishings.