



CHEPSTOW ROAD, W2
£595 PER WEEK (£2,578.33 PCM) FURNISHED

**A LOVELY, BRIGHT AND VERY CHARMING ONE BEDROOM
 FLAT WITH A STUDY ON THE GROUND FLOOR OF THIS
 PERIOD BUILDING.**

Notting Hill Lettings | 0207 727 3227 | nottinghill@winkworth.co.uk

Winkworth

for every step...

winkworth.co.uk



DESCRIPTION:

A lovely, bright, and very charming one bedroom flat with a study on the ground floor of this period building. The flat has an open plan kitchen reception room with wood floors and a lovely garden aspect, double bedroom, second bedroom /study with fitted cupboards and bathroom. Available furnished from mid-September. Viewings highly recommended.

Utilities:

Electricity – Mains

Water – Mains

Sewerage – Mains

Heating – Gas

Broadband <https://checker.ofcom.org.uk/en-gb/broadband-coverage>

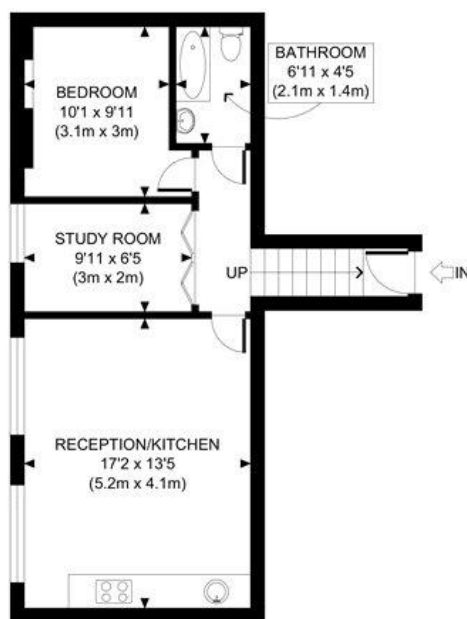
Mobile Coverage <https://checker.ofcom.org.uk/en-gb/mobile-coverage>





LOCATION:

Chepstow Road is an attractive, tree lined, residential street running north from Westbourne Grove, a short walk to all amenities of Westbourne Grove and its many fashionable boutiques and restaurants. Within easy walking distance of the transport facilities at Notting Hill Gate.



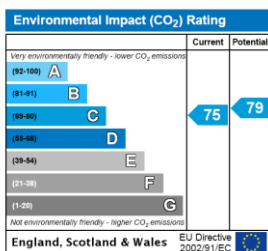
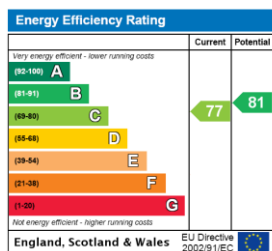
LOWER GROUND FLOOR
GROSS INTERNAL
FLOOR AREA 489 SQ FT

APPROX. GROSS INTERNAL FLOOR AREA: 489 SQ FT/ 45 SQM

PROPERTY PHOTO PLANS.CO.UK
ONE STOP SHOP FOR PROPERTY MARKETING

This plan is for illustrative purposes only and should be used as such by any prospective client. Whilst every attempt has been made to ensure the accuracy of the Floor Plan contained here, measurements of the doors, windows, rooms and any other items are approximate and no responsibility is taken for any errors, omissions, or misstatement. The services, systems and appliances shown have not been tested and no guarantee as to the operability or efficiency can be given.

This floorplan is for illustration purposes only and is not to scale. The position and size of doors, windows, appliances and other features are approximate.



Deposit: £2,975

Holding Deposit: £595

Council Tax Band: F (Westminster)

Where no figures are shown, we have been unable to ascertain the information. All figures that are shown were correct at the time of printing.

Winkworth

for every step...

Notting Hill Lettings | 0207 727 3227 | nottinghill@winkworth.co.uk

winkworth.co.uk

Winkworth wishes to inform prospective buyers and tenants that these particulars are a guide and act as information only. All our details are given in good faith and believed to be correct at the time of printing but they don't form part of an offer or contract. No Winkworth employee has authority to make or give any representation or warranty in relation to this property. All fixtures and fittings, whether fitted or not are deemed removable by the vendor unless stated otherwise and room sizes are measured between internal wall surfaces, including furnishings.