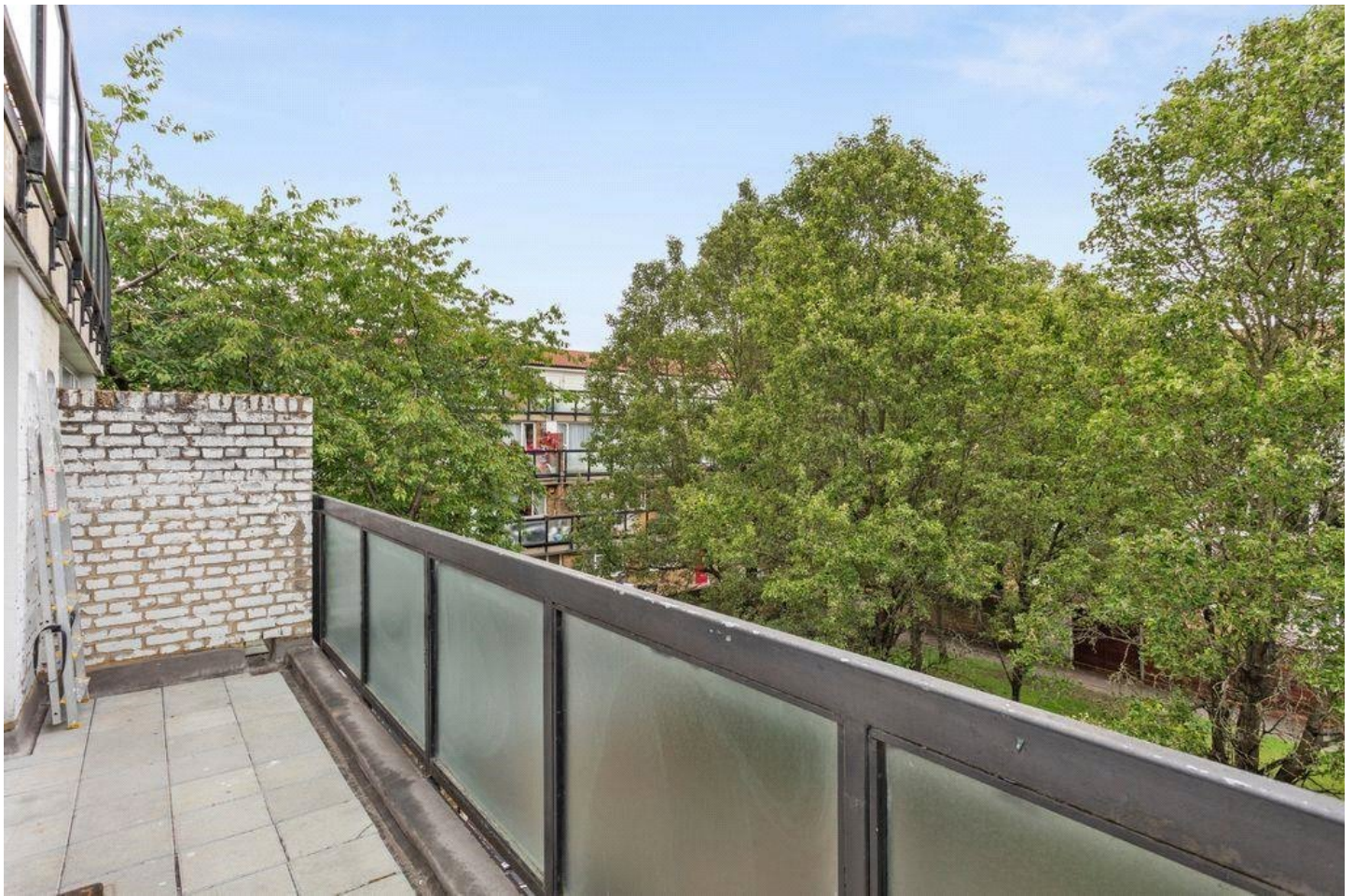


DAMIEN STREET, LONDON, E1
£350,000 LEASEHOLD

BRIGHT, SPACIOUS ONE BEDROOM APARTMENT WITH LARGE, EAST FACING BALCONY

Shoreditch | 020 7749 7650 | shoreditch@winkworth.co.uk

Winkworth



DESCRIPTION:

Damien Street is a quiet, tree lined road tucked away in the busy E1 postcode. This property is ideal for a young professional working in the city, benefiting from the amazing transport links, being within 0.4 miles to Whitechapel Station and Shadwell with the DLR, while having the option of it being within walking distance to Liverpool Street. The property has a modern kitchen and is ready for someone to move in and put their stamp on it. The heating and water is included in the service charge.

The property is accessed via a communal entrance with stairs directly to the entrance on the second floor. There is a large double bedroom to the front elevation, generous wardrobe/storage cupboard, three piece bathroom suite boasting a bath with a shower mixer and shower screen. An open plan kitchen/reception room which leads to the spacious, east facing balcony.

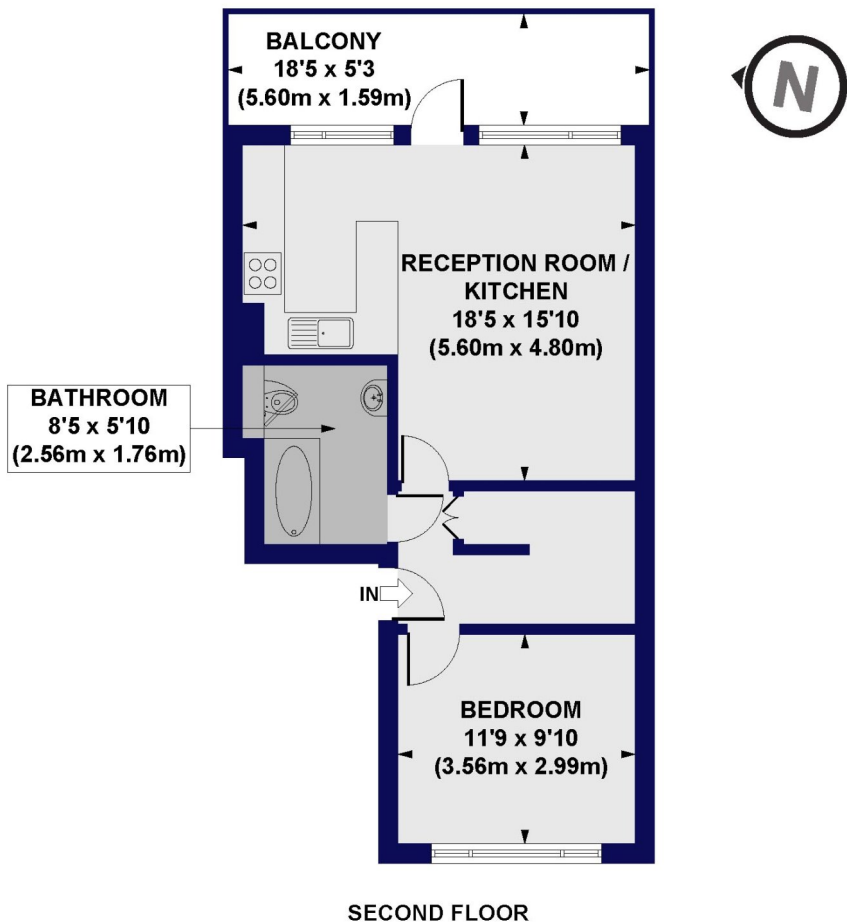
The location is a short distance from Whitechapel Station(Overground/ Underground/ Elizabeth Line), Shadwell Overground and DLR Station offering fantastic access to all major Airports, Canary Wharf and the City making it ideal for commuters. There is a wealth of local amenities in Shadwell, Whitechapel High Street and Commercial Road. There is also a large Sainsbury's near the Whitechapel Station. Spitalfields Market and Vintage shops on Brick Lane are also close by.

Winkworth



Winkworth

Damien Street, E1
Approx. Gross Internal Floor Area 495 sq. ft / 45.97 sq. m



All measurements of walls, doors, windows, fittings and appliances, including their size and location, are shown as standard sizes and do not constitute any warranty or representation by the seller, their agent or CP Creative. Any intending purchaser must satisfy himself by inspection or otherwise as to the correctness of the information contained in these plans. This plan is for illustrative purposes only and should be used as such by any prospective purchasers.

Winkworth

This floorplan is for illustration purposes only and is not to scale. The position and size of doors, windows, appliances and other features are approximate.

Score	Energy rating	Current	Potential
92+	A		
81-91	B		
69-80	C	70 C	73 C
55-68	D		
39-54	E		
21-38	F		
1-20	G		

Shoreditch | 020 7749 7650 | shoreditch@winkworth.co.uk



winkworth.co.uk

See things differently

Winkworth wishes to inform prospective buyers and tenants that these particulars are a guide and act as information only. All our details are given in good faith and believed to be correct at the time of printing but they don't form part of an offer or contract. No Winkworth employee has authority to make or give any representation or warranty in relation to this property. All fixtures and fittings, whether fitted or not are deemed removable by the vendor unless stated otherwise and room sizes are measured between internal wall surfaces, including furnishings.