



KETTERING STREET, SW16
£425,000 SHARE OF FREEHOLD

A FANTASTIC TWO BEDROOM GROUND FLOOR PERIOD MAISONETTE

Tooting | 020 8767 5221 | tooting@winkworth.co.uk

Winkworth

for every step...

winkworth.co.uk



DESCRIPTION:

A beautifully presented two bedroom ground floor period maisonette situated in the popular Furzedown area close to Streatham Common Station and the cafes and shops on Moyser Road.

The property comprises a stunning large reception room with built in bookshelves, two bedrooms, spacious kitchen providing ample dining room and a well-appointed family bathroom to the rear of the property. Leading from the kitchen is a gorgeous South West facing private garden that is ideal for entertaining.

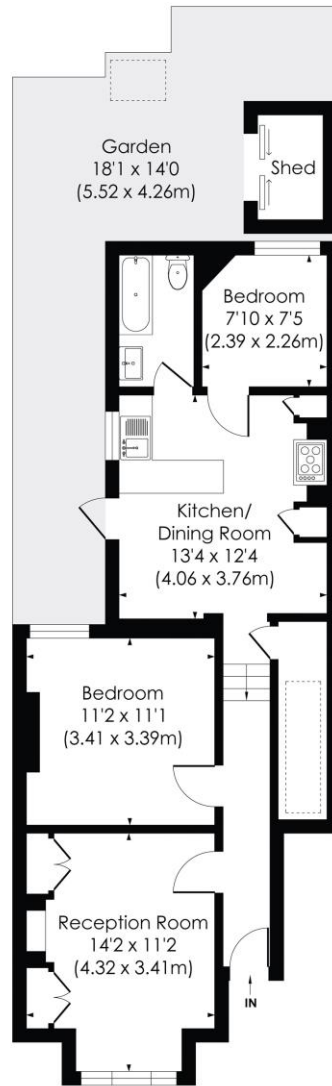
Situated in the Furzedown area close to Streatham Common Mainline station and an 8 minute bus ride to Tooting Broadway Underground. The area has independent cafes and shops on Moyser Road, as well as a large selection of amenities on Streatham High Street and Tooting High Street.



KETTERING STREET, SW16

Approx. Gross Internal Floor Area

658 Sq. ft/61.12 Sq. m



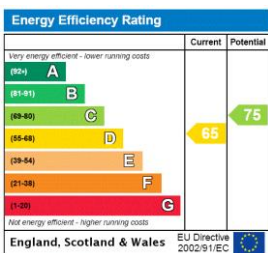
GROUND FLOOR

© Pixangle Property Marketing Ltd. info@pixangle.com Tel: 0208 870 2118

pixangle
PROPERTY MARKETING

This floor plan has been prepared for the purpose of illustration only in accordance with the latest RICS code of measuring practice and is not to scale. All measurements and areas are approximate and whilst every effort has been made to ensure the accuracy of the plan contained here, no responsibility is taken for any error, omission or misstatement.

This floorplan is for illustration purposes only and is not to scale. The position and size of doors, windows, appliances and other features are approximate.



Tooting | 020 8767 5221 | tooting@winkworth.co.uk

Winkworth

for every step...

winkworth.co.uk

Winkworth wishes to inform prospective buyers and tenants that these particulars are a guide and act as information only. All our details are given in good faith and believed to be correct at the time of printing but they don't form part of an offer or contract. No Winkworth employee has authority to make or give any representation or warranty in relation to this property. All fixtures and fittings, whether fitted or not are deemed removable by the vendor unless stated otherwise and room sizes are measured between internal wall surfaces, including furnishings.