



Abbey Road, St John's Wood, London, NW8

£950,000 *Leasehold*



A spacious two-double bedroom apartment with two bathrooms and a private balcony, located on the fourth-floor of this popular, modern development, which benefits from a secure portered entrance, an allocated parking space and a residents' swimming pool. St John's Wood High Street, Underground Station (Jubilee Line) and Lord's Cricket Ground are within a half-mile radius.



Winkworth St John's Wood

020 7586 7001 | stjohnswood@winkworth.co.uk



KEY FEATURES

- Principal Bedroom with En-Suite Bathroom
- Second Bedroom
- Family Bathroom
- Separate Kitchen
- Reception Room
- Private Balcony
- Passenger Lift
- Porterage
- Allocated Parking Space
- Residents' Swimming Pool



MATERIAL INFO

Tenure: Leasehold

Lease Expiry Date: 29/09/2116

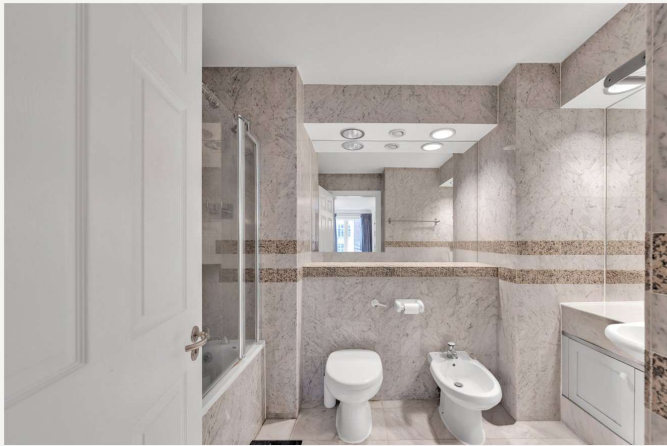
Service Charge: £9,933.66 per annum

Ground Rent: £600 Annually (subject to increase)

Council Tax Band: G

EPC rating: C





| Score | Energy rating | Current | Potential |
|-------|---------------|---------|-----------|
| 92+ | A | | |
| 81-91 | B | | 84 B |
| 69-80 | C | 71 C | |
| 55-68 | D | | |
| 39-54 | E | | |
| 21-38 | F | | |
| 1-20 | G | | |

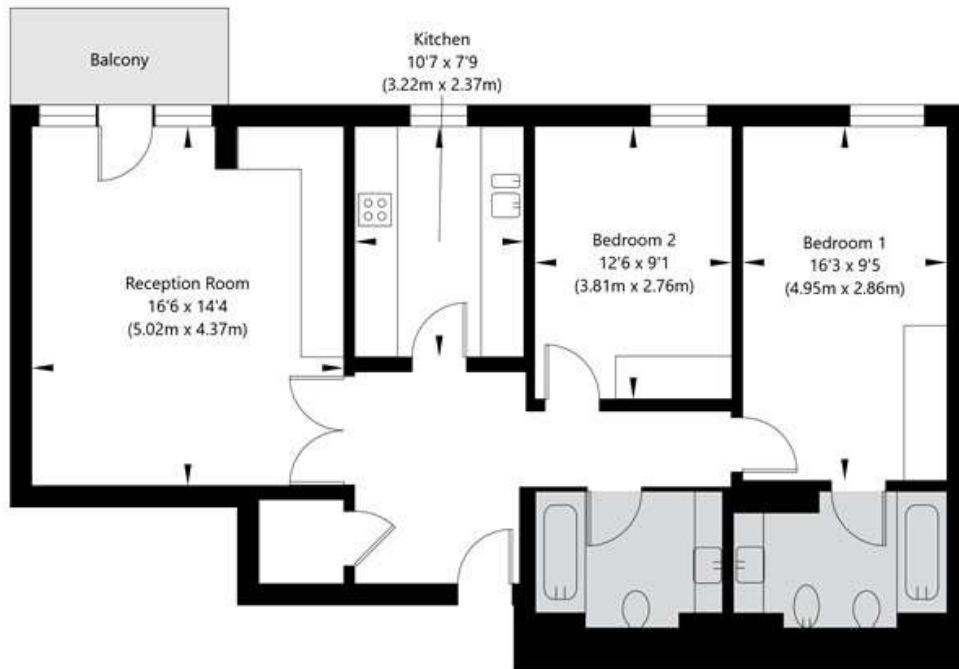
For more information, scan the QR code or visit the link below



<https://www.winkworth.co.uk/sale/property/SJD250189>

20 Abbey Road, London NW8 9BJ

Fourth Floor
GROSS INTERNAL FLOOR AREA
APPROX. 82.79 SQ M / 891 SQ FT



APPROXIMATE GROSS INTERNAL FLOOR AREA 82.79 SQ M / 891 SQ FT
THIS FLOOR PLAN IS FOR ILLUSTRATIVE PURPOSES ONLY AND
SHOULD BE USED FOR THIS PURPOSE BY PROSPECTIVE APPLICANTS AS ITS NOT TO SCALE.

(c) AMBERSHORE PIX LIMITED / PHOTO - VIDEO - FLOOR PLANS / 0800 999 1577 / WWW.AMERSHOREPIX.CO.UK

Where no figures are shown, we have been unable to ascertain the information. All figures that are shown were correct at the time of printing.

Winkworth St John's Wood

020 7586 7001 | stjohnswood@winkworth.co.uk

Winkworth wishes to inform prospective buyers and tenants that these particulars are a guide and act as information only. All our details are given in good faith and believed to be correct at the time of printing but they don't form part of an offer or contract. No Winkworth employee has authority to make or give any representation or warranty in relation to this property. All fixtures and fittings, whether fitted or not are deemed removable by the vendor unless stated otherwise and room sizes are measured between internal wall surfaces, including furnishings.