



37 CALIFORNIA COUNTRY PARK HOMES, NINE MILE RIDE, FINCHAMPSTEAD, RG40 4HT
£199,950

Winkworth



CALIFORNIA COUNTRY PARK

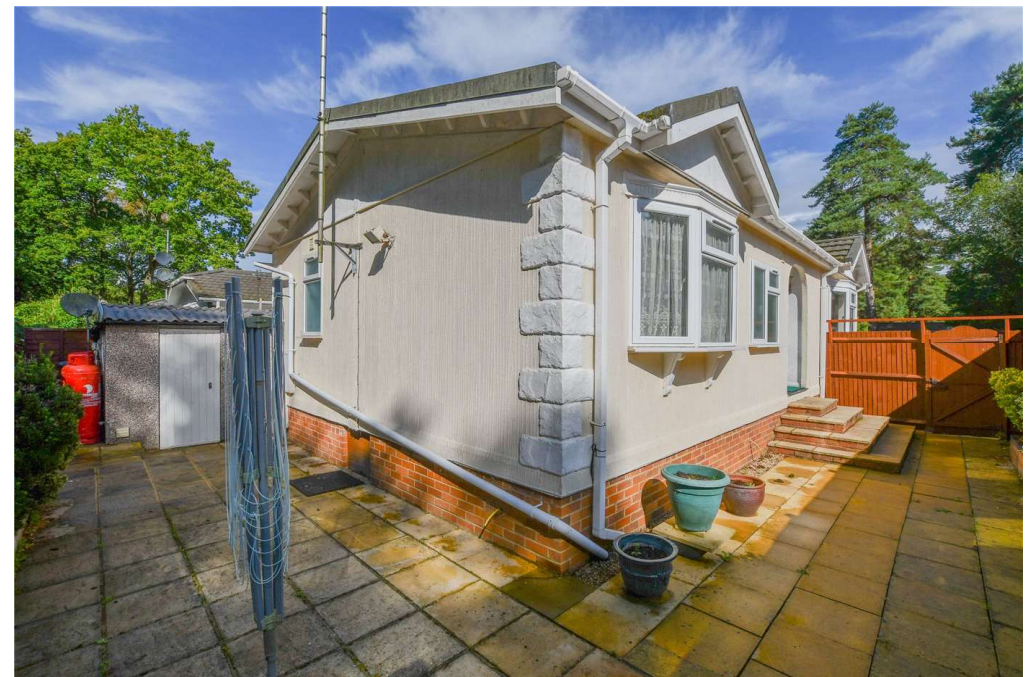
Offered to the market with NO ONWARD chain is this spacious 2 bedroom park home within the grounds of the beautiful California Country Park for the over 45's.

You enter this property into the hallway which has a storage cupboard for your shoes and coats. The hall connects you to the rest of this spacious home. The large L shaped living/dining room has plenty of light coming through the bay windows. The kitchen has a range of appliances and a breakfast bar. There are two double bedrooms with the master bedroom having a walk in wardrobe and en suite shower room and a family bathroom completes the accommodation. To the outside is a fully enclosed and private rear garden backing onto woodland, driveway parking for at least two vehicles and a detached garage.

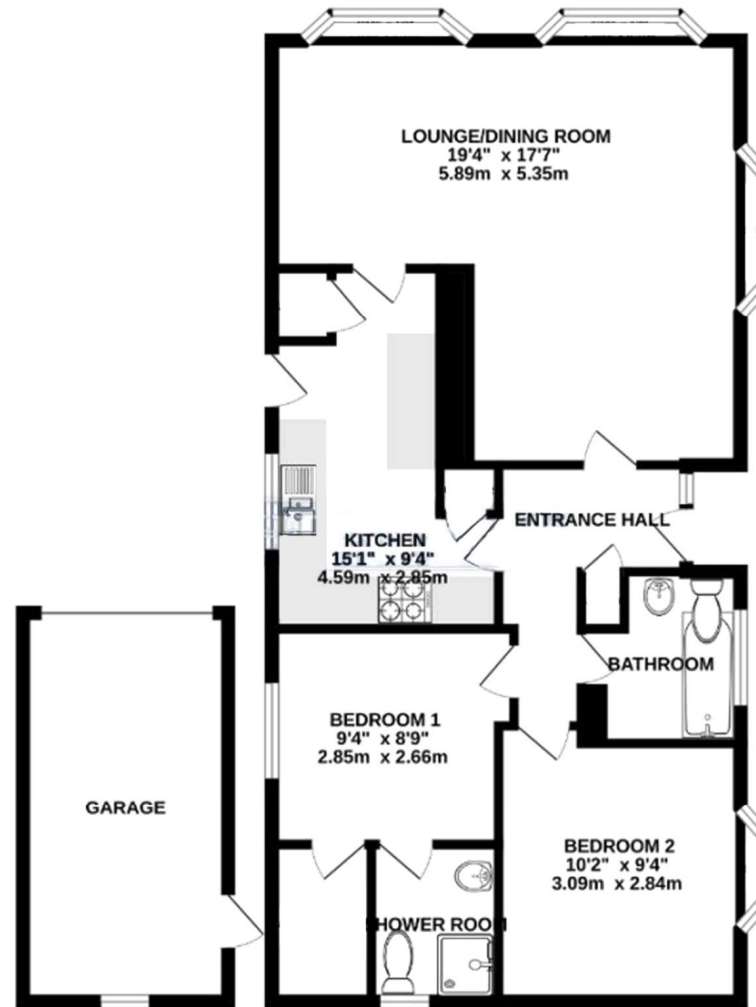
California Park Homes is situated next to the popular country park offering fabulous woodland walks with its very own café.

EPC: EPC Exempt





GROUND FLOOR
901 sq.ft. (83.7 sq.m.) approx.



Wokingham | 01189 072777 | wokingham@winkworth.co.uk

Winkworth wishes to inform prospective buyers and tenants that these particulars are a guide and act as information only. All our details are given in good faith and believed to be correct at the time of printing but they don't form part of an offer or contract. No Winkworth employee has authority to make or give any representation or warranty in relation to this property. All fixtures and fittings, whether fitted or not are deemed removable by the vendor unless stated otherwise and room sizes are measured between internal wall surfaces, including furnishings.

