



GOLDWYN HOUSE, BOREHAMWOOD, HERTFORDSHIRE, WD6
£477,200 LEASEHOLD

**LUXURY RETIREMENT LIVING PLUS FOR THE
OVER 70'S**

Borehamwood | 020 8953 8899 | borehamwood@winkworth.co.uk



DESCRIPTION:

Built by the leading retirement housebuilders McCarthy & Stone, this new site is designed exclusively for the over 70's. Located on the popular Studio Way.

The development comprises a selection of 53 one & two bedroom apartments. Each property has a kitchen fitted with ivory gloss units, mid height oven, integrated microwave, fridge, freezer and ceramic hob. Wet room with slip resistant flooring.

All Retirement Living Plus developments are wheelchair friendly, with a secure mobility scooter room to store and charge your vehicle (subject to availability) There are numerous benefits available for residents such as Club Lounge, Wellness Suite, Domestic Assistance, Lifestyle support, in-house restaurant, to name just a few.

AT A GLANCE

- 2 Bedrooms
- Two Balconies
- Guest Cloakroom
- In- House Restaurant
- 864 Square Feet
- Landscaped Communal Gardens
- Communal Club Lounge
- Two Lifts
- Laundry Room





The Garland

4, 9, 10, 14, 22, 23, 27, 35, 36 & 40

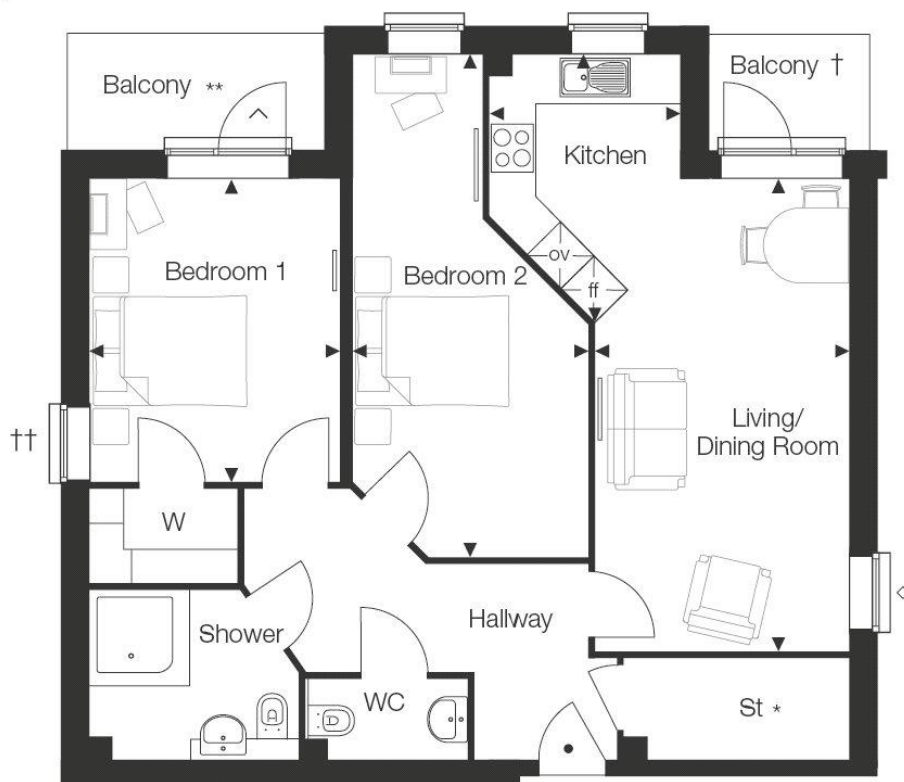
Approximate room sizes:

Living/Dining Room
6104mm x 3305mm / 20'0" x 10'10"

Kitchen
3448mm x 2474mm / 11'4" x 8'1"

Bedroom 1
3922mm x 3213mm / 12'10" x 10'6"

Bedroom 2
6475mm x 3060mm / 21'3" x 10'0"



* MVHR unit, heat interface unit & electric meter to storage cupboard.
** No balcony to plots 4, 10, 23 & 36.

† No balcony to plot 4.

†† No window in plots 9, 10, 22, 23, 35 & 36.

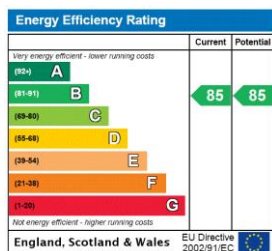
○ Window to plots 10, 23 & 36.

△ Handed balcony door to plots 9, 22 & 35.

▪ Handed door to plots 9, 10, 22, 23, 35 & 36.

ff – Built-in fridge/freezer ov – Built-in oven St – Storage W – Wardrobe
Please refer to Sales Consultant in regards to radiators in hallway.

This floorplan is for illustration purposes only and is not to scale. The position and size of doors, windows, appliances and other features are approximate.



Borehamwood | 020 8953 8899 | borehamwood@winkworth.co.uk