

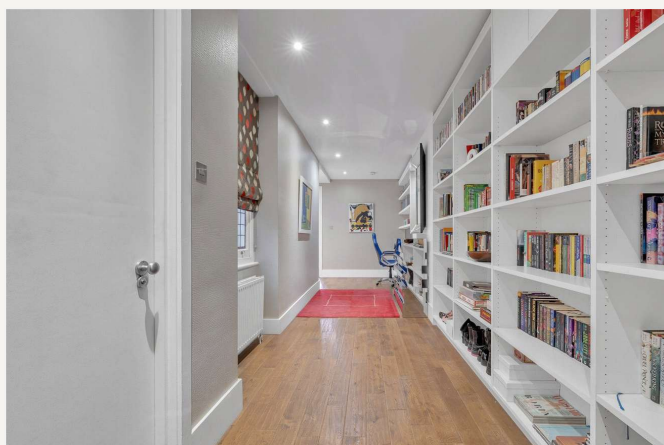
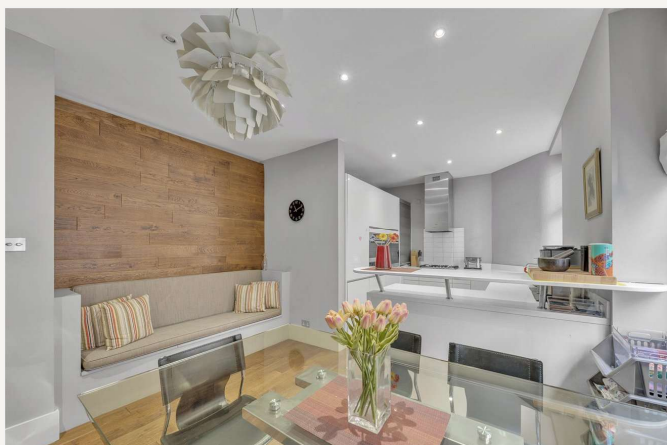


Sandringham Court, Maida Vale, London, W9

£1,500,000 *Leasehold*

3  2  2 

Winkworth have the pleasure in offering this well-proportioned (Approximately 1408 sq. ft.) three bedroom, first floor apartment (with a lift) in excellent condition, forming part of this well-known sought after purpose built block with porterage, a gym (member ship fee required) and beautiful south west facing communal gardens. The apartment has been designed to create a large kitchen dining room, separate reception room, principle bedroom suite, second shower room, two further bedrooms all accessed via a spacious entrance hall. Sandringham Court is located in the heart of this fashionable area close to all the local amenities including, the boutique shops, cafes (approximately 0.2 Miles) on Clifton Road, the famous Regents canal and the underground (approximately 0.4 Miles) at Warwick Avenue (Bakerloo Line)



Winkworth Maida Vale

020 7289 1692 | maidavale@winkworth.co.uk

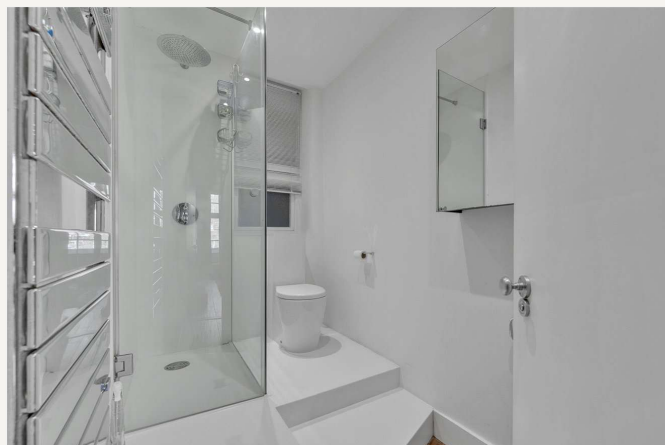
Winkworth

for every step...



KEY FEATURES

- Three Bedrooms
- Shower Room
- Ensuite Shower Room
- WC
- Dining Room
- Separate Kitchen
- Reception Room
- Private Balcony
- Communal Garden
- Leasehold



MATERIAL INFO

Tenure: Leasehold

Lease Expiry Date: 24/06/2979

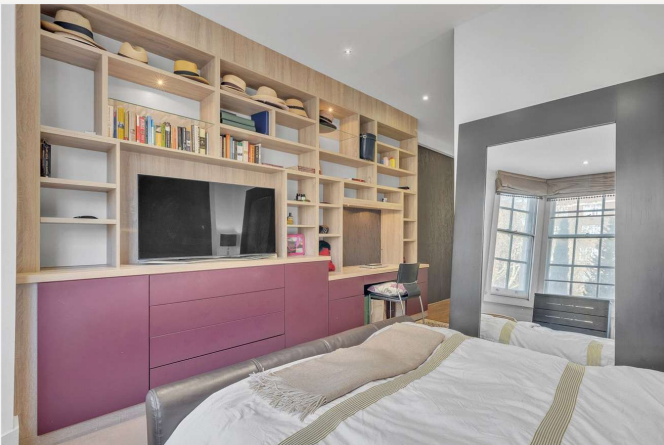
Service Charge: £8,180.6 per annum

Ground Rent: £0 Annually (subject to increase)

Council Tax Band: G

EPC rating: C





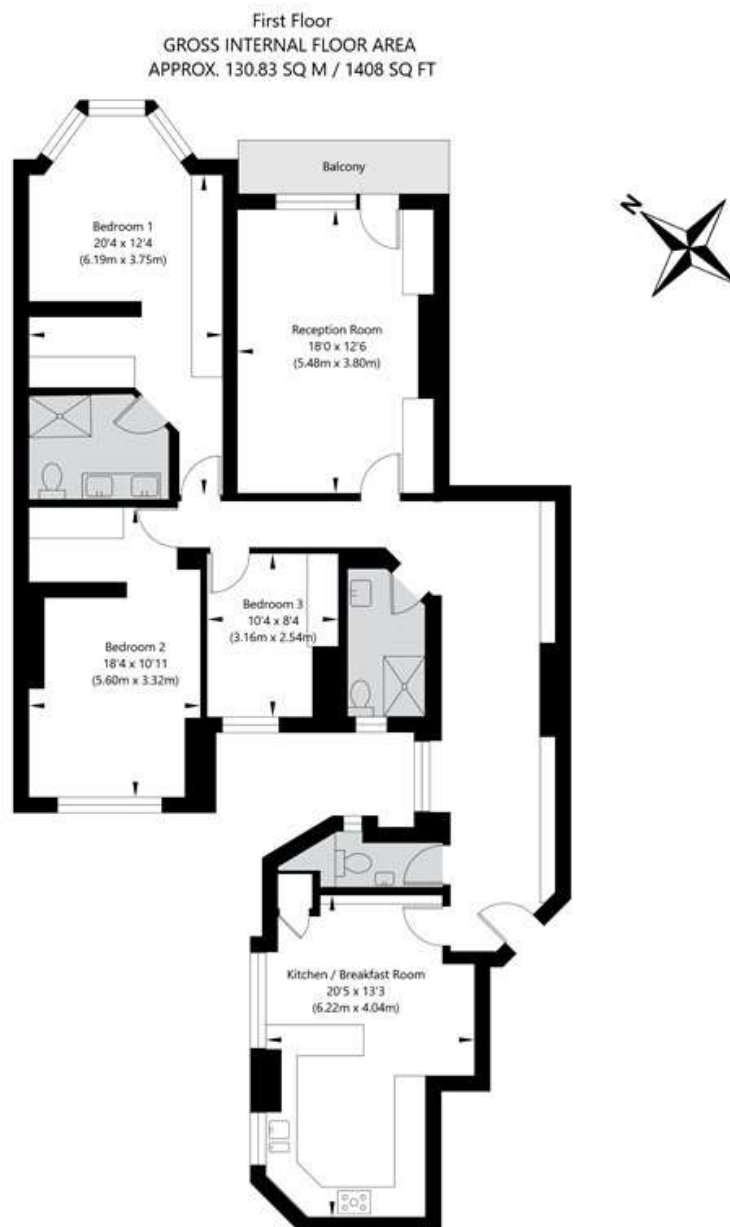
Score	Energy rating	Current	Potential
92+	A		
81-91	B		
69-80	C	76 C	85 B
55-68	D		
39-54	E		
21-38	F		
1-20	G		

For more information, scan the QR code or visit the link below



<https://www.winkworth.co.uk/sale/property/SJD250074>

Sandringham Court, London W9 1UA



APPROXIMATE GROSS INTERNAL FLOOR AREA 130.83 SQ M / 1408 SQ FT
THIS FLOOR PLAN IS FOR ILLUSTRATIVE PURPOSES ONLY AND
SHOULD BE USED FOR THIS PURPOSE BY PROSPECTIVE APPLICANTS AS ITS NOT TO SCALE.

(c) AMBERSHORE PIX LIMITED / PHOTO - VIDEO - FLOOR PLANS / 0800 999 1577 / WWW.AMBERSHOREPIX.CO.UK

Where no figures are shown, we have been unable to ascertain the information. All figures that are shown were correct at the time of printing.

Winkworth Maida Vale

020 7289 1692 | maidavale@winkworth.co.uk

Winkworth

for every step...

Winkworth wishes to inform prospective buyers and tenants that these particulars are a guide and act as information only. All our details are given in good faith and believed to be correct at the time of printing but they don't form part of an offer or contract. No Winkworth employee has authority to make or give any representation or warranty in relation to this property. All fixtures and fittings, whether fitted or not are deemed removable by the vendor unless stated otherwise and room sizes are measured between internal wall surfaces, including furnishings.