



QUEENSDALE CRESCENT, W11
£450,000 LEASEHOLD

A FANTASTIC DUPLEX FLAT WITH TWO DOUBLE BEDROOMS LOCATED IN CLOSE PROXIMITY TO HOLLAND PARK

North Kensington | 020 7792 5000 | northkensington@winkworth.co.uk

Winkworth

for every step...

winkworth.co.uk



DESCRIPTION:

A great first time buy and/or buy-to-let flat providing two large double bedrooms, open plan kitchen/living space and shower room with separate WC spread over the third and fourth floors of this purpose-built building in Notting Hill.

Mortimer House is located on a vibrant street in the heart of Notting Hill and is within easy reach of Portobello, Golborne Road and Westfield Shopping centre including White City House whilst being a short stroll away from the open spaces of Holland Park. Holland Park and Latimer Road underground stations are close by. The A40 is also easily accessed for routes in and out of London.

AT A GLANCE

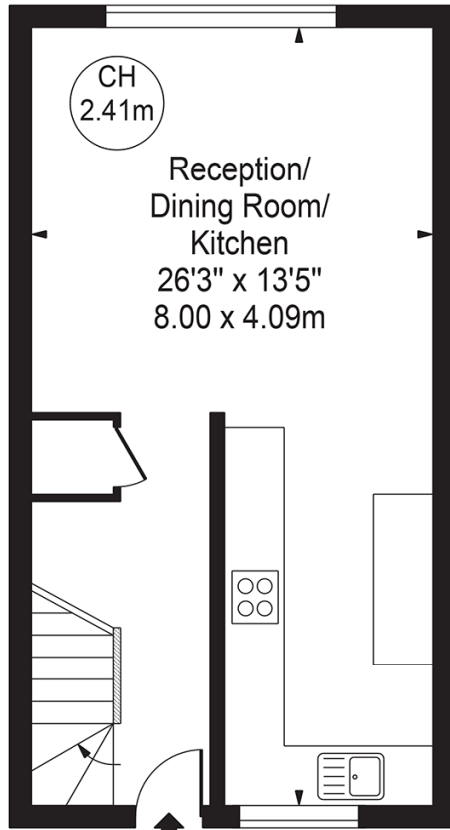
- Duplex Flat
- Third and Fourth Floor
- Contemporary Living Space
- Open Plan
- Fully Fitted Kitchen
- Plenty of Storage
- Abundance of Natural Light
- EPC Rating D



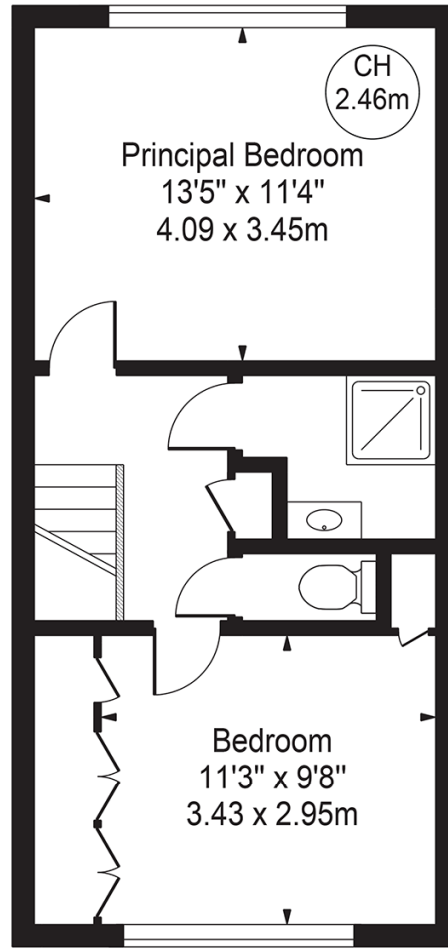


Mortimer House

Approx. Gross Internal Area 760 Sq Ft - 70.62 Sq M



Third Floor
(352 Sq Ft - 32.72 Sq M)



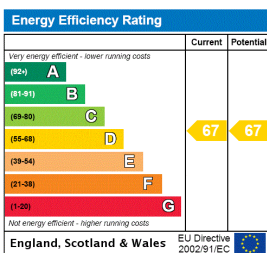
Fourth Floor
(408 Sq Ft - 37.90 Sq M)

For Illustration Purposes Only - Not To Scale

This floor plan should be used as a general outline for guidance only and does not constitute in whole or in part an offer or contract. Any intending purchaser or lessee should satisfy themselves by inspection, searches, enquiries and full survey as to the correctness of each statement. Any areas, measurements or distances quoted are approximate and should not be used to value a property or be the basis of any sale or let.

Copyright Morriarti Photography & Design LTD

This floorplan is for illustration purposes only and is not to scale. The position and size of doors, windows, appliances and other features are approximate.



Tenure: Leasehold
Term: Expires - 29/09/2130
Service Charge: £1668 per annum
Ground Rent: £ 10 Annually (subject to increase)
Council Tax Band: C

Where no figures are shown, we have been unable to ascertain the information. All figures that are shown were correct at the time of printing.

North Kensington | 020 7792 5000 | northkensington@winkworth.co.uk

Winkworth

for every step...

winkworth.co.uk

Winkworth wishes to inform prospective buyers and tenants that these particulars are a guide and act as information only. All our details are given in good faith and believed to be correct at the time of printing but they don't form part of an offer or contract. No Winkworth employee has authority to make or give any representation or warranty in relation to this property. All fixtures and fittings, whether fitted or not are deemed removable by the vendor unless stated otherwise and room sizes are measured between internal wall surfaces, including furnishings.