



Oakcroft Road, Lewisham, London, SE13

£2,100 per month *Furnished*

2  1  1 

Set on this quiet road ideally located for Blackheath Village, the heath, Greenwich Park and Lewisham Station and DLR, is this spacious two double bedroom apartment with a south facing balcony found on the top floor (second) of this small modern block.

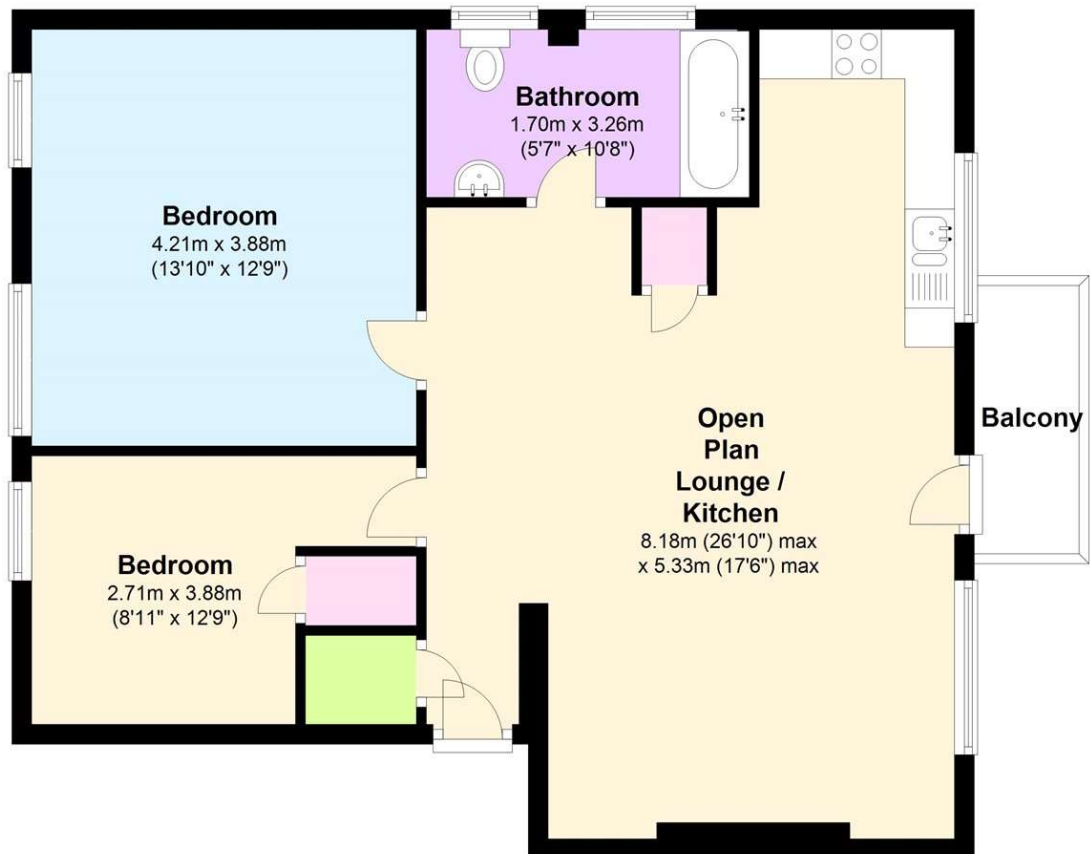


Blackheath

0208 8520999 | blackheath@winkworth.co.uk

Second Floor

Approx. 69.7 sq. metres (750.5 sq. feet)



Total area: approx. 69.7 sq. metres (750.5 sq. feet)

MATERIAL INFO

For more information, scan the QR code or visit the link below

Deposit: £2,423.08

Holding Deposit:

Council Tax Band:

EPC rating: D

<https://www.winkworth.co.uk/rent/property/BLA250197>

Where no figures are shown, we have been unable to ascertain the information. All figures that are shown were correct at the time of printing.

Blackheath

0208 8520999 | blackheath@winkworth.co.uk