



OAKWOOD COURT, W14
£895,000 LEASEHOLD

**A BEAUTIFULLY PRESENTED AND SPACIOUS ONE BEDROOM
PENTHOUSE APARTMENT (769 SQ FT) WITH A SOUTH FACING
BALCONY.**

Kensington | 020 7727 1500 | kensington@winkworth.co.uk



for every step...

winkworth.co.uk



DESCRIPTION:

A beautifully presented and spacious one bedroom penthouse apartment (769 sq ft) with a south facing balcony. The property is situated on the 7th floor (with lift) of period portered mansion block. The flat is well laid out with a large reception room, separate kitchen, bedroom and bathroom.

Oakwood Court is located in The Royal Borough of Kensington & Chelsea and within easy walking distance of Kensington High Street with its many excellent shops, restaurants and transport facilities. The green open spaces of Holland Park are also located within a few minutes walk.

ACCOMODATION:

Entrance Hall | Reception Room | Kitchen | Bedroom | Balcony | Lift | Porters | Communal Garden

LOCAL AUTHORITY:

The Royal Borough of Kensington & Chelsea

NEAREST PUBLIC TRANSPORT:

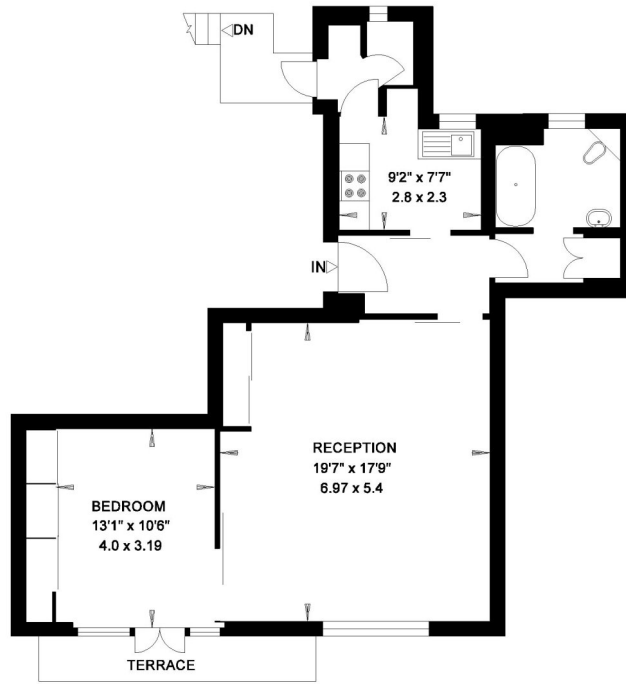
Holland Park
Kensington Olympia
Earl's Court
High Street Kensington





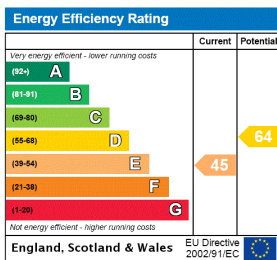
**OAKWOOD COURT
LONDON W8**

Gross Internal Area = 71 sq. metres
769 sq. feet



SEVENTH FLOOR

This floorplan is for illustration purposes only and is not to scale. The position and size of doors, windows, appliances and other features are approximate.



Lease: 999 years from 25 December 1995
Ground Rent: TBC
Service Charge: £3,646.53 per annum
Reserve Fund: £607.60 per annum
Council tax band: E

Please note all figures are approximate

Winkworth

for every step...

winkworth.co.uk

Winkworth wishes to inform prospective buyers and tenants that these particulars are a guide and act as information only. All our details are given in good faith and believed to be correct at the time of printing but they don't form part of an offer or contract. No Winkworth employee has authority to make or give any representation or warranty in relation to this property. All fixtures and fittings, whether fitted or not are deemed removable by the vendor unless stated otherwise and room sizes are measured between internal wall surfaces, including furnishings.