



MYDDELTON SQUARE, EC1R
£1,100,000 SHARE OF FREEHOLD

A LARGE SPLIT LEVEL TWO BEDROOM GARDEN FLAT ARRANGED OVER THE RAISED GROUND AND LOWER GROUND FLOORS OF A GRADE II LISTED GEORGIAN TOWNHOUSE ON THE HIGHLY SOUGHT AFTER MYDDELTON SQUARE.

Clerkenwell | 020 7405 1288 | clerkenwell@winkworth.co.uk

Winkworth

for every step...

winkworth.co.uk



DESCRIPTION:

The property comprises two double bedrooms, one with fitted wardrobes, and a modern bathroom. The upper floor has direct access onto a private south facing landscaped garden and patio, the remainder of the flat comprises large open reception with a modern fitted kitchen, which overlooks St. Marks Church and the garden square.

Myddelton Square is close to the amenities of Amwell Street and the eclectic bars and restaurants of Exmouth Market, it is also within easy walking distance of Upper Street and Angel tube, Islington.



Winkworth

for every step...

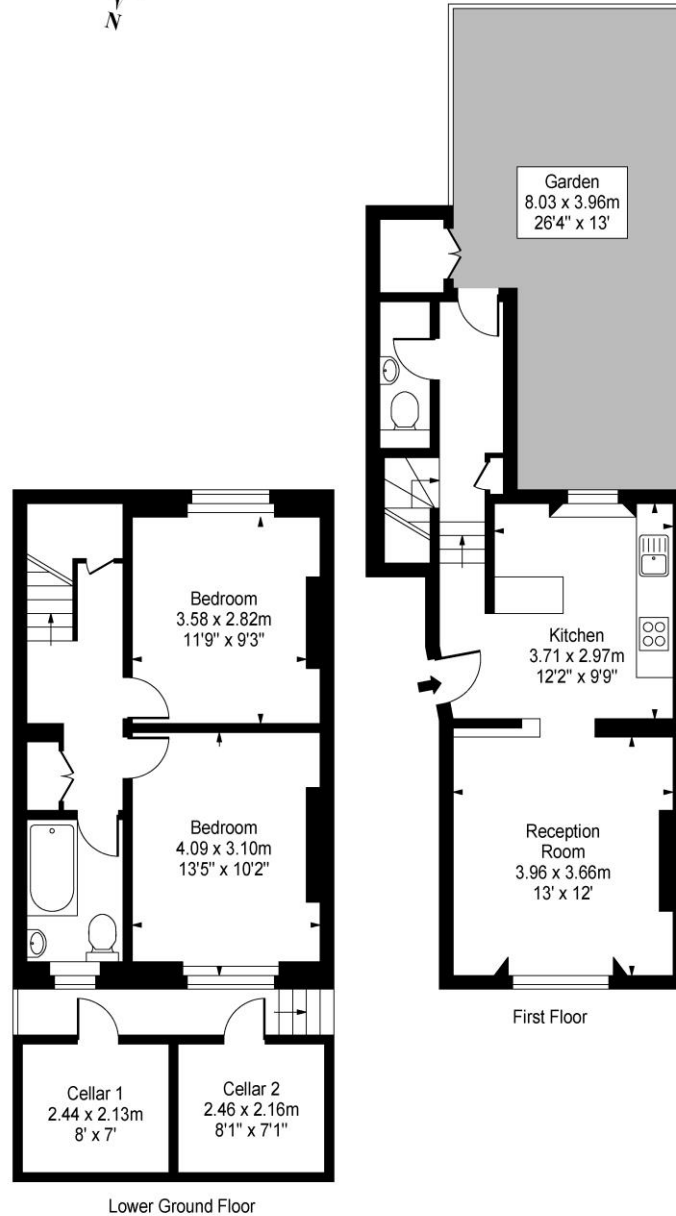


Winkworth

for every step...



11 Myddelton Square EC1



Approx Gross Internal Area

811 Sq Ft - 75.37 Sq M

Measured in accordance with RICS guidelines. Every attempt is made to ensure accuracy
However all measurements are approximate.
The floor plan is illustrative purposes only and is not to scale

This floorplan is for illustration purposes only and is not to scale. The position and size of doors, windows, appliances and other features are approximate.

Clerkenwell | 020 7405 1288 | clerkenwell@winkworth.co.uk



for every step...

winkworth.co.uk

Winkworth wishes to inform prospective buyers and tenants that these particulars are a guide and act as information only. All our details are given in good faith and believed to be correct at the time of printing but they don't form part of an offer or contract. No Winkworth employee has authority to make or give any representation or warranty in relation to this property. All fixtures and fittings, whether fitted or not are deemed removable by the vendor unless stated otherwise and room sizes are measured between internal wall surfaces, including furnishings.