



TRINITY MEWS, W10
£4,250 PER MONTH FURNISHED

Winkworth



TRINITY MEWS, W10

Newly Redecorated Mews House in Secure Gated Development – North Kensington

Available from mid-September, this beautifully redecorated mews house is set within a secure gated development in the heart of North Kensington. The property offers:

Three double bedrooms

Two modern bathrooms

A spacious open-plan kitchen and dining area

A generous first-floor reception room with access to a private balcony overlooking a picturesque courtyard

Secure allocated parking space

Finished to a high standard throughout, this stylish and well-appointed home combines comfort, privacy, and convenience in a sought-after location.




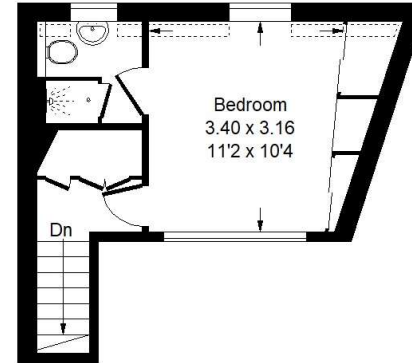


Trinity Mews, W10

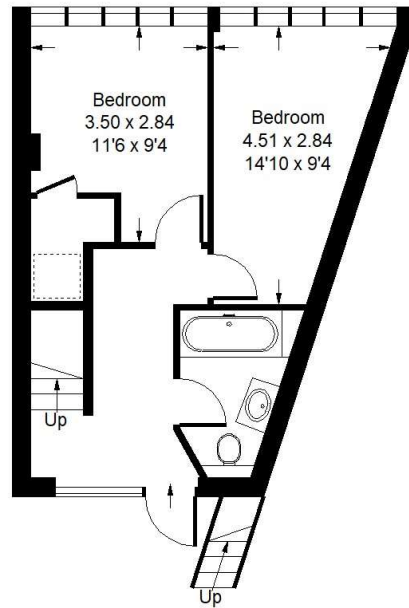
Approx. Gross Internal Area
88.5 sq m / 952 sq ft
(Including Mezzanine)



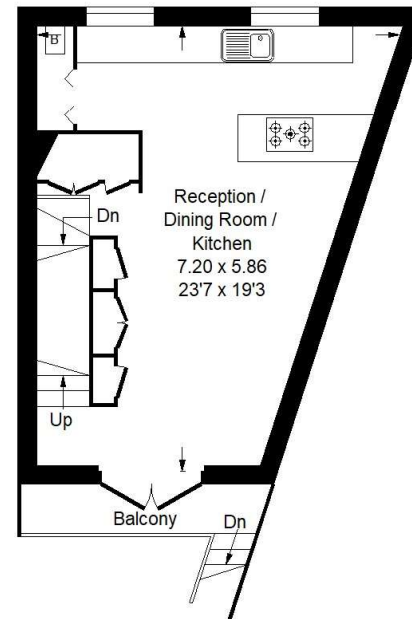
 = Reduced headroom
below 1.5 m / 5'0"



Mezzanine



Ground Floor



First Floor

Whilst every attempt has been made to ensure the accuracy of the floor plan, measurements are approximate and not to scale.
No guarantee is given on the total square footage of the property quoted on the plan. Figures given are for guidance.
Plan is for illustration purposes only, not to be used for valuations.

Score	Energy rating	Current	Potential
92+	A		
81-91	B		88 B
69-80	C	77 C	
55-68	D		
39-54	E		
21-38	F		
1-20	G		

North Kensington | 020 7792 5000 | northkensington@winkworth.co.uk

winkworth.co.uk

Winkworth wishes to inform prospective buyers and tenants that these particulars are a guide and act as information only. All our details are given in good faith and believed to be correct at the time of printing but they don't form part of an offer or contract. No Winkworth employee has authority to make or give any representation or warranty in relation to this property. All fixtures and fittings, whether fitted or not are deemed removable by the vendor unless stated otherwise and room sizes are measured between internal wall surfaces, including furnishings.

Winkworth