



SUTHERLAND AVENUE, W9 £1,100,000 LEASEHOLD

Offered in excellent condition a well-proportioned (1,120 sq. ft.) three double bedroom loft style maisonette occupying the top two floors of a converted period house located in the heart of this sought after area. The apartment boasts some attractive features including a spacious open-plan kitchen/family room with double height ceilings and sky lights offering a wealth of natural light and a large principal bedroom suite. Sutherland Avenue is situated close to all the local amenities offered by this fashionable area including shops, cafes, the Regents Canal and Warwick Avenue underground station (Bakerloo line - 0.4 miles).

Principal Bedroom With Ensuite Shower Room | Two Further Bedrooms | Bathroom | Open Plan Kitchen/Reception Room | Leasehold

Winkworth

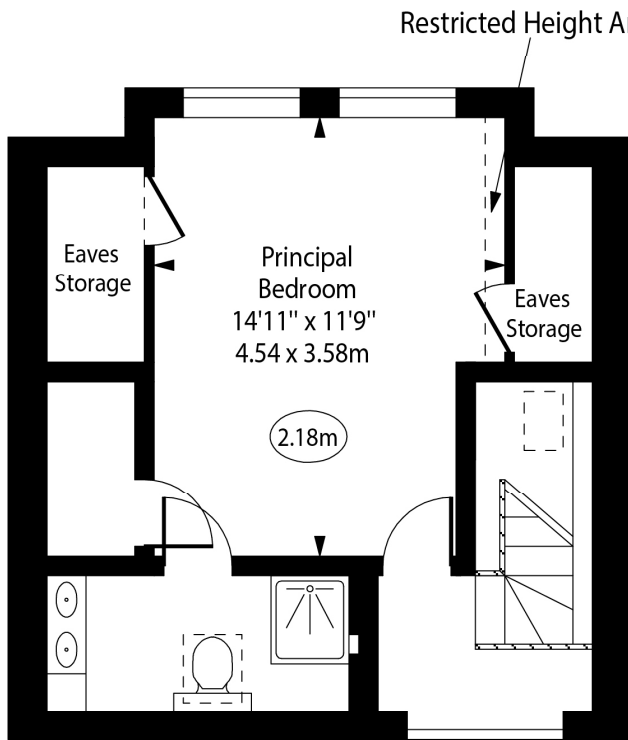
for every step...

[winkworth.co.uk/maida-vale](https://www.winkworth.co.uk/maida-vale)

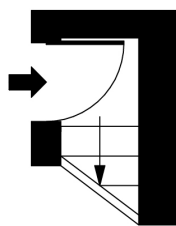


Sutherland Avenue, W9

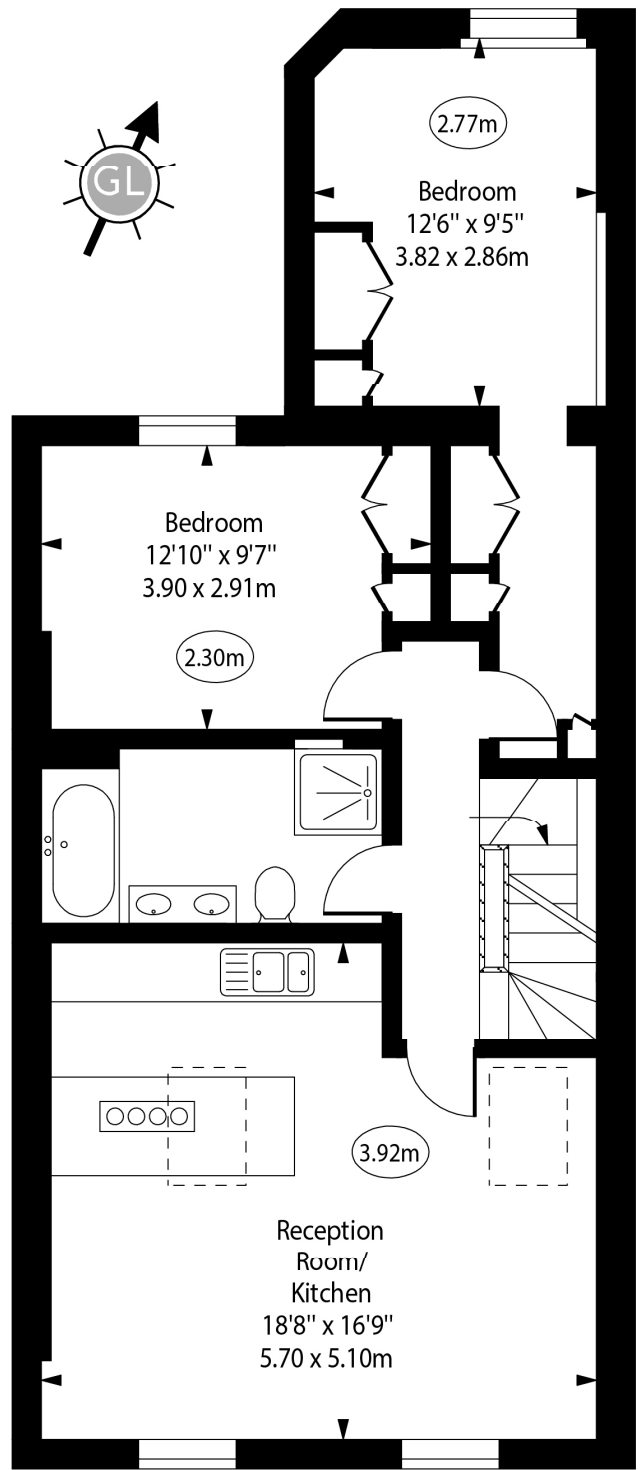
○ - Ceiling Height



Fourth Floor



Second Floor



Third Floor

Approx Gross Internal Area

1077 Sq Ft - 100.05 Sq M

Approx. Floor Area Including Restricted Heights

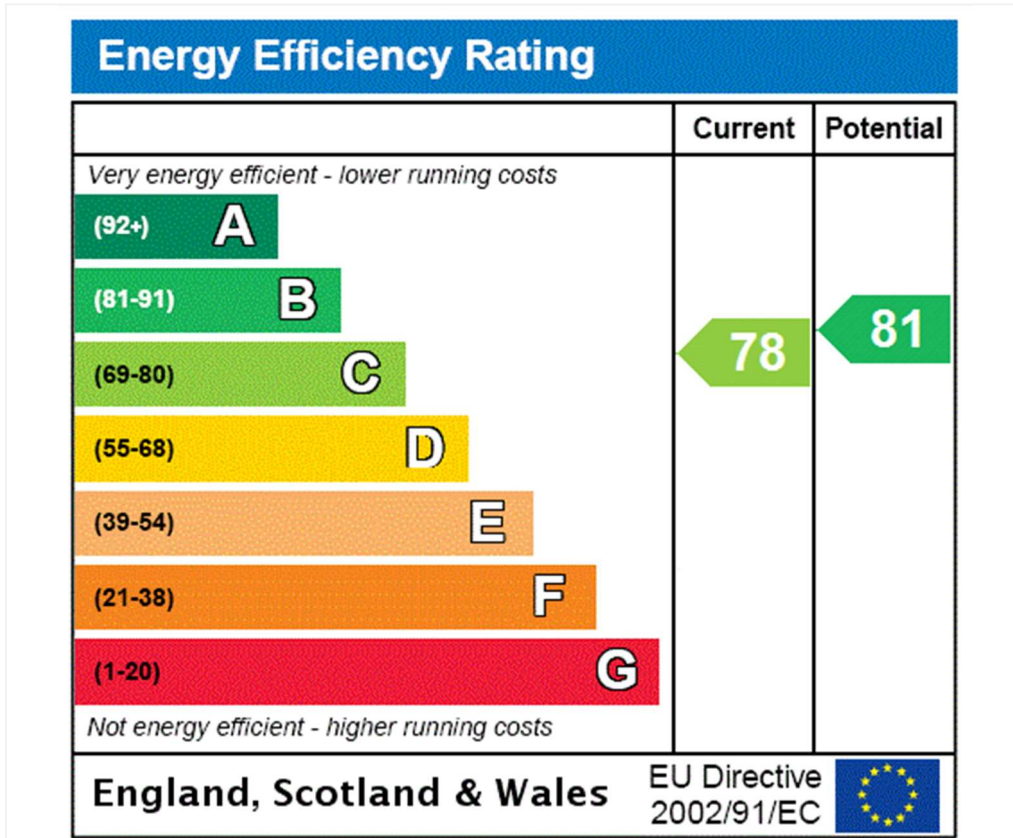
1120 Sq Ft - 104.05 Sq M

(Including Eaves Storage)

For Illustration Purposes Only - Not To Scale

www.goldlens.co.uk

Ref. No. 020270R



Tenure: Leasehold

Term: Expires - 01/01/2110

Service Charge: £3,237 per annum

Ground Rent: £50 annually (subject to increase)

Council Tax Band: E

Where no figures are shown, we have been unable to ascertain the information. All figures that are shown were correct at the time of printing.

Where no figures are shown, we have been unable to ascertain the information. All figures that are shown were correct at the time of printing. These particulars are not an offer or contract, nor part of one. You should not rely on statements by Winkworth in the particulars or by word of mouth or in writing "information" as being factually accurate about the property, its condition or its value. Winkworth does not have any authority to make any representations about the property, and accordingly any information given is entirely without responsibility on the part of the agents, seller(s) or lessor(s). These particulars are prepared on the basis of the information supplied by our client and are a rough guide for information only. The photographs show only certain parts of the property. We are not able to check all of the information and therefore are unable to guarantee accuracy. All interested parties are therefore advised to undertake all necessary inspections and checks that they deem appropriate. Where displayed, the square footage is taken from the floor plans, which are created by an independent supplier. These measurements are approximate and included for illustrative purposes only. The measurements may vary. Winkworth does not make any representation as to the accuracy of these measurements and you should seek to verify them for yourself. Winkworth accept no liability for any loss you may suffer if you rely on these measurements. All fixtures and fittings, whether fitted or not are deemed removable by the vendor unless stated. Any reference to alterations to, or use of, any part of the property does not mean that any necessary planning, building regulations or other consent has been obtained. Amenities and appliances have not been tested

Maida Vale | 211-213 Sutherland Avenue, London, W9 1RU | 020 7289 1692 |



for every step...

winkworth.co.uk/maida-vale

Winkworth wishes to inform prospective buyers and tenants that these particulars are a guide and act as information only. All our details are given in good faith and believed to be correct at the time of printing but they don't form part of an offer or contract. No Winkworth employee has authority to make or give any representation or warranty in relation to this property. All fixtures and fittings, whether fitted or not are deemed removable by the vendor unless stated otherwise and room sizes are measured between internal wall surfaces, including furnishings.