



HOLFORD HOUSE, GREAT PERCY STREET, WC1X
£730,000 LEASEHOLD

**A SPACIOUS AND WELL LOCATED THREE BEDROOM
MAISONETTE ARRANGED OVER THE SECOND AND THIRD
FLOORS OF A LOW RISE 1960S BLOCK ON GREAT PERCY STREET.**

Clerkenwell | 020 7405 1288 | clerkenwell@winkworth.co.uk

Winkworth

for every step...

winkworth.co.uk



DESCRIPTION:

The lower floor comprises modern separate kitchen, spacious separate living room and a toilet. Stairs then lead up to the upper floor, which consists of three double bedrooms and a newly fitted bathroom (with original style traditional tiles floors). The property further benefits from new oak wood flooring and radiators throughout, plentiful of natural light and a lockable shed to safely store bicycles etc. Holford House overlooks Percy Circus and is well located for Amwell Street, Kings Cross, Upper Street and Angel.

Service Charge: £1776pa (includes heating and hot water) | Ground Rent: £10pa | Islington Council Band D: £1716



Winkworth

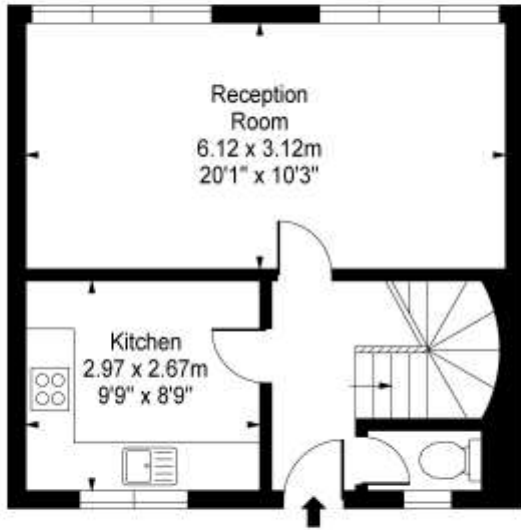
for every step...



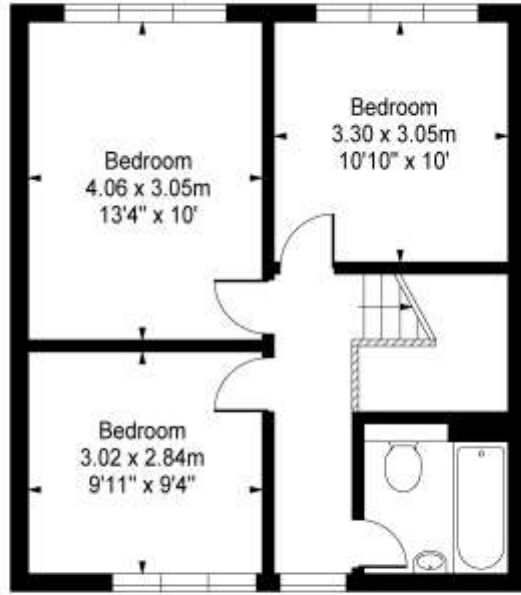
Winkworth

for every step...

Great Percy Street, WC1



Second Floor

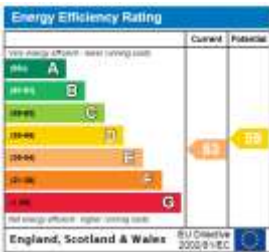


Third Floor

Approx Gross Internal Area 810 Sq Ft - 75.25 Sq M

This floor plan should be used as a general outline for guidance only and does not constitute in whole or in part an offer or contract. Any intending purchaser or lessee should satisfy themselves by inspection, searches, enquiries and full survey as to the correctness of each statement. Any areas, measurements or distances quoted are approximate and should not be used to value a property or be the basis of any sale or let.

This floorplan is for illustration purposes only and is not to scale. The position and size of doors, windows, appliances and other features are approximate.



Clerkenwell | 020 7405 1288 | clerkenwell@winkworth.co.uk



for every step...

winkworth.co.uk

Winkworth wishes to inform prospective buyers and tenants that these particulars are a guide and act as information only. All our details are given in good faith and believed to be correct at the time of printing but they don't form part of an offer or contract. No Winkworth employee has authority to make or give any representation or warranty in relation to this property. All fixtures and fittings, whether fitted or not are deemed removable by the vendor unless stated otherwise and room sizes are measured between internal wall surfaces, including furnishings.