

Appleton Drive

Basingstoke RG24 9RW



Description

This stylish two bedroom home is situated in a modern development on the north side of Basingstoke and comes with a driveway to the side and is offered for part furnished.

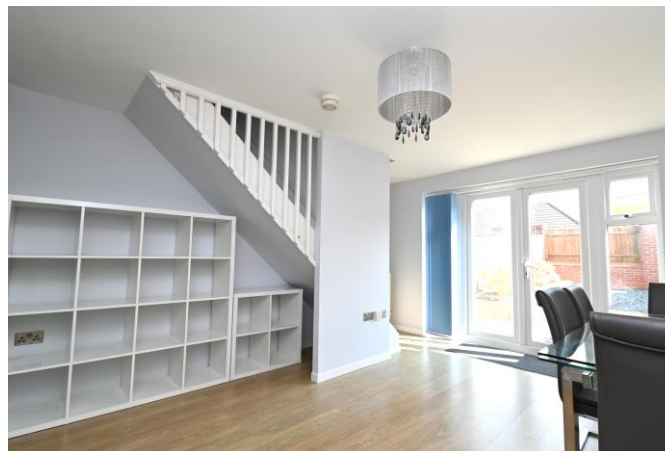
The ground floor has an open plan living accommodation, with the kitchen to the front together with a downstairs cloakroom and the living area to the rear with double glazed French doors out to the enclosed rear garden.

The kitchen has a gas hob with an oven below. There are wall and base cupboards with a free-standing fridge/freezer. In the cloakroom there is a washing machine.

There are sliding doors to close off the living area and kitchen. The living area has storage units under the stairs plus another built-in cupboard.

Upstairs there are two double bedrooms and a white bathroom suite.

Externally, there is a low maintenance enclosed rear garden which gives access to the allocated parking space.



Winkworth

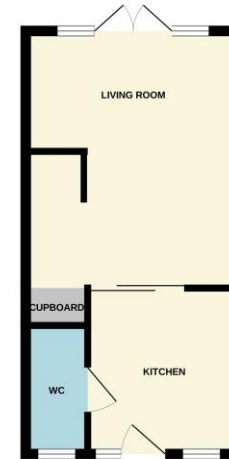
Accommodation

Kitchen/living room
Downstairs cloakroom
Two double bedrooms
Bathroom
Enclosed rear garden
One parking space
Part furnished

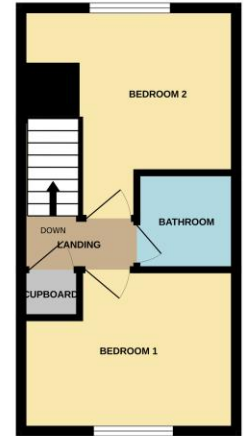
All details are given in good faith and are believed to be correct at time of printing. Winkworth give no representation as to their accuracy and potential purchasers or tenants must satisfy themselves by inspection or otherwise as to their correctness. No employee of Winkworth has authority to make or give any representation or warranty in relation to this property.

Score	Energy rating	Current	Potential
92+	A		95 A
81-91	B		
69-80	C	80 C	
55-68	D		
39-54	E		
21-38	F		
1-20	G		

GROUND FLOOR
285 sq. ft. (26.4 sq.m.) approx.



1ST FLOOR
277 sq. ft. (25.7 sq.m.) approx.



TOTAL FLOOR AREA: 561 sq. ft. (52.2 sq.m.) approx.
While every attempt has been made to ensure the accuracy of the figures contained here, measurements of areas, volumes, rooms and any other facts are approximate and no responsibility is taken for any error, omission or misstatement. The plan is for illustrative purposes only and should be used in conjunction with the property particulars. The actual layout and dimensions may vary from those shown and no guarantee is made with respect to the same.



Basingstoke Office

10B Church Street, Basingstoke, Hampshire, RG21 7QE
01256 811730 | basingstoke@winkworth.co.uk
winkworth.co.uk/Basingstoke

Winkworth

See things differently.