



ST. LAWRENCE TERRACE, LONDON, W10
£575,000 LEASEHOLD

A FANTASTIC FIRST FLOOR PERIOD CONVERSION A STONE THROWS AWAY FROM THE TRENDY GOLBORNE ROAD

North Kensington | 020 7792 5000 | northkensington@winkworth.co.uk
141 Ladbroke Grove, London, W10 6HJ

Winkworth

for every step...

winkworth.co.uk



SUMMARY:

A great opportunity to buy a high ceiling first floor conversion of this beautiful period building. The property is in immaculate condition and benefits from an abundance of natural light and has retained many of its period features.

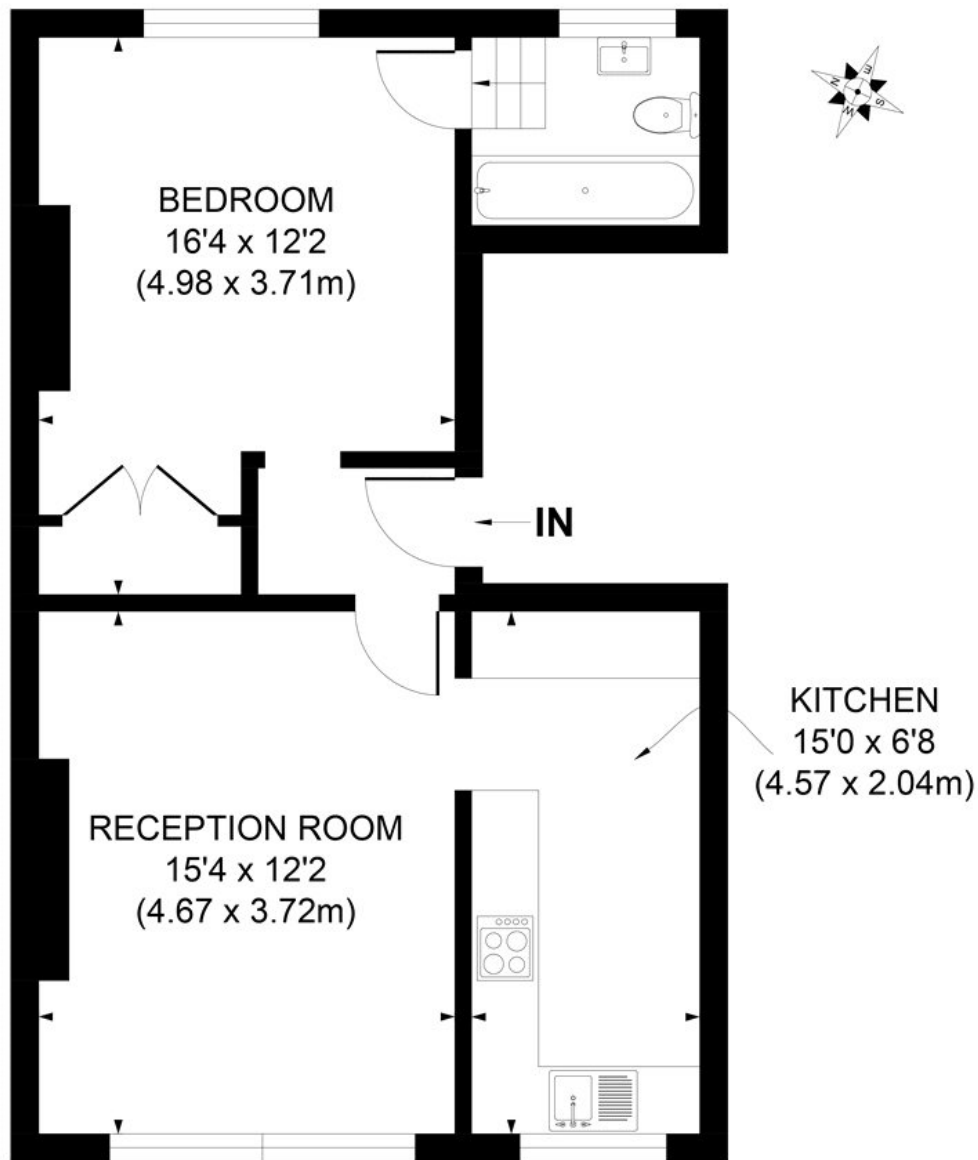
The west-facing living room has great dimensions featuring two large sash windows, the original fireplace and covings. The fully integrated kitchen is separate offering a large amount of storage and benefitting from a gas stove. The bedroom is a good-sized double with plenty of storage leading down a couple of steps into an immaculate fully equipped bathroom.

St. Lawrence Terrace is a pretty tree lined residential street close to the amenities of Portobello Road and Ladbroke Grove. Ladbroke Grove Underground Station is within walking distance (Circle and Hammersmith & City lines)

ACCOMMODATION

- Leasehold 94 years 11 months
- 1 Bedroom
- Reception Room
- Bathroom
- Flat/Apartment, First Floor
- Upper Floor without Lift
- Residents Parking
- Victorian Period Building
- Town/City
- Conversion
- Very Good decoration
- EPC Rating D
- Service Charges Approx £600 pa
- Ground Rent £0



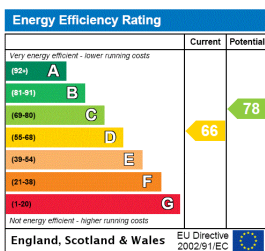


FIRST FLOOR

APPROX. GROSS INTERNAL FLOOR AREA 542 SQ. FT/50.36 SQ. M

Illustration for identification purpose only, not to scale
All measurements are maximum, and includes wardrobes and window bays where applicable
Prepared by Pixangle ©. Tel 020 8870 2118

This floorplan is for illustration purposes only and is not to scale. The position and size of doors, windows, appliances and other features are approximate.



North Kensington | 020 7792 5000 | northkensington@winkworth.co.uk
141 Ladbroke Grove, London, W10 6HJ

Winkworth

for every step...

winkworth.co.uk

Winkworth wishes to inform prospective buyers and tenants that these particulars are a guide and act as information only. All our details are given in good faith and believed to be correct at the time of printing but they don't form part of an offer or contract. No Winkworth employee has authority to make or give any representation or warranty in relation to this property. All fixtures and fittings, whether fitted or not are deemed removable by the vendor unless stated otherwise and room sizes are measured between internal wall surfaces, including furnishings.