



IVY HOUSE, HARRINGTON HILL, LONDON, E5  
OIEO £350,000 LEASEHOLD

## AMAZING MODERNISED ONE BEDROOM FLA IN E5

Hackney | 020 8986 4216 | [hackney@winkworth.co.uk](mailto:hackney@winkworth.co.uk)

**Winkworth**

[winkworth.co.uk](http://winkworth.co.uk)

See things differently





## DESCRIPTION:

Situated in the heart of Hackney, this beautifully modernised one-bedroom flat is located on the top floor of the sought-after Ivy House development. Offering a stylish and contemporary finish, the property benefits from an abundance of natural light and uninterrupted views of the canal a short walk away.

The apartment has been thoughtfully renovated throughout, featuring a bright and airy living space with large windows that make the most of its elevated position. The sleek, modern kitchen is fully fitted with integrated appliances and offers generous storage and worktop space, ideal for both everyday living and entertaining.

The spacious double bedroom continues the theme of light and calm, enjoying a peaceful aspect and ample room for furnishings. The bathroom has been finished to a high standard with elegant fixtures and a contemporary design.

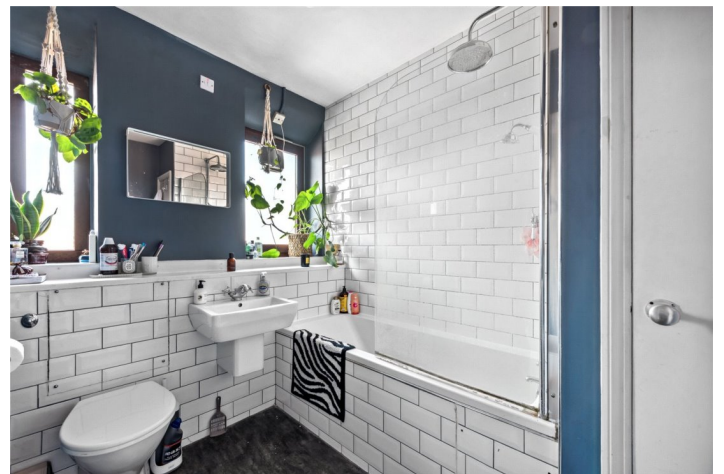
Ivy House is a well-maintained development in a highly desirable part of E5, within easy reach of the vibrant shops, cafés and markets of Chatsworth Road. Millfields Park and the canal towpath provide excellent green spaces and scenic walks, while nearby transport links offer quick and convenient access into Central London and beyond.

This property would make a perfect home for first-time buyers or professionals seeking a modern and tranquil setting in one of East London's most popular neighbourhoods.

### Key Features

- One-bedroom top floor flat
- Fully modernised throughout
- Large windows with canal views
- Bright kitchen and living area
- Contemporary bathroom
- Secure and peaceful development
- Excellent location close to parks, amenities and transport links

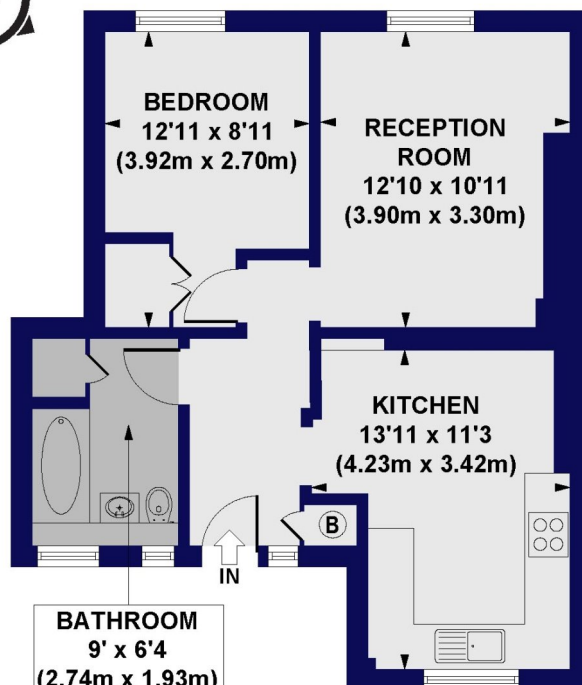
**Winkworth**



Winkworth



**Ivy House, Harrington Hill, E5**  
**Approx. Gross Internal Floor Area 526 sq. ft / 48.89 sq. m**

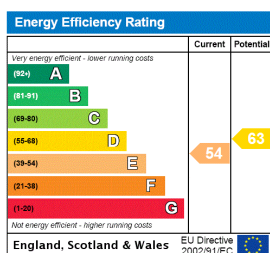


**FOURTH FLOOR**

All measurements of walls, doors, windows, fittings and appliances, including their size and location, are shown as standard sizes and do not constitute any warranty or representation by the seller, their agent or CP Creative. Any intending purchaser must satisfy himself by inspection or otherwise as to the correctness of the information contained in these plans. This plan is for illustrative purposes only and should be used as such by any prospective purchasers.

**Winkworth**

This floorplan is for illustration purposes only and is not to scale. The position and size of doors, windows, appliances and other features are approximate.



Hackney | 020 8986 4216 | [hackney@winkworth.co.uk](mailto:hackney@winkworth.co.uk)

**Winkworth**

[winkworth.co.uk](http://winkworth.co.uk)

See things differently

Winkworth wishes to inform prospective buyers and tenants that these particulars are a guide and act as information only. All our details are given in good faith and believed to be correct at the time of printing but they don't form part of an offer or contract. No Winkworth employee has authority to make or give any representation or warranty in relation to this property. All fixtures and fittings, whether fitted or not are deemed removable by the vendor unless stated otherwise and room sizes are measured between internal wall surfaces, including furnishings.