



1 STIRLING COURT, HECKINGTON, SLEAFORD, NG34 9QJ

£155,000 FREEHOLD

An excellent opportunity for buyers or investors, this Two-Bedroom Semi-detached home in the popular village of Heckington offers scope for modernisation. Situated in a quiet cul-de-sac with off-street parking and a private rear garden, the property presents fantastic potential. To the ground floor, the entrance opens into the Lounge leading through to the Kitchen at the rear, with access to the enclosed garden. The kitchen offers space for appliances and storage, with a window overlooking the garden. Upstairs, there are Two well-proportioned bedrooms and a family bathroom featuring a three-piece suite including a panelled bath with shower over, WC, and hand basin. Externally, the property benefits from a gravel driveway providing off-street parking, a front garden area, and a fully enclosed rear garden and a detached garage. While requiring general cosmetic updating throughout, this property provides an ideal blank canvas for first-time buyers, landlords, or renovators seeking a project in a well-served and well-connected village.

Sleaford | 01529 303 377 | sleaford@winkworth.co.uk

Winkworth

for every step...

winkworth.co.uk

ACCOMMODATION

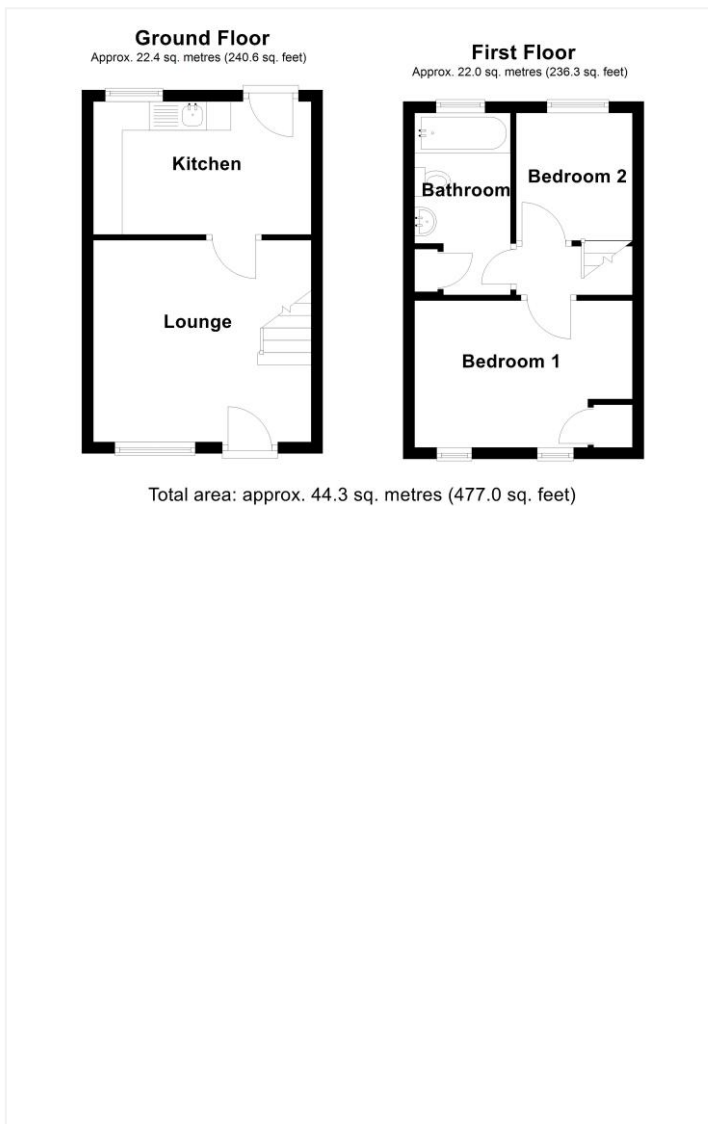
Lounge - 12'5" x 11'6" (3.78m x 3.5m)

Kitchen - 12'5" x 7'7" (3.78m x 2.3m)

Bedroom 1 - 12'5" x 8'4" (3.78m x 2.54m)

Bedroom 2 - 7'3" x 6'7" (2.2m x 2m)

Bathroom



This floorplan is for illustration purposes only and is not to scale. The position and size of doors, windows, appliances and other features are approximate.

Tenure: Freehold

Term: 0 year and 0 months

Service Charge: £0 per annum

Ground Rent: £ 0 Annually (subject to increase)

Council Tax Band: A

Where no figures are shown, we have been unable to ascertain the information. All figures that are shown were correct at the time of printing.

Sleaford | 01529 303 377 | sleaford@winkworth.co.uk

Winkworth

for every step...

winkworth.co.uk

Winkworth wishes to inform prospective buyers and tenants that these particulars are a guide and act as information only. All our details are given in good faith and believed to be correct at the time of printing but they don't form part of an offer or contract. No Winkworth employee has authority to make or give any representation or warranty in relation to this property. All fixtures and fittings, whether fitted or not are deemed removable by the vendor unless stated otherwise and room sizes are measured between internal wall surfaces, including furnishings.