



Harcourt Terrace, West Chelsea, London, SW10

£1,269 per week* / £5,499 per month – Furnished

A stylishly renovated, two double bedroom garden flat with private entrance.

2 Bedrooms | 2 Reception Rooms | 2 Bathrooms | Garden | Lower Ground Floor | 1,379 Approx sq ft | EPC: C

APPLICANT FEES MAY BE APPLICABLE
HOLDING DEPOSIT OF 1 WEEK'S RENT
SECURITY DEPOSIT OF 6 WEEKS' RENT

Winkworth

[winkworth.co.uk](https://www.winkworth.co.uk)

for every step...



DESCRIPTION

Newly refurbished to feature under-floor heating, modern kitchen and contemporary extension with large, sliding doors leading out to the West-facing garden.

This spacious property features two well-proportioned double bedrooms, two bathrooms (one en-suite) and a large semi open-plan kitchen/reception room. The flat benefits from excellent storage throughout, wooden floors and its own entrance.

Harcourt Terrace is ideally located close to the bars and restaurants of the Hollywood Road and the shops and transport links of Fulham Road and Earls Court. The property is available immediately.



ACCOMMODATION

2 Bedrooms, 2 Reception Rooms,
2 Bathrooms, Garden, Lower Ground Floor,
Furnished, 1,379 Approx sq ft

COUNCIL TAX BAND

Band G



Energy Efficiency Rating		
	Current	Potential
Very energy efficient - lower running costs		
(92+) A		
(81-91) B		
(69-80) C	75	76
(55-68) D		
(39-54) E		
(21-38) F		
(1-20) G		
Not energy efficient - higher running costs		
England, Scotland & Wales	EU Directive 2002/91/EC	



HARCOURT TERRACE SW10

APPROX. GROSS INTERNAL AREA *

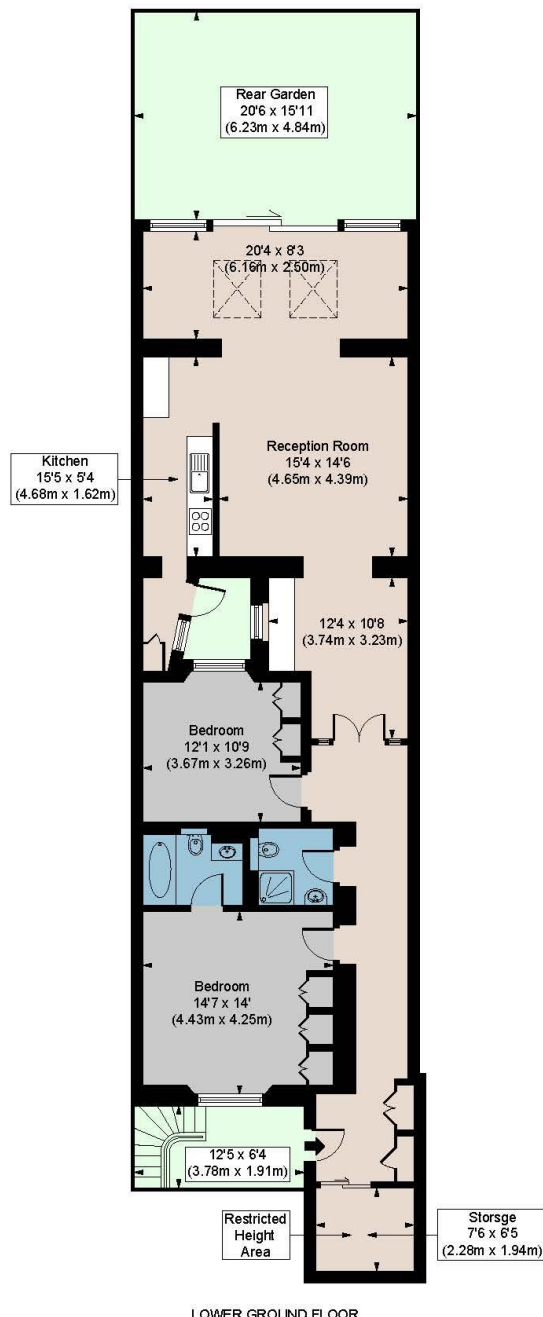
1379 Ft² - 128.11 M² (Including Restricted Height Area & Storage)

1328 Ft² - 123.34 M² (Excluding Restricted Height Area & Storage)

Illustration For Identification Only, Not to Scale

All Calculations include Any/All Areas Under 1.5m Head Height.

* As Defined by RICS - Code of Measuring Practice



LOWER GROUND FLOOR

Floorplan is for illustrative purposes only and is not to scale. Every attempt has been made to ensure the accuracy of the floorplan shown, however all measurements, fixtures, fittings and data shown are an approximate interpretation for illustrative purposes only. Liability for errors, omissions or mis-statement through negligence or otherwise is hereby excluded.

CPCREATIVE
PROPERTY MARKETING

This floorplan is for illustration purposes only and is not to scale. The position and size of doors, windows, appliances and other features are approximate.

**Please note, rent cannot be paid on a weekly basis*

South Kensington Lettings | 020 7370 6767 | lettings.southken@winkworth.co.uk

winkworth.co.uk

for every step...

Winkworth wishes to inform prospective buyers and tenants that these particulars are a guide and act as information only. All our details are given in good faith and believed to be correct at the time of printing but they don't form part of an offer or contract. No Winkworth employee has authority to make or give any representation or warranty in relation to this property. All fixtures and fittings, whether fitted or not are deemed removable by the vendor unless stated otherwise and room sizes are measured between internal wall surfaces, including furnishings.

