



THURLOE COURT, LONDON, SW3
£1,300 PER WEEK

A BEAUTIFUL 2 BEDROOM APARTMENT FINISHED TO A HIGH STANDARD

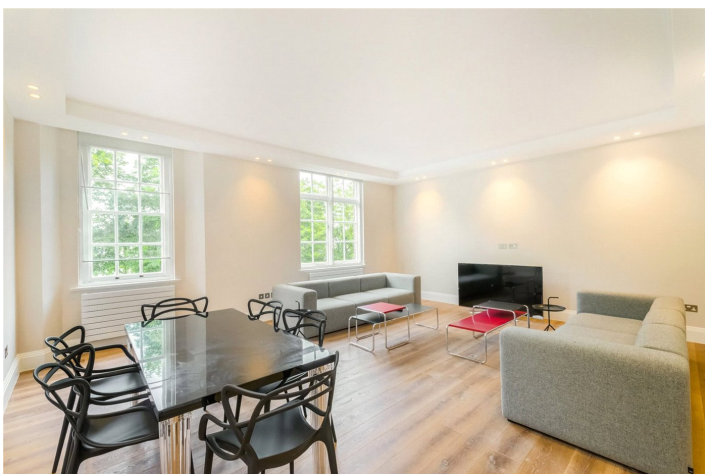
Knightsbridge & Chelsea | 0207 589 6616 | knightsbridge@winkworth.co.uk

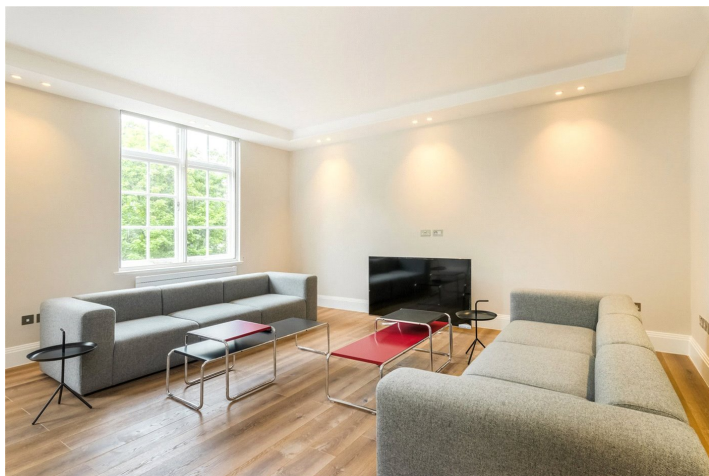
Tenant Fees Apply: Details of fees for tenant referencing, tenancy agreement admin fees and renewal fees are available on the Winkworth website and the link can be found with the displayed rent for the property. Tenants should ensure they are fully conversant with these upfront fees and other costs that are involved at the outset of the tenancy before making an offer to rent and your local Winkworth office will provide written details upon request.



DESCRIPTION:

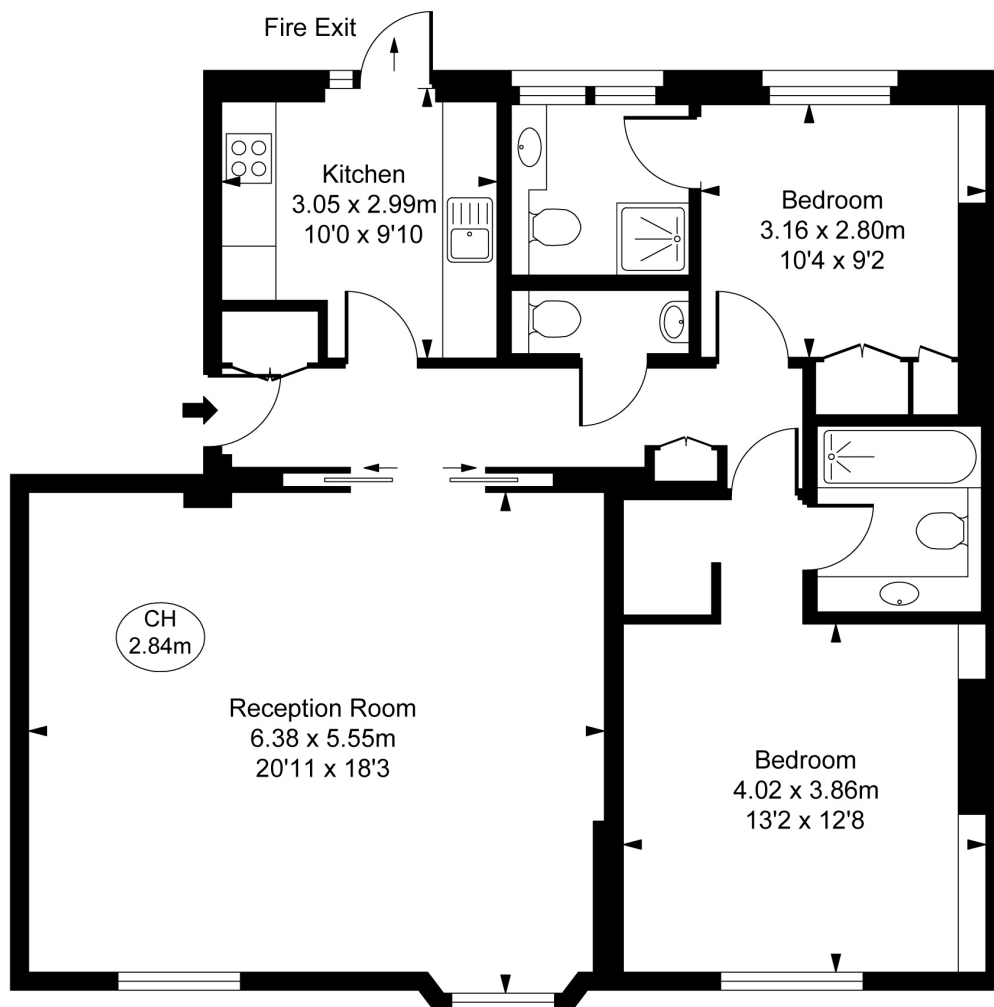
This exquisite two-bedroom, two-bathroom lateral apartment is located on the third floor of the sought-after Thurloe Court, with lift access and views overlooking the picturesque Pelham Crescent on Fulham Road. Finished to the highest standard, the property features two generously sized double bedrooms, each with built-in wardrobes and luxurious en-suite bathrooms with marble finishes. There is also a guest cloakroom, a separate modern kitchen, and a spacious reception room with windows offering views of Pelham Crescent. The apartment boasts elegant wooden flooring throughout and is offered with a long lease.







Thurloe Court,
Fulham Road, SW3
Approximate Gross Internal Area
93.44 sq m / 1,006 sq ft
(CH = Ceiling Heights)



Third Floor

This plan is not to scale. It is for guidance and not for valuation purposes.
All measurements and areas are approximate only, and have been prepared in accordance with the current edition of the RICS Code of Measuring Practice.
© Fulham Performance

This floorplan is for illustration purposes only and is not to scale. The position and size of doors, windows, appliances and other features are approximate.

Deposit: £6,500.00

Holding Deposit: £1,300.00

Council Tax Band:

Where no figures are shown, we have been unable to ascertain the information. All figures that are shown were correct at the time of printing.