



KENSINGTON PARK GARDENS, W11

£795 PER WEEK (£3,445 PCM) Unfurnished

A FANTASTIC BRIGHT AND VERY SPACIOUS TWO DOUBLE BEDROOM MAISONETTE FLAT IN A PERIOD CONVERSION BUILDING OVERLOOKING THE COMMUNAL GARDENS.

Long Let, 2 Bedrooms, 1 Reception Room, 1 Bathroom, Maisonette, Upper Floor without Lift, Balcony, Communal Gardens, Unfurnished, 894 Approx Sq Ft

Winkworth



DESCRIPTION:

Comprising two spacious double bedrooms, separate kitchen, bathroom and large amounts of built in storage throughout the flat. The living area has a small balcony which overlooks the wonderful communal gardens behind and offers a fantastic view (tenants have the right to apply and charges may apply). Available unfurnished and viewings are highly recommended.

LOCATION:

Kensington Gardens Square is a square of imposing stucco fronted buildings encircling two communal gardens, running south from Westbourne Grove with its many shops and restaurants, and just to the east Queensway and its many amenities and transport links.

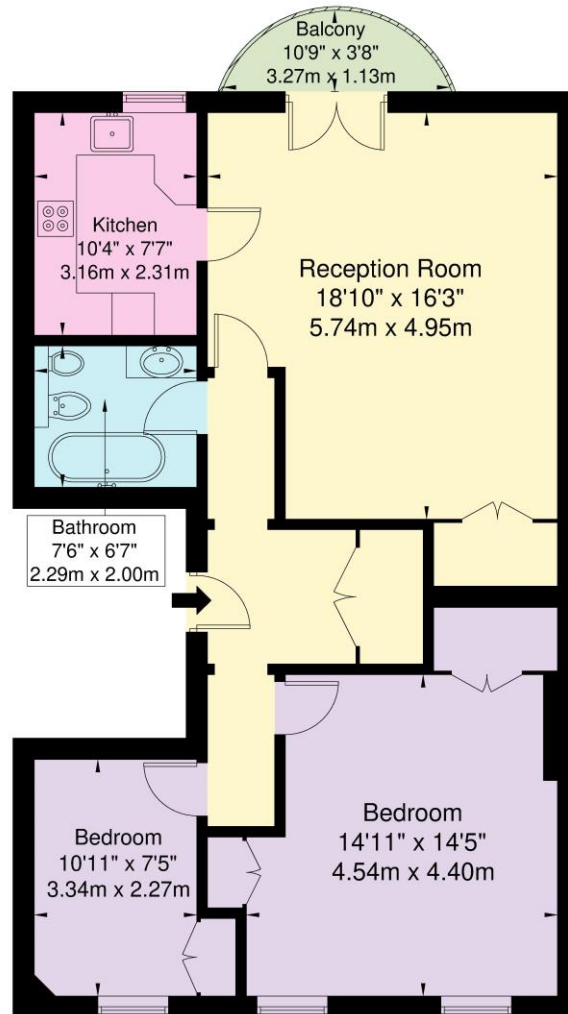
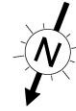
LOCAL AUTHORITY AND COUNCIL TAX BAND:

Royal Borough of Kensington and Chelsea (Band G)



Kensington Park Gardens, W11 3HD

Approx. Gross Internal Area = 83.1 sq m / 894 sq ft



Third Floor

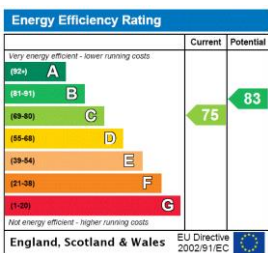
Ref

Copyright **BLEU PLAN**

The Floor plan is not to scale and measurements and areas shown are approximate and therefore should be used for illustrative purposes only. The plan has been prepared in accordance with the RICS code of Measuring Practice and whilst we have confidence in the information produced it must not be relied on. If there is any aspect of particular importance, you should carry out or commission your own inspection of the property.

Copyright @ BLEUPLAN

This floorplan is for illustration purposes only and is not to scale. The position and size of doors, windows, appliances and other features are approximate.



Notting Hill | 0207 727 3227 | nottinghill@winkworth.co.uk



winkworth.co.uk

for every step...

winkworth wishes to inform prospective buyers and tenants that these particulars are a guide and act as information only. All our details are given in good faith and believed to be correct at the time of printing but they don't form part of an offer or contract. No Winkworth employee has authority to make or give any representation or warranty in relation to this property. All fixtures and fittings, whether fitted or not are deemed removable by the vendor unless stated otherwise and room sizes are measured between internal wall surfaces, including furnishings.