



ST. STEPHENS GARDENS, W2
£775 PER WEEK (£3,358.33 PCM) PART FURNISHED

**A TWO DOUBLE BEDROOM PROPERTY BURSTING WITH
 CHARACTER AND FLOODED WITH NATURAL LIGHT.**

Notting Hill Lettings | 0207 727 3227 | nottinghill@winkworth.co.uk

Winkworth

for every step...

winkworth.co.uk



DESCRIPTION:

This gorgeous two double bedroom property is bursting with character and boasts an original fireplace, beautiful cornicing, and soaring high ceilings with floor to ceiling windows which flood the flat with natural light. The kitchen and living space are split over two levels, the higher of which houses the kitchen and opens out on to a lovely south facing private terrace. Both bedrooms open on to a pretty balcony which runs the width of the building and have ample built in storage. Viewings are highly recommended.

Utilities:

Electricity – Mains

Water – Mains

Sewerage – Mains

Heating – Gas

Broadband <https://checker.ofcom.org.uk/en-gb/broadband-coverage>

Mobile Coverage <https://checker.ofcom.org.uk/en-gb/mobile-coverage>



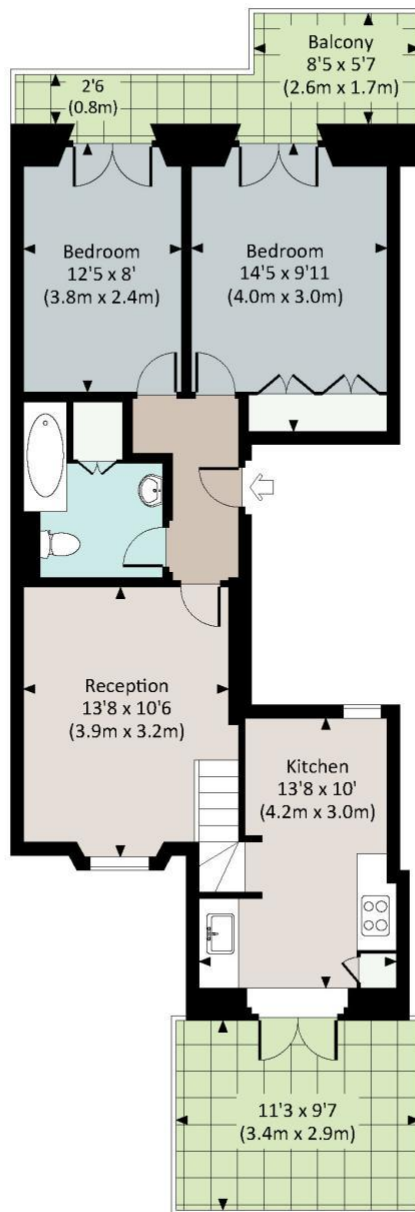


LOCATION:

St Stephens Gardens is an imposing garden square located to the northern end of Chepstow Road, just around the corner from the popular hangouts The Cow and The Westbourne, and within easy walking distance of the shops and restaurants of Westbourne Grove.

ST. STEPHENS GARDENS, W2

Approx. gross internal area
609 Sq.Ft. / 56.6 Sq.M.

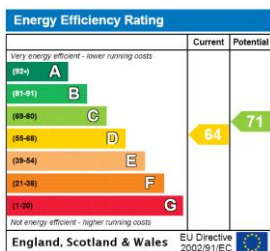


FIRST FLOOR



All measurements are approximate and for illustration purposes only as defined by the RICS Code of Measuring Practice © 2014
Dowling Jones Design www.dowlingjones.com 020 7610 9933

This floorplan is for illustration purposes only and is not to scale. The position and size of doors, windows, appliances and other features are approximate.



Deposit: £3,875

Holding Deposit: £775

Council Tax Band: G (Westminster)

Where no figures are shown, we have been unable to ascertain the information. All figures that are shown were correct at the time of printing.

Notting Hill Lettings | 0207 727 3227 | nottinghill@winkworth.co.uk

Winkworth

for every step...

winkworth.co.uk

Winkworth wishes to inform prospective buyers and tenants that these particulars are a guide and act as information only. All our details are given in good faith and believed to be correct at the time of printing but they don't form part of an offer or contract. No Winkworth employee has authority to make or give any representation or warranty in relation to this property. All fixtures and fittings, whether fitted or not are deemed removable by the vendor unless stated otherwise and room sizes are measured between internal wall surfaces, including furnishings.