



## BURNTHWAITE ROAD, SW6

### £5,500 PER MONTH UNFURNISHED

Nestled on the desirable Burnthwaite Road in Fulham, this beautifully presented five-bedroom Victorian home offers spacious and flexible accommodation across three floors, ideal for modern family living.

Fulham & Parsons Green | 020 7731 3388 | [fulham@winkworth.co.uk](mailto:fulham@winkworth.co.uk)

Tenant Fees Apply: Details of fees for tenant referencing, tenancy agreement admin fees and renewal fees are available on the Winkworth website and the link can be found with the displayed rent for the property. Tenants should ensure they are fully conversant with these upfront fees and other costs that are involved at the outset of the tenancy before making an offer to rent and your local Winkworth office will provide written details upon request.

[winkworth.co.uk](http://winkworth.co.uk)

**Winkworth**

for every step...



The property balances period charm with contemporary design, enhanced by excellent natural light and thoughtful layout.

Upon entering the house, the ground floor welcomes you with an expansive double reception room stretching over 22 feet in length. With high ceilings, large bay windows, and attractive decorative features, this space offers an inviting setting for both relaxing and entertaining. Flowing through to the rear, the kitchen and dining area is well-equipped and generously sized, enjoying a lovely outlook over the garden. Checkerboard tiled flooring and wooden worktops lend a warm, rustic character, while dual-aspect windows and French doors ensure the space remains bright throughout the day. A guest WC is conveniently positioned just off the hallway along with coat storage.

The first floor hosts three well-proportioned bedrooms, including a spacious principal room across the front of the house and two further bedrooms. A stylish family bathroom serves this floor, complete with a double vanity and rainfall shower over bath. Upstairs on the second floor, you'll find two additional bedrooms, both of which benefit from their own respective ensuite shower-rooms. The smaller bedroom can serve as a fifth nursery bedroom or home office/study which has access to a private roof terrace provide a secluded outdoor retreat perfect for summer evenings or morning coffee.

Throughout the house, modern finishes have been sensitively integrated with original features, including feature fireplaces and sash windows. The rear garden, accessible from the kitchen, offers an ideal green escape for outdoor dining and leisure, while the private roof terrace on the upper floor offers a rare and peaceful outdoor spot with elevated views.

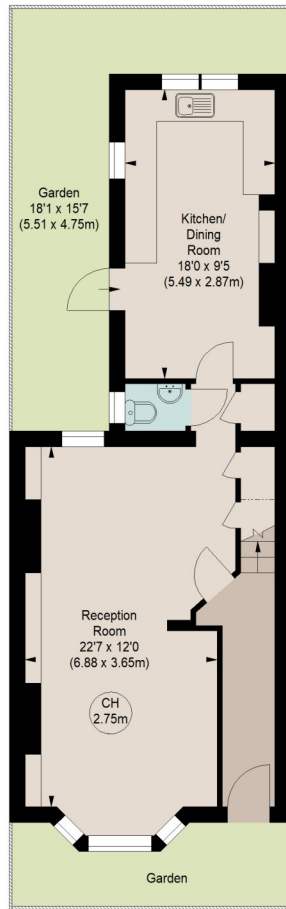
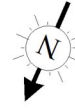
Burnthwaite Road is ideally located close to Parsons Green and Fulham Broadway. Its location has the advantage of being close to several schools, local amenities and extensive shopping and restaurant facilities at Fulham Broadway. There are several bus routes also connecting the property to central London.



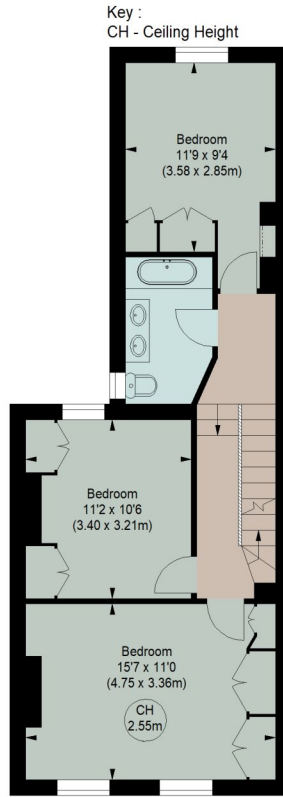


## BURNTHWAITE ROAD, SW6

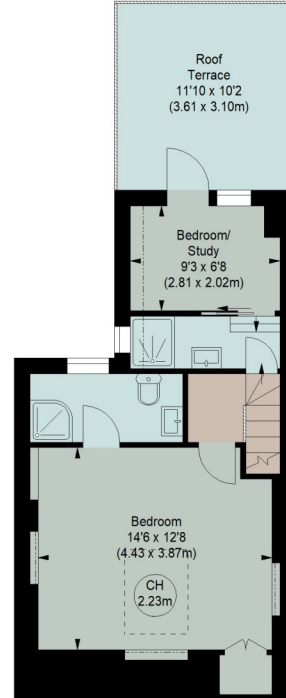
Approximate gross internal area  
1508 sq ft / 140.09 sq m



**GROUND FLOOR**  
(52.93 m<sup>2</sup>)



**FIRST FLOOR**  
(51.92 m<sup>2</sup>)



**SECOND FLOOR**  
(35.27 m<sup>2</sup>)

The floor plan is not to scale and measurements and areas shown are approximate and therefore should be used for illustrative purposes only. The plan has been prepared in accordance with the RICS code of Measuring Practice and whilst we have confidence in the information produced, it must not be relied on. If there is any aspect of particular importance, you should carry out or commission your own inspection of the property.

This floorplan is for illustration purposes only and is not to scale. The position and size of doors, windows, appliances and other features are approximate.

Fulham & Parsons Green | 020 7731 3388 | fulham@winkworth.co.uk

# Winkworth

for every step...

[winkworth.co.uk](http://winkworth.co.uk)

Winkworth wishes to inform prospective buyers and tenants that these particulars are a guide and act as information only. All our details are given in good faith and believed to be correct at the time of printing but they don't form part of an offer or contract. No Winkworth employee has authority to make or give any representation or warranty in relation to this property. All fixtures and fittings, whether fitted or not are deemed removable by the vendor unless stated otherwise and room sizes are measured between internal wall surfaces, including furnishings.