



PUTNEY HILL, LONDON, SW15
£4,000 PER MONTH UNFURNISHED

An immaculately presented three bedroom end of terrace house with a west facing garden and off street parking in the heart of Putney

Putney | 020 8877 1000 | putney@winkworth.co.uk

Winkworth

for every step...

winkworth.co.uk

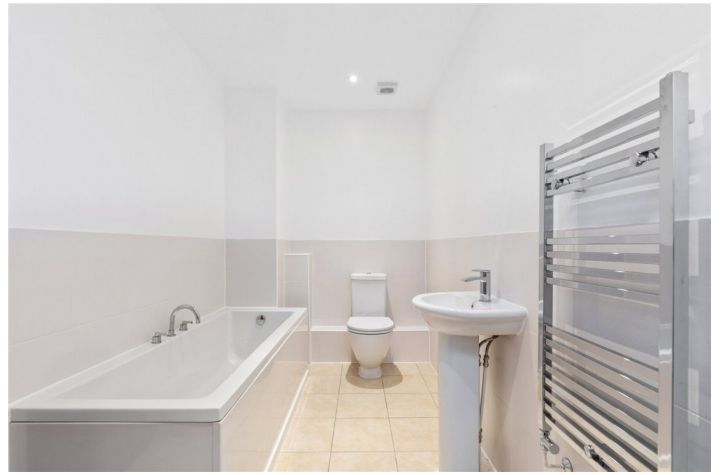


This attractive property has been newly decorated and benefits from wood flooring throughout. Conveniently located just off Putney Hill with allocated off street parking it is a short walk all the transport facilities and amenities Putney has to offer. Towards the front of the house is a generous reception room. At the rear is a spacious, open-plan kitchen/dining room with French doors leading to a sunny west facing garden. There is also a downstairs w/c and the benefit of side access. The first floor comprises three double bedrooms, with the master bedroom featuring built-in wardrobes and ensuite with bath and separate shower. The second bedroom also has fitted wardrobes and the jack-and-jill style family bathroom services both bedroom two and three. This also offers a separate bath and shower. The property is one of only three houses quietly tucked away off Putney Hill but still affording easy access to Putney Mainline and East Putney stations as well as access to the A3. The shops, cafes and restaurants in the area are also on your doorstep.



Winkworth

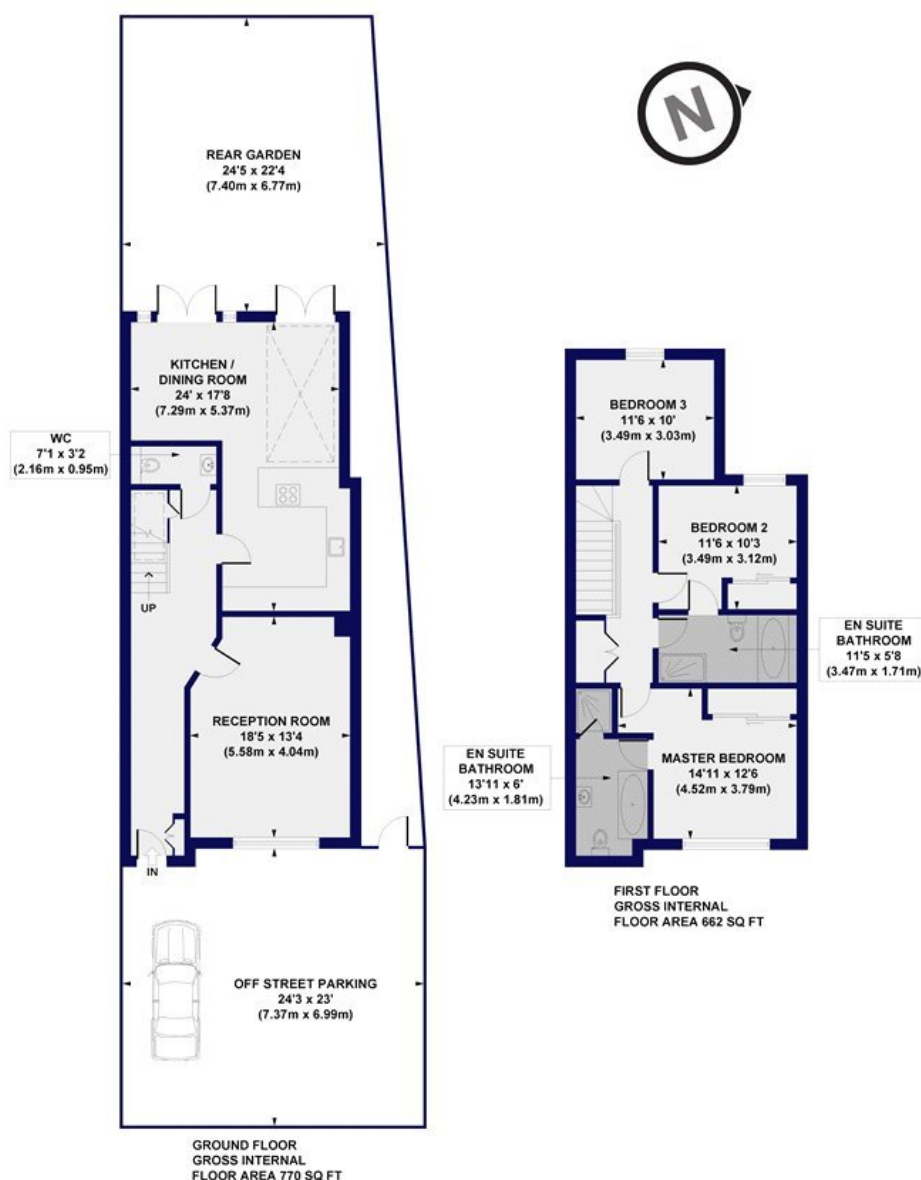
for every step...



Winkworth

for every step...

Putney Hill, SW15
Approx. Gross Internal Floor Area 1432 sq. ft / 133.08 sq. m



All measurements of walls, doors, windows, fittings and appliances, including their size and location, are shown as standard sizes and do not constitute any warranty or representation by the seller, their agent or CP Creative. Any intending purchaser must satisfy himself by inspection or otherwise as to the correctness of the information contained in these plans. This plan is for illustrative purposes only and should be used as such by any prospective purchasers.

Winkworth

This floorplan is for illustration purposes only and is not to scale. The position and size of doors, windows, appliances and other features are approximate.

Putney | 020 8877 1000 | putney@winkworth.co.uk

Winkworth

for every step...

winkworth.co.uk

Winkworth wishes to inform prospective buyers and tenants that these particulars are a guide and act as information only. All our details are given in good faith and believed to be correct at the time of printing but they don't form part of an offer or contract. No Winkworth employee has authority to make or give any representation or warranty in relation to this property. All fixtures and fittings, whether fitted or not are deemed removable by the vendor unless stated otherwise and room sizes are measured between internal wall surfaces, including furnishings.