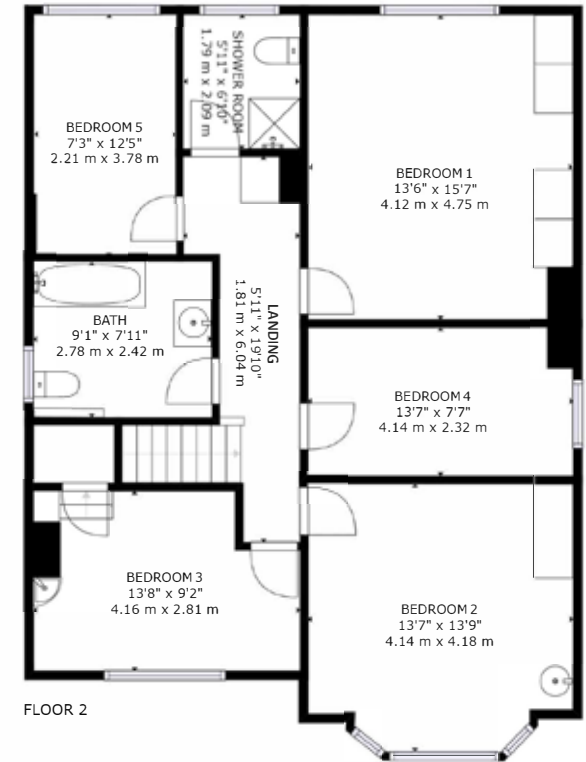
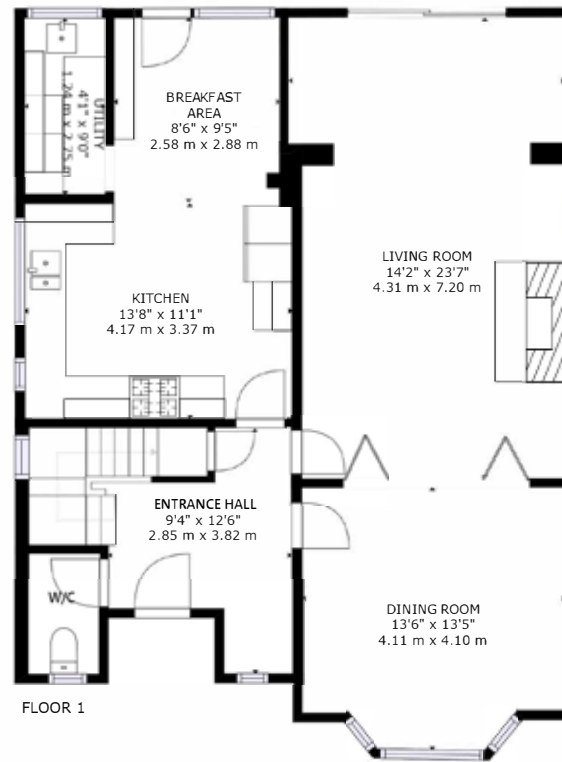




313 New Road
Ferndown, BH22 8EJ
ASKING PRICE £750,000

Winkworth



GROSS INTERNAL AREA
 FLOOR 1: 1019 sq. ft, 95 m², FLOOR 2: 1039 sq. ft, 97 m²
 TOTAL: 2057 sq. ft, 191 m²
 SIZES AND DIMENSIONS ARE APPROXIMATE, ACTUAL MAY VARY.





ASKING PRICE - £750,000

01202 434365 | ferndown@winkworth.co.uk

Detached, character house positioned on a large mature south facing plot.

A very rare opportunity to purchase this imposing, character filled five bedroom detached house positioned on a south facing plot in excess of 0.4 of an acre. This property is ideal for those wanting to put their mark on a property, which has an abundance of potential to extend and improve into a wonderful forever home.

- Five Bedrooms
- Central Ferndown Location
- Lots Of Off-Road Parking
- One Bathroom & One Shower room
- No Onward Chain
- Detached
- Vast potential to extend and improve
- Detached Garage
- Freehold
- Large mature and tranquil garden
- 37ft openplan entertaining space
- EPC Rating D





LOCATION

Just a short walk from Ferndown town centre, which has a range of shops, cafes and amenities including an M&S Food hall and Ferndown championship golf course. There are bus routes within a short walk giving you easy access to Bournemouth & Poole, both of which have an excellent range of shops, bars, restaurants and leisure facilities as well as award winning sandy beaches. The nearby A31 provides quick access to the New Forest, Southampton and beyond for the commuter by car.

Winkworth Ferndown

406 Ringwood Road, Ferndown, Dorset, BH22 9AU

01202 434365 | ferndown@winkworth.co.uk

winkworth.co.uk/ferndown

Winkworth