



7 MCKENZIE COURT

NEWBURY RG14 1TZ

A top floor, two bedroom apartment with Juliette balcony on the sought after College Mews Development.

The flat is bright and airy and well presented.

The accommodation comprises an open plan kitchen/ sitting room with dining area and Juliette balcony, perfect for throwing the doors open on a summers day. The kitchen area has fully integrated appliances.

There are two double bedrooms, both with integrated wardrobes and the main bedroom has an ensuite shower room.

A family bathroom completes the accommodation along with a good sized storage cupboard in the hall.

The property has one allocated parking space.



Winkworth

AT A GLANCE

613 Square feet/ 57 Square metres

Two double bedrooms

Two bath/shower rooms

Sitting/dining room

Kitchen with appliances

Electric heating

Double glazing

One parking space

UTILITIES

Mains water, electricity and drainage.

West Berkshire Council Band C

EPC C

SITUATION

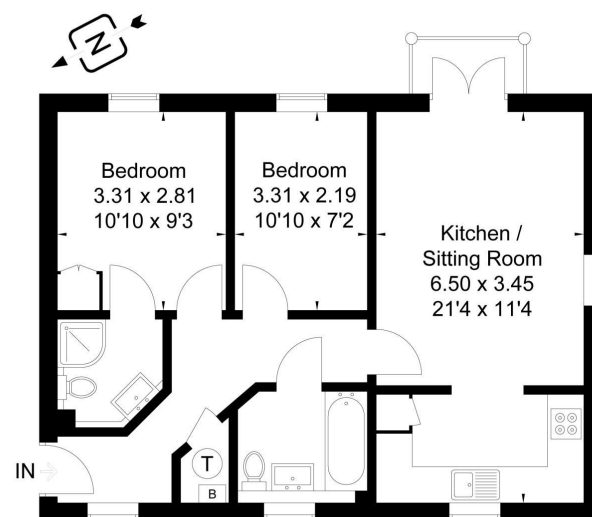
The property is situated on the popular College Mews development, just to the north of Newbury town centre and a stone's throw from Waitrose.

DIRECTIONS

For sat nav RG14 1TZ.

Mckenzie Court, Newbury, RG14

Approximate Gross Internal Area = 57 sq m / 613 sq ft



Second Floor



Newbury Office

43 Northbrook Street, Newbury, Berkshire RG14 1DT

01635 552552 | newbury@winkworth.co.uk

winkworth.co.uk/newbury

Winkworth

See things differently.