



**Abbey Walk, Romsey, Hampshire, SO51 8JQ**

**Winkworth**





## **STYLISH TWO BEDROOM APARTMENT**

**We are delighted to offer this beautifully presented two double bedroom apartment located within a short stroll of Romsey town centre. Occupying a fantastic position close to all the extensive amenities this market town has to offer, including Waitrose, Library, coffee shops, restaurants, bars, Doctors Surgery's, Dentists, some stunning walks and Romsey Abbey. The cathedral cities of Winchester and Salisbury are within easy commute. In addition, there are good motorway and rail links to London and beyond.**

**This spacious second floor apartment is well arranged and very well presented. Offering light and airy accommodation comprising a welcoming entrance hall, an open plan living room with dining area and a modern, well fitted kitchen with plenty of eye and base unit cupboards. A special feature of this wonderful property are the stunning views from the living room over Romsey Abbey. There are two large double bedrooms one of which benefits from an en-suite shower room the main bathroom is fitted with shower over bath. The property benefits from lift access. Viewing is strongly recommended to appreciate the size and location of this lovely property.**





# Winkworth

Address: **Abbey Walk, Romsey SO51 8JQ**

Council Tax: **Band 'B'**



Denotes restricted head height



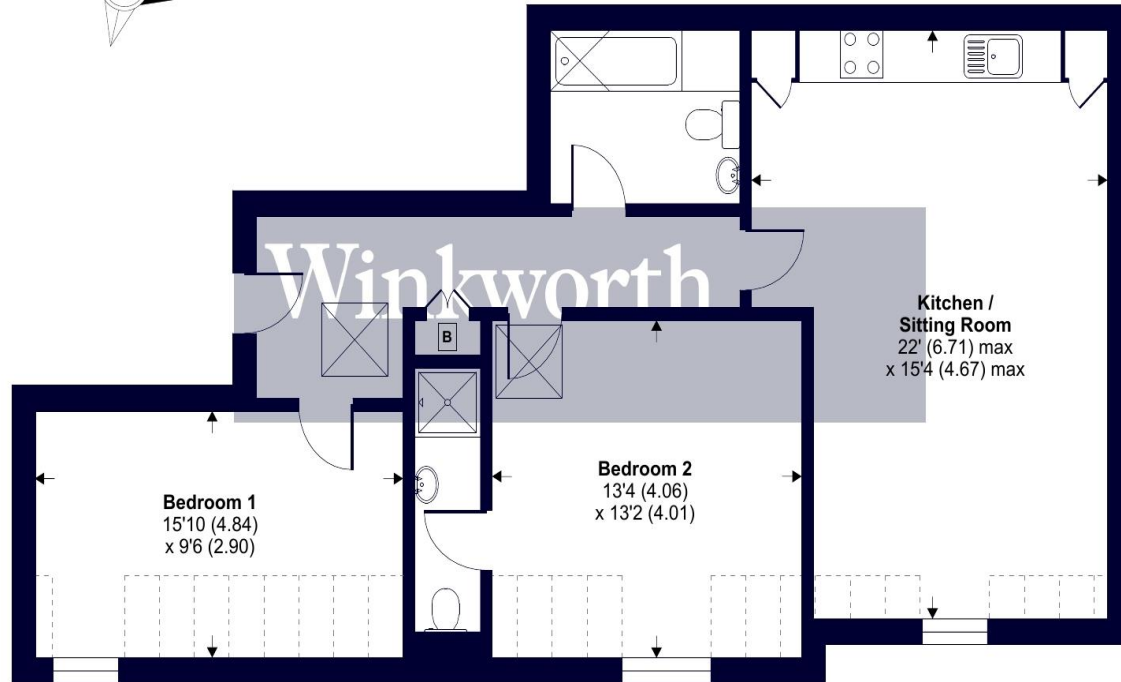
## Church Street, Romsey, SO51

Approximate Area = 768 sq ft / 71.3 sq m

Limited Use Area(s) = 82 sq ft / 7.6 sq m

Total = 850 sq ft / 78.9 sq m

For identification only - Not to scale



SECOND FLOOR



Floor plan produced in accordance with RICS Property Measurement Standards incorporating International Property Measurement Standards (IPMS2 Residential). © nctechcom 2022. Produced for Winkworth. REF: 810238

[winkworth.co.uk/romsey](http://winkworth.co.uk/romsey)

### Winkworth Romsey

18 Market Place, Romsey, Hampshire, SO51 8NA  
01794 511911 | [romsey@winkworth.co.uk](mailto:romsey@winkworth.co.uk)

[winkworth.co.uk/romsey](http://winkworth.co.uk/romsey)

### Winkworth Winchester

2 Black Swan Buildings, Southgate Street,  
Winchester, Hampshire, SO23 9DT  
01962 866777 | [winchester@winkworth.co.uk](mailto:winchester@winkworth.co.uk)

### Winkworth Mayfair & Country House Department

11 Berkeley Street, Mayfair, London, W1J 8DS  
020 7871 0589 | [countryhouse@winkworth.co.uk](mailto:countryhouse@winkworth.co.uk)

# Winkworth

See things differently