



**SLOANE APARTMENTS, 54 OLD CASTLE STREET, ALDGATE, E1
£825 PER WEEK FURNISHED**

**FANTASTIC THREE BEDROOM APARTMENT
WITH PRIVATE BALCONY, COMMUNAL
TERRACE AND GYM.**

Shoreditch | 020 7749 7650 | shoreditch@winkworth.co.uk

Tenant Fees Apply: Details of fees for tenant referencing, tenancy agreement admin fees and renewal fees are available on the Winkworth website and the link can be found with the displayed rent for the property. Tenants should ensure they are fully conversant with these upfront fees and other costs that are involved at the outset of the tenancy before making an offer to rent and your local Winkworth office will provide written details upon request.



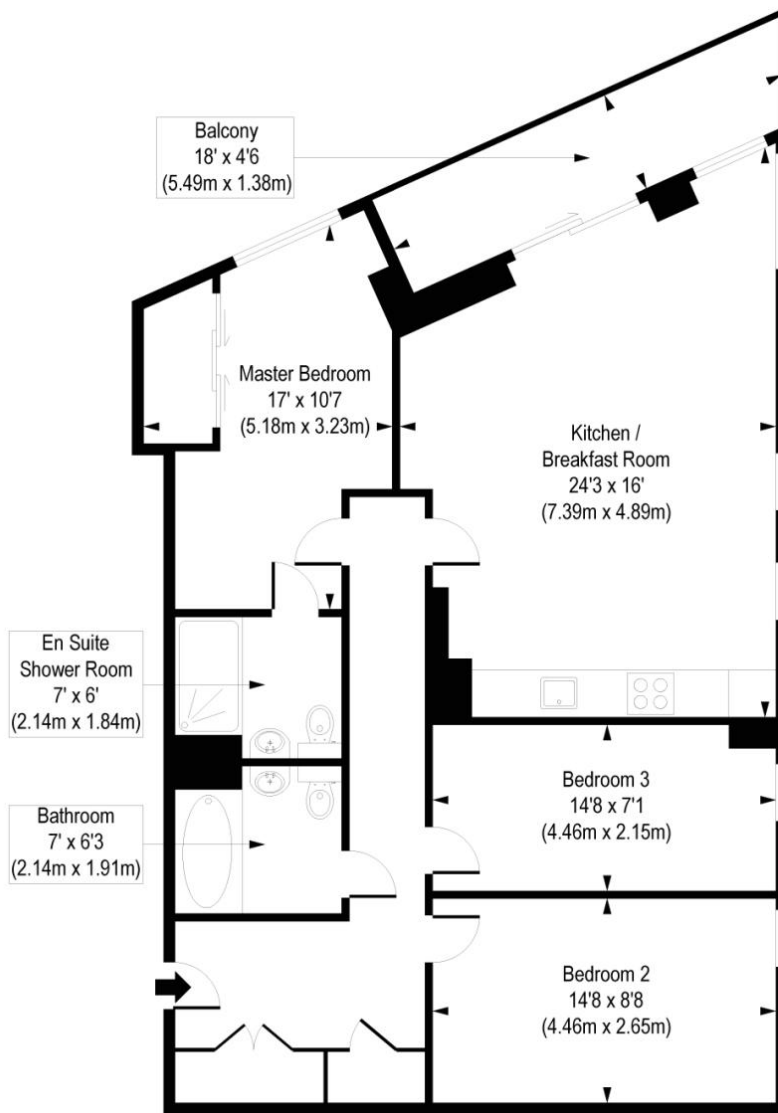
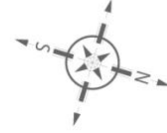
DESCRIPTION:

A large three double bedroom apartment in this exclusive new development with concierge and gym, a short walk from Spitalfields Market and fashionable Shoreditch, in this amazing Zone 1 location. The apartment has been finished to the highest specification with contemporary porcelain and glass tiling in the bathrooms, quality engineered oak effect floors and stone worktops in the luxury kitchen fitted out with Siemens appliances. The living room benefits from floor to ceiling windows and private balcony. Two bathrooms, including one en-suite. Under floor heating and secure entry system. The building has secure bicycle storage and 24hr concierge, gym and impressive communal roof terrace. Available now.



Sloane Apartments, E1

Approx. Gross Internal Area 945 sq. ft / 87.79 sq. m



Third Floor

COMPLIANT WITH RICS CODE OF MEASURING PRACTICE. Floorplan is for illustrative purposes only and is not to scale. Every attempt has been made to ensure the accuracy of the floorplan shown, however all measurements, fixtures, fittings and data shown are an approximate interpretation for illustrative purposes only. Liability for errors, omissions or mis-statement through negligence or otherwise is hereby excluded.

This floorplan is for illustration purposes only and is not to scale. The position and size of doors, windows, appliances and other features are approximate.