



Granville Mansions, Shepherds Bush Green, W12

£600,000 Share of Freehold

An extremely spacious two double bedroom flat on the lower ground floor of an imposing red brick Edwardian mansion block.

Reception Room | Kitchen | 2 Bedrooms | Bathroom | 924 Sq Ft / 86 Sq M | Council Tax Band D |
EPC Rating Band D

Winkworth

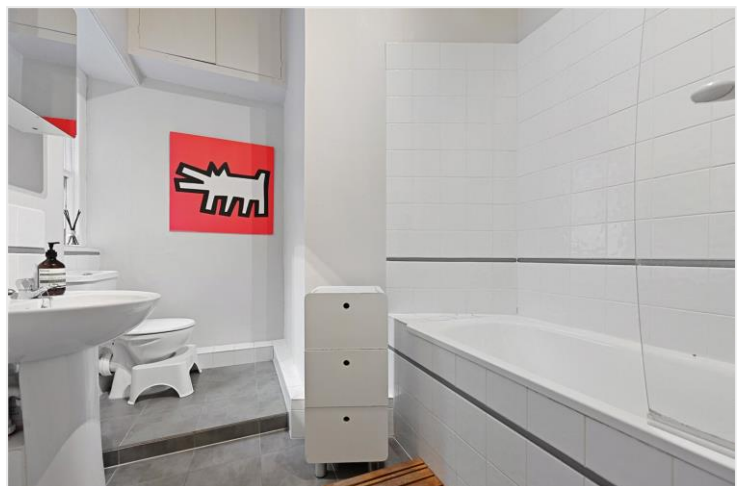


LOCATION

Granville Mansions is located on the corner of Shepherd's Bush Road and Shepherd's Bush Green, with easy access to additional open spaces at Brook Green, as well as Ravenscourt Park and Holland Park. The amenities of Westfield London, Soho House White City and the cafes and restaurants of Brook Green are also close to hand. The location is ideal for access to transport links from Shepherd's Bush, Hammersmith and Goldhawk Road stations, as well as the M4 and M40.

DESCRIPTION

The property offers extremely spacious accommodation totalling in excess of 920 sq ft (86 sq m) and comprising entrance hall, reception room with period fireplace and solid oak parquet flooring; two double bedrooms, kitchen and bathroom.

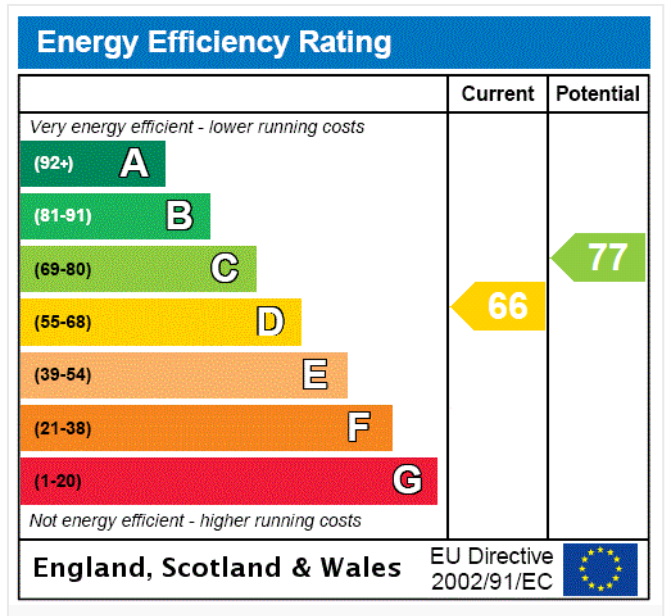


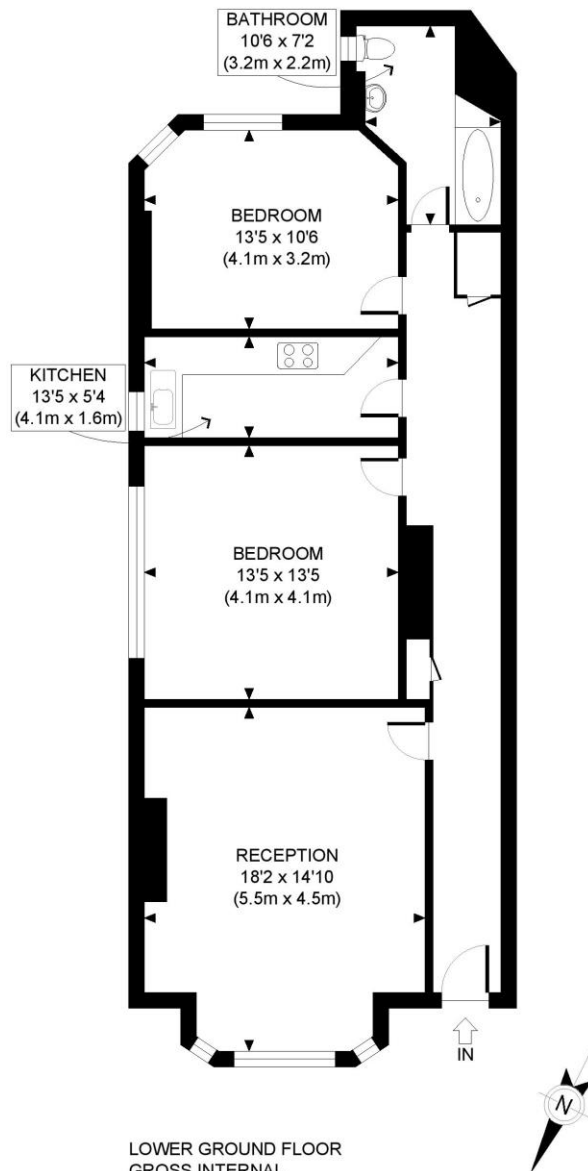


LOCAL AUTHORITY
Hammersmith & Fulham

TENURE
Share of Freehold.

PRICE: £600,000 Share of Freehold





LOWER GROUND FLOOR
GROSS INTERNAL
FLOOR AREA 924 SQ FT

APPROX. GROSS INTERNAL FLOOR AREA: 924 SQ FT/ 86 SQM

PROPERTY PHOTO PLANS.CO.UK
ONE STOP SHOP FOR PROPERTY MARKETING

This plan is for illustrative purposes only and should be used as such by any prospective client. Whilst every attempt has been made to ensure the accuracy of the Floor Plan contained here, measurements of the doors, windows, rooms and any other items are approximate and no responsibility is taken for any errors, omissions, or misstatement. The services, systems and appliances shown have not been tested and no guarantee as to the operability or efficiency can be given.

The displayed square footage is taken from the floor plans with measurements created using the Royal Institute of Chartered Surveyors' Code of Practice for Measuring. These measurements are approximate and included for illustrative purposes only. Winkworth does not make any representation as to the accuracy of these measurements and you should seek to verify them for yourself. Winkworth accept no liability for any loss you may suffer if you rely on these measurements.

Hammersmith | 0207 371 4466 | hammersmith@winkworth.co.uk

Winkworth

for every step...

Under the Property Misdescriptions Act 1991, these Particulars are a guide and act as information only. All details are given in good faith and are believed to be correct at time of printing. Winkworth give no representation as to their accuracy and potential purchasers or tenants must satisfy themselves by inspection or otherwise as to their correctness. No employee of Winkworth has authority to make or give any representation or warranty in relation to this property.