



CHEPSTOW ROAD, W2

£450 PER WEEK (£1,950 PCM) Unfurnished

AN IMMACULATE AND VERY BRIGHT ONE BEDROOM FLAT ON THE FIRST FLOOR OF THIS PERIOD BUILDING.

**Long Let, 1 Bedrooms, 1 Reception Rooms, 1 Bathrooms,
Flat/Apartment, First Floor, Part Furnished**

Winkworth

Notting Hill | 020 77273227 | nottinghill@winkworth.co.uk

winkworth.co.uk

See things differently



DESCRIPTION:

An immaculate and very bright one bedroom flat on the first floor of this period building. Property comprises: living room with floor to ceiling windows leading out to an ornamental balcony, open plan fitted kitchen, double bedroom to the back of the building and modern bathroom. The property is offered on a part-furnished basis. Single professionals only please.

LOCATION:

Chepstow Road is an attractive, tree lined, residential street running north from Westbourne Grove, a short walk to all amenities of Westbourne Grove and Ledbury Road and within easy walking distance of the transport facilities at Notting Hill Gate.

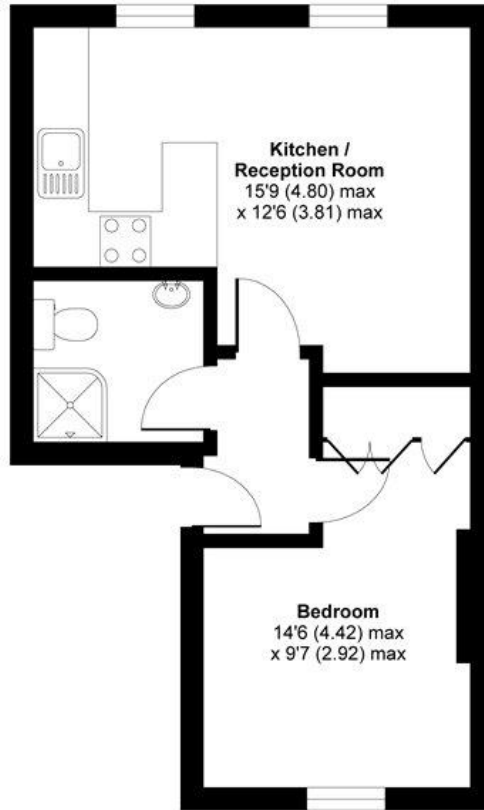
LOCAL AUTHORITY:

City of Westminster (Band B)



Chepstow Road, London, W2

APPROX. GROSS INTERNAL FLOOR AREA 358 SQ FT 33.3 SQ METRES

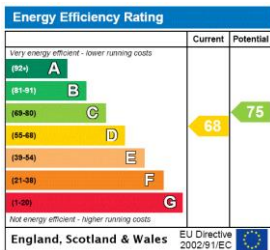


FIRST FLOOR

Whilst every attempt has been made to ensure the accuracy of the floor plan contained here, measurements of doors, windows and rooms are approximate and no responsibility is taken for any error, omission or misstatement. These plans are for representation purposes only as defined by RICS Code of Measuring Practice and should be used as such by any prospective purchaser. Specifically no guarantee is given on the total square footage of the property if quoted on this plan. Any figure given is for initial guidance only and should not be relied on as a basis of valuation.

Copyright nichecom.co.uk 2012 Produced for The Estate Company REF : 255532

This floorplan is for illustration purposes only and is not to scale. The position and size of doors, windows, appliances and other features are approximate.



Notting Hill | 020 77273227 | nottinghill@winkworth.co.uk



winkworth.co.uk

See things differently

winkworth wishes to inform prospective buyers and tenants that these particulars are a guide and act as information only. All our details are given in good faith and believed to be correct at the time of printing but they don't form part of an offer or contract. No Winkworth employee has authority to make or give any representation or warranty in relation to this property. All fixtures and fittings, whether fitted or not are deemed removable by the vendor unless stated otherwise and room sizes are measured between internal wall surfaces, including furnishings.