



Brent Court, Emlyn Gardens, Shepherd's Bush, W12

£385,000 Leasehold

A two double bedroom purpose flat with balcony located on this popular development nestled between Shepherds Bush and Chiswick.

Reception Room | Kitchen | 2 Bedrooms | Bathroom | Balcony | 708 Sq Ft / 66 Sq M | Council Tax Band C | EPC Rating Band C

Winkworth



LOCATION

Brent Court is located on Emlyn Gardens on the Chiswick/Shepherds Bush borders. Turnham Green (District Line) is the closest Underground station, whilst the A40/M40 is close by giving easy access in and out of London. The green spaces of both Wendell Park and Ravenscourt Park are only a short walk away.

DESCRIPTION

Offered in good order throughout, the property benefits from accommodation comprising entrance hall, cloakroom, two double bedrooms, bathroom, reception room and kitchen. The flat further benefits from a balcony and no onward chain.

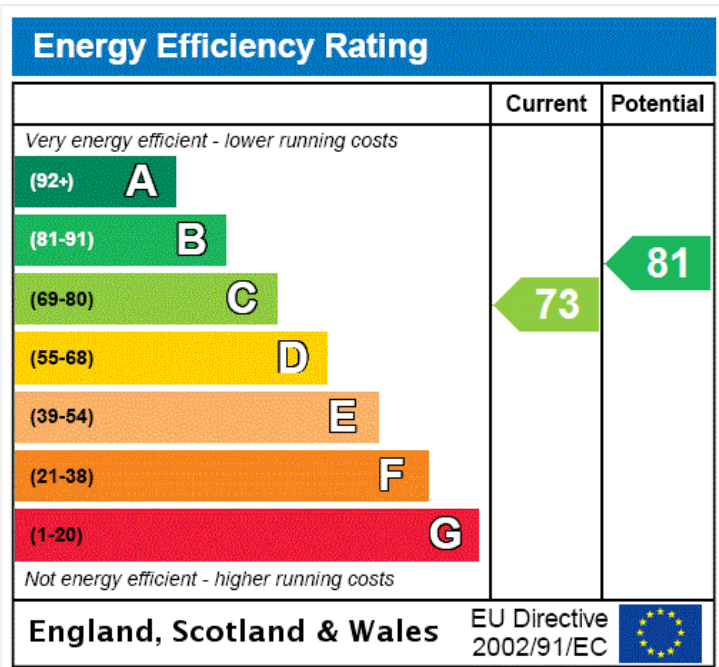


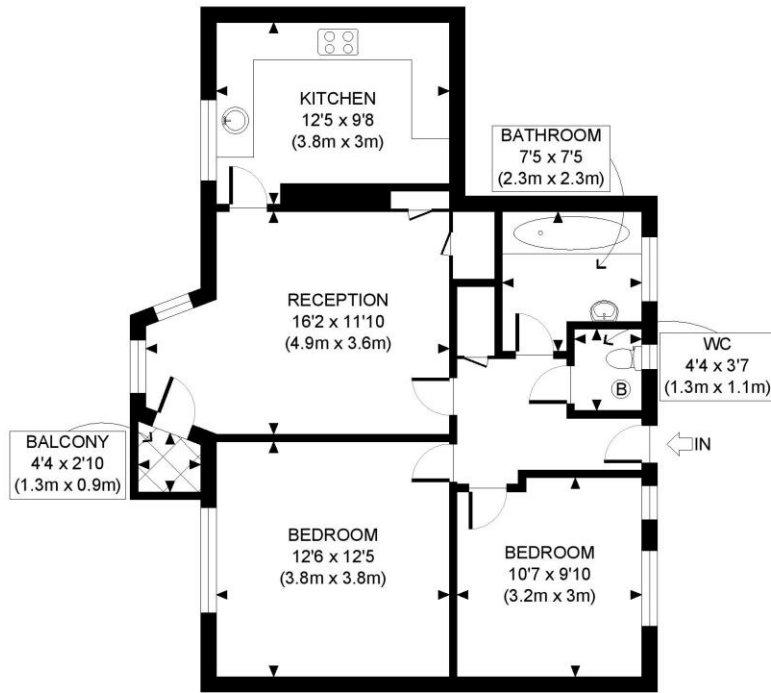


LOCAL AUTHORITY
London Borough of Hammersmith & Fulham

TENURE
Leasehold.

PRICE: £400,000 Leasehold





THIRD FLOOR
GROSS INTERNAL
FLOOR AREA 708 SQ FT



APPROX. GROSS INTERNAL FLOOR AREA: 708 SQ FT/ 66 SQM

PROPERTY PHOTO PLANS.CO.UK
ONE STOP SHOP FOR PROPERTY MARKETING

This plan is for illustrative purposes only and should be used as such by any prospective client. Whilst every attempt has been made to ensure the accuracy of the Floor Plan contained here, measurements of the doors, windows, rooms and any other items are approximate and no responsibility is taken for any errors, omissions, or misstatement. The services, systems and appliances shown have not been tested and no guarantee as to the operability or efficiency can be given.

The displayed square footage is taken from the floor plans with measurements created using the Royal Institute of Chartered Surveyors' Code of Practice for Measuring. These measurements are approximate and included for illustrative purposes only. Winkworth does not make any representation as to the accuracy of these measurements and you should seek to verify them for yourself. Winkworth accept no liability for any loss you may suffer if you rely on these measurements.

Shepherds Bush | 020 8735 3266 | shepherdsbush@winkworth.co.uk



for every step...

Under the Property Misdescriptions Act 1991, these Particulars are a guide and act as information only. All details are given in good faith and are believed to be correct at time of printing. Winkworth give no representation as to their accuracy and potential purchasers or tenants must satisfy themselves by inspection or otherwise as to their correctness. No employee of Winkworth has authority to make or give any representation or warranty in relation to this property.