



LOGAN MEWS, W8
£2,300,000 FREEHOLD

**A CHARMING THREE BEDROOM VICTORIAN TERRACED HOUSE
LOCATED IN A QUIET, PRIVATE COBBLED MEWS WITH A
DEDICATED PARKING SPACE AND A LARGE ROOF TERRACE.**

Kensington | 020 7727 1500 | kensington@winkworth.co.uk

Winkworth

for every step...

winkworth.co.uk



DESCRIPTION:

A charming three bedroom Victorian terraced house located in a quiet, private cobbled mews with a dedicated parking space and a large roof terrace. The ground floor of this bright mews house has a south facing reception room, separate dining room and a well-equipped modern kitchen. The three double bedrooms are situated on the first floor with an en suite shower room and a family bathroom. There are stairs up to the sunroom which leads onto the large roof terrace. Residents of Logan Mews benefit from private parking outside their home.

Logan Place is located to the south of Kensington High Street with its many excellent shops, restaurants and transport facilities. The green open spaces of Holland Park are also within easy walking distance.

ACCOMODATION:

Reception Room | Dining Room | Kitchen/Breakfast Room | Sunroom | Principal Bedroom with En suite Shower Room | Two Further Double Bedrooms | Bathroom | Roof Terrace | Private Parking

LOCAL AUTHORITY:

The Royal Borough of Kensington & Chelsea

NEAREST PUBLIC TRANSPORT:

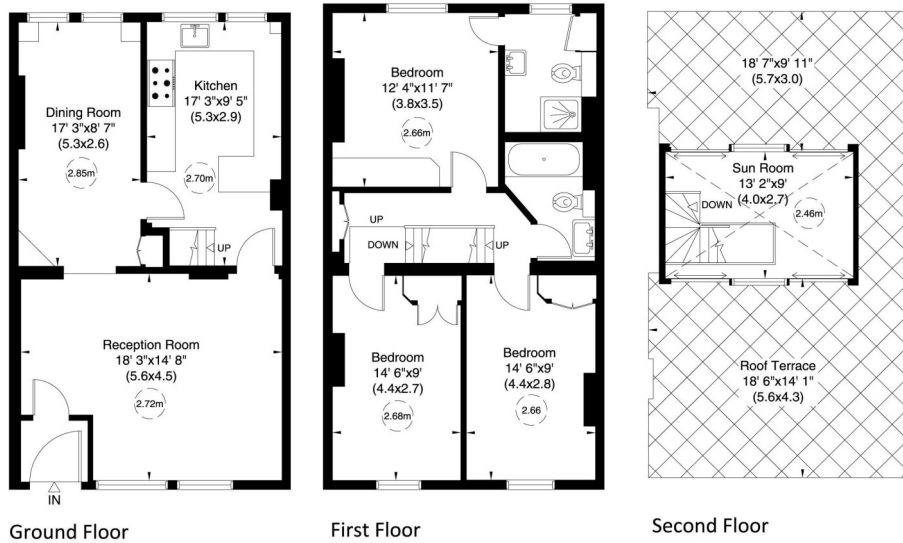
Kensington High Street
Earls Court Road



Logan Mews, W8

Approximate Gross Internal Area = 123 sq m/ 1323 sq ft

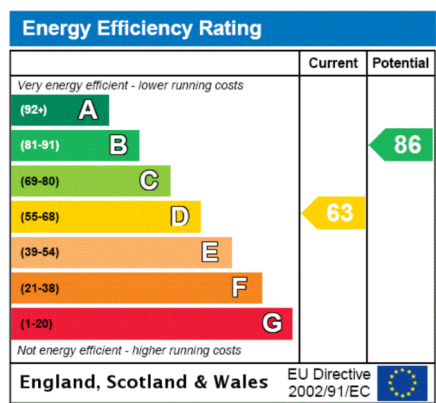
Not to Scale, for identification only



For guidance only and must not be relied upon as a statement of fact. All measurements and areas are approximate only (and have been prepared in accordance with the current edition of the RICS Code of Measuring Practice).



This floorplan is for illustration purposes only and is not to scale. The position and size of doors, windows, appliances and other features are approximate.



Tenure: Freehold
Council tax band: G

Kensington | 020 7727 1500 | kensington@winkworth.co.uk



for every step...

winkworth.co.uk

Winkworth wishes to inform prospective buyers and tenants that these particulars are a guide and act as information only. All our details are given in good faith and believed to be correct at the time of printing but they don't form part of an offer or contract. No Winkworth employee has authority to make or give any representation or warranty in relation to this property. All fixtures and fittings, whether fitted or not are deemed removable by the vendor unless stated otherwise and room sizes are measured between internal wall surfaces, including furnishings.